

## Product datasheet for **TA322200**

### ABCG5 Rabbit Polyclonal Antibody

#### Product data:

Product Type:	Primary Antibodies
Applications:	IHC
Recommended Dilution:	IHC: 25-100 Positive control: Human liver cancer Predicted cell location: Cytoplasm
Reactivity:	Human
Host:	Rabbit
Isotype:	IgG
Clonality:	Polyclonal
Immunogen:	Synthetic peptide corresponding to a region derived from 18-30 amino acids of human ATP-binding cassette, sub-family G (WHITE), member 5
Formulation:	PBS pH7.3, 0.05% NaN <sub>3</sub> , 50% glycerol
Concentration:	lot specific
Purification:	Antigen affinity purification
Conjugation:	Unconjugated
Storage:	Store at -20°C as received.
Stability:	Stable for 12 months from date of receipt.
Gene Name:	ATP binding cassette subfamily G member 5
Database Link:	<a href="#">NP_071881</a> <a href="#">Entrez Gene 64240 Human</a> <a href="#">Q9H222</a>



[View online »](#)

**Background:**

The protein encoded by this gene is a member of the superfamily of ATP-binding cassette (ABC) transporters. ABC proteins transport various molecules across extra- and intra-cellular membranes. ABC genes are divided into seven distinct subfamilies (ABC1; MDR/TAP; MRP; ALD; OABP; GCN20; White). This protein is a member of the White subfamily. The protein encoded by this gene functions as a half-transporter to limit intestinal absorption and promote biliary excretion of sterols. It is expressed in a tissue-specific manner in the liver; colon; and intestine. This gene is tandemly arrayed on chromosome 2; in a head-to-head orientation with family member ABCG8. Mutations in this gene may contribute to sterol accumulation and atherosclerosis; and have been observed in patients with sitosterolemia.

**Synonyms:**

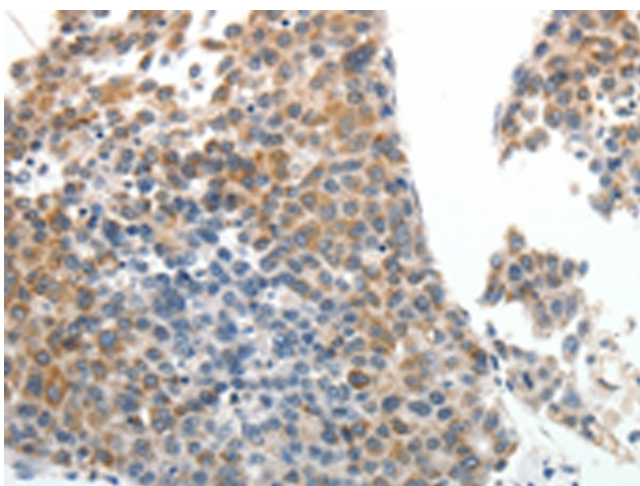
STSL

**Protein Families:**

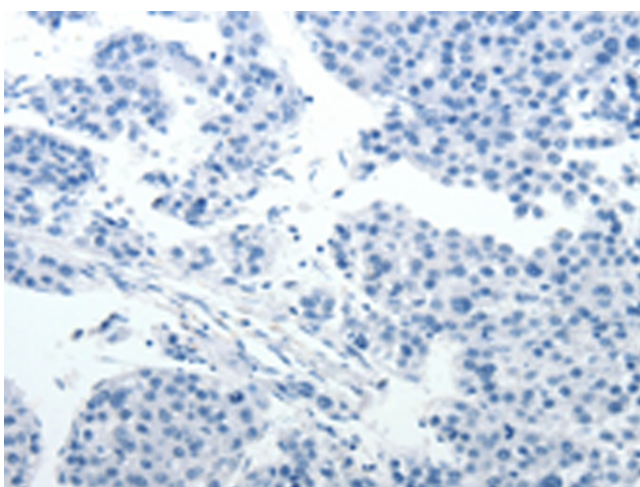
Druggable Genome, Transmembrane

**Protein Pathways:**

ABC transporters

**Product images:**


Immunohistochemistry of paraffin-embedded Human liver cancer tissue using TA322200 (ABCG5 Antibody) at dilution 1/20 (Original magnification: ×200)



Immunohistochemistry of paraffin-embedded Human liver cancer tissue using TA322200 (ABCG5 Antibody) at dilution 1/20, treated with synthetic peptide. (Original magnification: ×200)