

Product datasheet for **TA322199S**

MMP25 Rabbit Polyclonal Antibody

Product data:

Product Type:	Primary Antibodies
Applications:	IHC, WB
Recommended Dilution:	WB: 500-2000 WB positive control: 823 cells IHC: 50-200 Positive control: Human lung cancer Predicted cell location: Cytoplasm
Reactivity:	Human
Host:	Rabbit
Isotype:	IgG
Clonality:	Polyclonal
Immunogen:	Synthetic peptide corresponding to a region derived from 126-139 amino acids of human matrix metalloproteinase 25
Formulation:	PBS pH7.3, 0.05% NaN ₃ , 50% glycerol
Purification:	Antigen affinity purification
Conjugation:	Unconjugated
Storage:	Store at -20°C as received.
Stability:	Stable for 12 months from date of receipt.
Predicted Protein Size:	63 kDa
Gene Name:	matrix metalloproteinase 25
Database Link:	NP_071913 Entrez Gene 64386 Human Q9NPA2



[View online »](#)

Background:

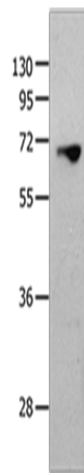
Proteins of the matrix metalloproteinase (MMP) family are involved in the breakdown of extracellular matrix in normal physiological processes; such as embryonic development; reproduction; and tissue remodeling; as well as in disease processes; such as arthritis and metastasis. Most MMPs are secreted as inactive proproteins which are activated when cleaved by extracellular proteinases. However; the protein encoded by this gene is a member of the membrane-type MMP (MT-MMP) subfamily; attached to the plasma membrane via a glycosylphosphatidyl inositol anchor. In response to bacterial infection or inflammation; the encoded protein is thought to inactivate alpha-1 proteinase inhibitor; a major tissue protectant against proteolytic enzymes released by activated neutrophils; facilitating the transendothelial migration of neutrophils to inflammatory sites. The encoded protein may also play a role in tumor invasion and metastasis through activation of MMP2. The gene has previously been referred to as MMP20 but has been renamed MMP25.

Synonyms:

MMP-25; MMP20; MMP20A; MMPL1; MT-MMP 6; MT-MMP6; MT6-MMP; MT6MMP; MTMMP6

Protein Families:

Druggable Genome

Product images:

Gel: 10+12%SDS-PAGE

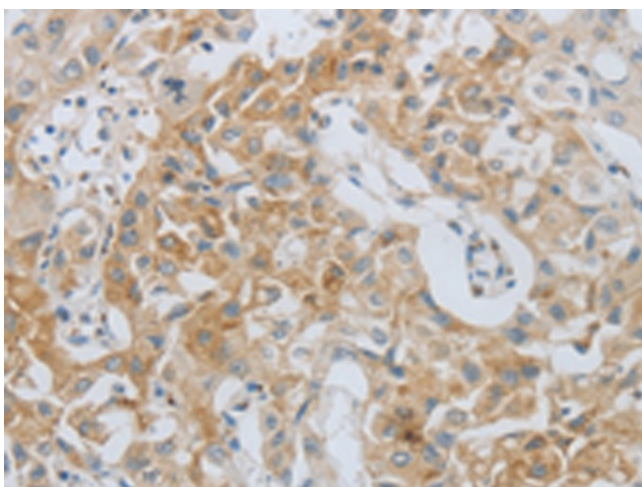
Lysate: 40 µg

Lane: 823 cells

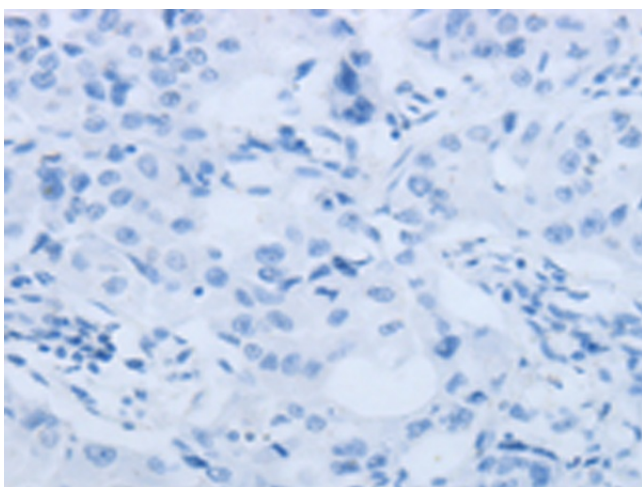
Primary antibody: [TA322199] (MMP25 Antibody)
at dilution 1/1300

Secondary antibody: Goat anti rabbit IgG at
1/8000 dilution

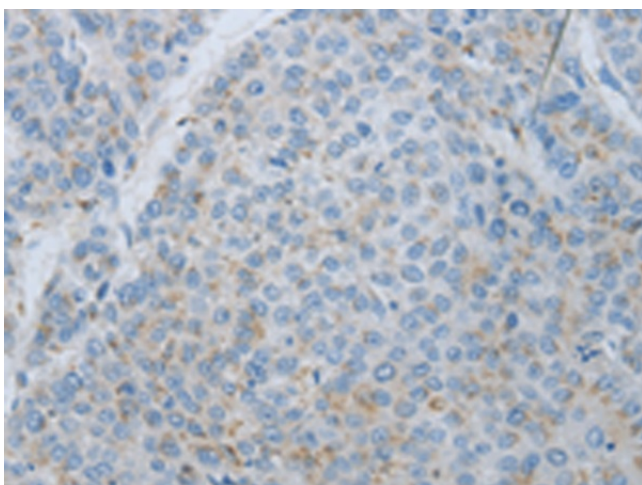
Exposure time: 2 minutes



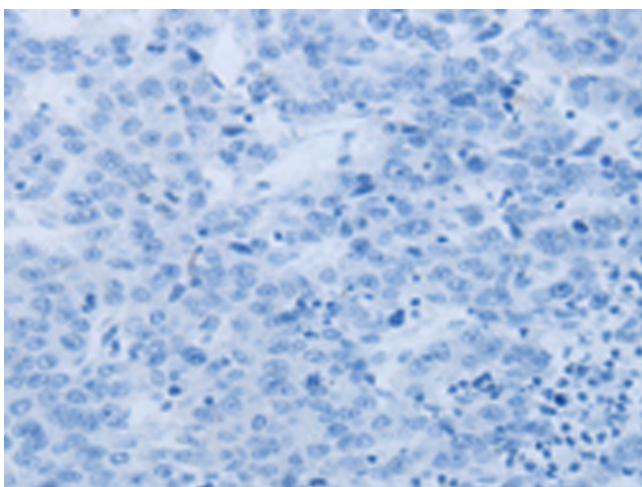
Immunohistochemistry of paraffin-embedded Human lung cancer tissue using [TA322199] (MMP25 Antibody) at dilution 1/80 (Original magnification: $\times 200$)



Immunohistochemistry of paraffin-embedded Human lung cancer tissue using [TA322199] (MMP25 Antibody) at dilution 1/80, treated with synthetic peptide. (Original magnification: $\times 200$)



Immunohistochemistry of paraffin-embedded Human liver cancer tissue using [TA322199] (MMP25 Antibody) at dilution 1/80 (Original magnification: $\times 200$)



Immunohistochemistry of paraffin-embedded Human liver cancer tissue using [TA322199] (MMP25 Antibody) at dilution 1/80, treated with synthetic peptide. (Original magnification: ×200)