

## Product datasheet for **TA322198**

### MMP25 Rabbit Polyclonal Antibody

#### Product data:

Product Type:	Primary Antibodies
Applications:	IHC
Recommended Dilution:	IHC: 50-200 Positive control: Human brain Predicted cell location: Cytoplasm
Reactivity:	Human
Host:	Rabbit
Isotype:	IgG
Clonality:	Polyclonal
Immunogen:	Synthetic peptide corresponding to a region derived from 126-139 amino acids of human matrix metalloproteinase 25
Formulation:	PBS pH7.3, 0.05% NaN <sub>3</sub> , 50% glycerol
Concentration:	lot specific
Purification:	Antigen affinity purification
Conjugation:	Unconjugated
Storage:	Store at -20°C as received.
Stability:	Stable for 12 months from date of receipt.
Gene Name:	matrix metalloproteinase 25
Database Link:	<a href="#">NP_071913</a> <a href="#">Entrez Gene 64386 Human</a> <a href="#">Q9NPA2</a>



[View online »](#)

**Background:**

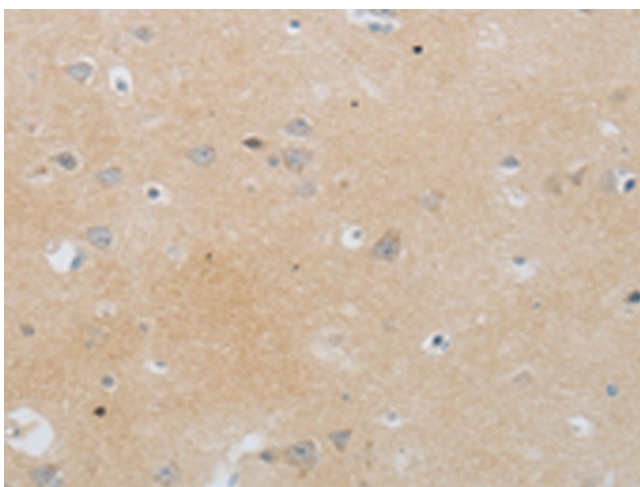
Proteins of the matrix metalloproteinase (MMP) family are involved in the breakdown of extracellular matrix in normal physiological processes; such as embryonic development; reproduction; and tissue remodeling; as well as in disease processes; such as arthritis and metastasis. Most MMPs are secreted as inactive proproteins which are activated when cleaved by extracellular proteinases. However; the protein encoded by this gene is a member of the membrane-type MMP (MT-MMP) subfamily; attached to the plasma membrane via a glycosylphosphatidyl inositol anchor. In response to bacterial infection or inflammation; the encoded protein is thought to inactivate alpha-1 proteinase inhibitor; a major tissue protectant against proteolytic enzymes released by activated neutrophils; facilitating the transendothelial migration of neutrophils to inflammatory sites. The encoded protein may also play a role in tumor invasion and metastasis through activation of MMP2. The gene has previously been referred to as MMP20 but has been renamed MMP25.

**Synonyms:**

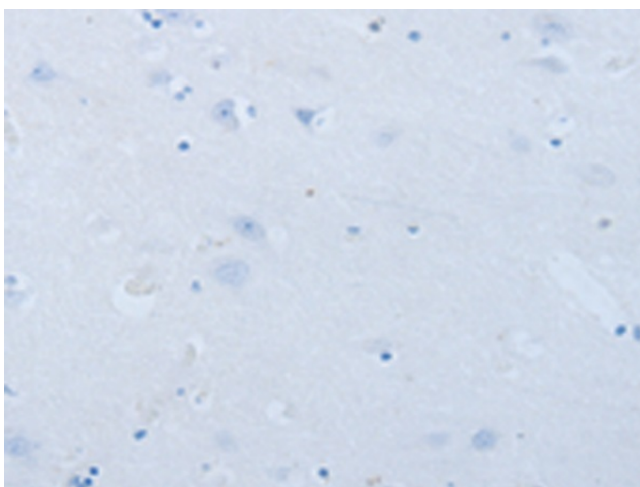
MMP-25; MMP20; MMP20A; MMPL1; MT-MMP 6; MT-MMP6; MT6-MMP; MT6MMP; MTMMP6

**Protein Families:**

Druggable Genome

**Product images:**

Immunohistochemistry of paraffin-embedded Human brain tissue using TA322198 (MMP25 Antibody) at dilution 1/80 (Original magnification: ×200)



Immunohistochemistry of paraffin-embedded Human brain tissue using TA322198 (MMP25 Antibody) at dilution 1/80, treated with synthetic peptide. (Original magnification:  $\times 200$ )