

Product datasheet for **TA322193S**

FANCF Rabbit Polyclonal Antibody

Product data:

Product Type:	Primary Antibodies
Applications:	IHC
Recommended Dilution:	IHC: 50-100 Positive control: Human esophagus cancer Predicted cell location: Cytoplasm
Reactivity:	Human
Host:	Rabbit
Isotype:	IgG
Clonality:	Polyclonal
Immunogen:	Full length fusion protein
Formulation:	PBS pH7.3, 0.05% NaN ₃ , 50% glycerol
Purification:	Antigen affinity purification
Conjugation:	Unconjugated
Storage:	Store at -20°C as received.
Stability:	Stable for 12 months from date of receipt.
Gene Name:	Fanconi anemia complementation group F
Database Link:	NP_073562 Entrez Gene 2188 Human Q9NPI8

Background: The Fanconi anemia complementation group (FANCF) currently includes FANCA; FANCB; FANCC; FANCD1 (also called BRCA2); FANCD2; FANCE; FANCF; FANCG; FANCI; FANCI (also called BRIP1); FANCL; FANCM and FANCN (also called PALB2). The previously defined group FANCH is the same as FANCA. Fanconi anemia is a genetically heterogeneous recessive disorder characterized by cytogenetic instability; hypersensitivity to DNA crosslinking agents; increased chromosomal breakage; and defective DNA repair. The members of the Fanconi anemia complementation group do not share sequence similarity; they are related by their assembly into a common nuclear protein complex. This gene encodes the protein for complementation group F.

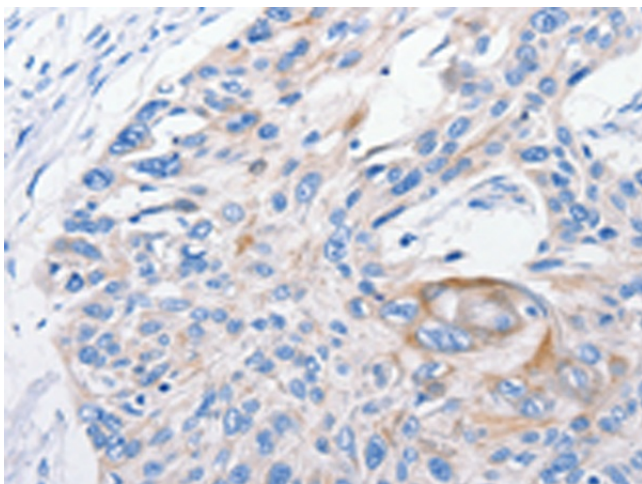


[View online »](#)

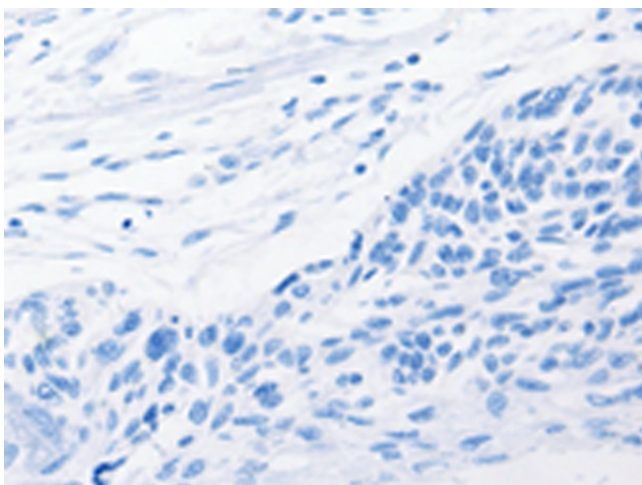
Synonyms: FAF

Protein Families: Druggable Genome

Product images:



Immunohistochemistry of paraffin-embedded Human esophagus cancer tissue using [TA322193] (FANCF Antibody) at dilution 1/100 (Original magnification: $\times 200$)



Immunohistochemistry of paraffin-embedded Human esophagus cancer tissue using [TA322193] (FANCF Antibody) at dilution 1/100, treated with fusion protein. (Original magnification: $\times 200$)