

## Product datasheet for **TA322193**

### FANCF Rabbit Polyclonal Antibody

#### Product data:

Product Type:	Primary Antibodies
Applications:	IHC
Recommended Dilution:	IHC: 50-100 Positive control: Human esophagus cancer Predicted cell location: Cytoplasm
Reactivity:	Human
Host:	Rabbit
Isotype:	IgG
Clonality:	Polyclonal
Immunogen:	Full length fusion protein
Formulation:	PBS pH7.3, 0.05% NaN <sub>3</sub> , 50% glycerol
Concentration:	lot specific
Purification:	Antigen affinity purification
Conjugation:	Unconjugated
Storage:	Store at -20°C as received.
Stability:	Stable for 12 months from date of receipt.
Gene Name:	Fanconi anemia complementation group F
Database Link:	<a href="#">NP_073562</a> <a href="#">Entrez Gene 2188 Human</a> <a href="#">Q9NPI8</a>



[View online »](#)

**Background:**

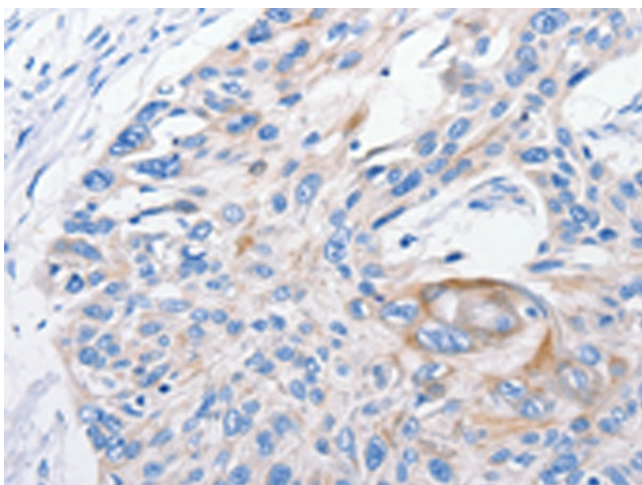
The Fanconi anemia complementation group (FANC) currently includes FANCA; FANCB; FANCC; FANCD1 (also called BRCA2); FANCD2; FANCE; FANCF; FANCG; FANCI; FANCI (also called BRIP1); FANCL; FANCM and FANCN (also called PALB2). The previously defined group FANCH is the same as FANCA. Fanconi anemia is a genetically heterogeneous recessive disorder characterized by cytogenetic instability; hypersensitivity to DNA crosslinking agents; increased chromosomal breakage; and defective DNA repair. The members of the Fanconi anemia complementation group do not share sequence similarity; they are related by their assembly into a common nuclear protein complex. This gene encodes the protein for complementation group F.

**Synonyms:**

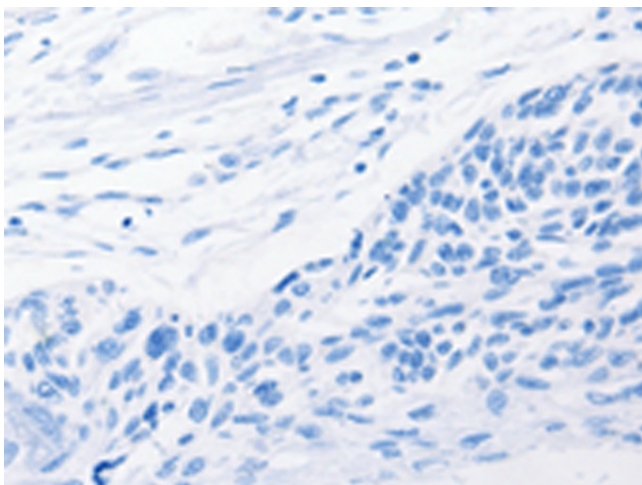
FAF

**Protein Families:**

Druggable Genome

**Product images:**

Immunohistochemistry of paraffin-embedded Human esophagus cancer tissue using TA322193 (FANCF Antibody) at dilution 1/100 (Original magnification: x200)



Immunohistochemistry of paraffin-embedded Human esophagus cancer tissue using TA322193 (FANCF Antibody) at dilution 1/100, treated with fusion protein. (Original magnification: x200)