

## Product datasheet for **TA322192S**

### FOXL2 Rabbit Polyclonal Antibody

#### Product data:

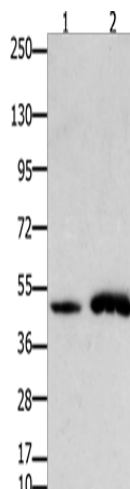
Product Type:	Primary Antibodies
Applications:	WB
Recommended Dilution:	WB: 500-2000 WB positive control: Mouse brain and heart tissue
Reactivity:	Human, Mouse
Host:	Rabbit
Isotype:	IgG
Clonality:	Polyclonal
Immunogen:	Synthetic peptide corresponding to a region derived from 364-376 amino acids of Human forkhead box L2
Formulation:	PBS pH7.3, 0.05% NaN <sub>3</sub> , 50% glycerol
Purification:	Antigen affinity purification
Conjugation:	Unconjugated
Storage:	Store at -20°C as received.
Stability:	Stable for 12 months from date of receipt.
Predicted Protein Size:	50 kDa
Gene Name:	forkhead box L2
Database Link:	<a href="#">NP_075555</a> <a href="#">Entrez Gene 26927 Mouse</a> <a href="#">Entrez Gene 668 Human</a> <a href="#">P58012</a>
Background:	This gene encodes a forkhead transcription factor. The protein contains a fork-head DNA-binding domain and may play a role in ovarian development and function. Mutations in this gene are a cause of blepharophimosis syndrome and premature ovarian failure 3. Critical factor essential for ovary differentiation and maintenance; and repression of the genetic program for somatic testis determination. Prevents trans-differentiation of ovary to testis through transcriptional repression of the Sertoli cell-promoting gene SOX9. Activates SIRT1 transcription under cellular stress conditions. Activates transcription of OSR2.
Synonyms:	BPES; BPES1; PFRK; PINTO; POF3



[View online »](#)

Protein Families: Druggable Genome, Transcription Factors

### Product images:



Gel: 10%SDS-PAGE

Lysate: 40  $\mu$ g

Lane 1-2: Mouse brain tissue

Mouse heart tissue

Primary antibody: [TA322192] (FOXL2 Antibody)  
at dilution 1/750

Secondary antibody: Goat anti rabbit IgG at  
1/8000 dilution

Exposure time: 30 seconds