

Product datasheet for **TA322192**

FOXL2 Rabbit Polyclonal Antibody

Product data:

Product Type:	Primary Antibodies
Applications:	WB
Recommended Dilution:	WB: 500-2000 WB positive control: Mouse brain and heart tissue
Reactivity:	Human, Mouse
Host:	Rabbit
Isotype:	IgG
Clonality:	Polyclonal
Immunogen:	Synthetic peptide corresponding to a region derived from 364-376 amino acids of Human forkhead box L2
Formulation:	PBS pH7.3, 0.05% NaN ₃ , 50% glycerol
Concentration:	lot specific
Purification:	Antigen affinity purification
Conjugation:	Unconjugated
Storage:	Store at -20°C as received.
Stability:	Stable for 12 months from date of receipt.
Predicted Protein Size:	50 kDa
Gene Name:	forkhead box L2
Database Link:	NP_075555 Entrez Gene 26927 Mouse Entrez Gene 668 Human P58012

Background: This gene encodes a forkhead transcription factor. The protein contains a fork-head DNA-binding domain and may play a role in ovarian development and function. Mutations in this gene are a cause of blepharophimosis syndrome and premature ovarian failure 3. Critical factor essential for ovary differentiation and maintenance; and repression of the genetic program for somatic testis determination. Prevents trans-differentiation of ovary to testis through transcriptional repression of the Sertoli cell-promoting gene SOX9. Activates SIRT1 transcription under cellular stress conditions. Activates transcription of OSR2.

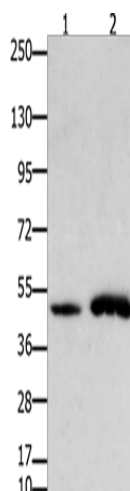


[View online »](#)

Synonyms: BPES; BPES1; PFRK; PINTO; POF3

Protein Families: Druggable Genome, Transcription Factors

Product images:



Gel: 10%SDS-PAGE

Lysate: 40 μ g

Lane 1-2: Mouse brain tissue

Mouse heart tissue

Primary antibody: TA322192 (FOXL2 Antibody) at dilution 1/750

Secondary antibody: Goat anti rabbit IgG at 1/8000 dilution

Exposure time: 30 seconds