

## Product datasheet for **TA322186**

### ALG12 Rabbit Polyclonal Antibody

#### Product data:

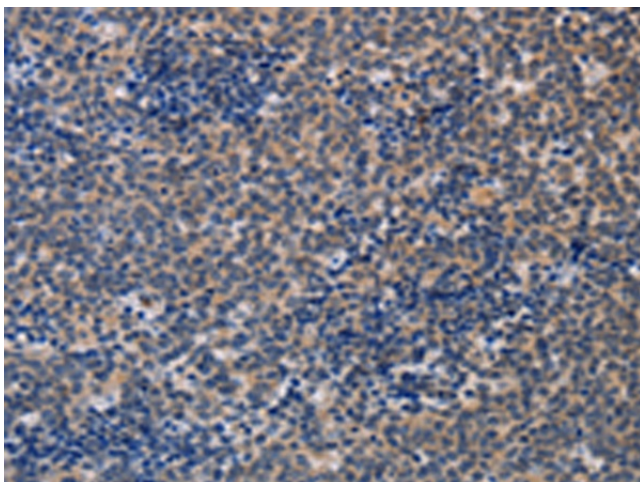
Product Type:	Primary Antibodies
Applications:	IHC
Recommended Dilution:	IHC: 25-100 Positive control: Human lymphoma Predicted cell location: Cytoplasm
Reactivity:	Human, Mouse
Host:	Rabbit
Isotype:	IgG
Clonality:	Polyclonal
Immunogen:	Fusion protein corresponding to a region derived from 367-488 amino acids of human ALG12, alpha-1,6-mannosyltransferase
Formulation:	PBS pH7.3, 0.05% NaN <sub>3</sub> , 50% glycerol
Concentration:	lot specific
Purification:	Antigen affinity purification
Conjugation:	Unconjugated
Storage:	Store at -20°C as received.
Stability:	Stable for 12 months from date of receipt.
Gene Name:	ALG12, alpha-1,6-mannosyltransferase
Database Link:	<a href="#">NP_077010</a> <a href="#">Entrez Gene 223774 Mouse</a> <a href="#">Entrez Gene 79087 Human</a> <a href="#">Q9BV10</a>
Background:	This gene encodes a member of the glycosyltransferase 22 family. The encoded protein catalyzes the addition of the eighth mannose residue in an alpha-1,6 linkage onto the dolichol-PP-oligosaccharide precursor (dolichol-PP-Man(7)GlcNAc(2)) required for protein glycosylation. Mutations in this gene have been associated with congenital disorder of glycosylation type Ig (CDG-Ig) characterized by abnormal N-glycosylation.
Synonyms:	CDG1G; ECM39; hALG12; PP14673
Protein Families:	Transmembrane



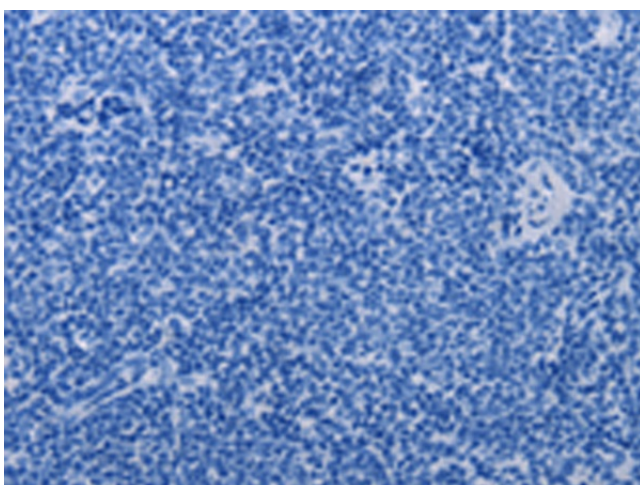
[View online »](#)

Protein Pathways: Metabolic pathways, N-Glycan biosynthesis

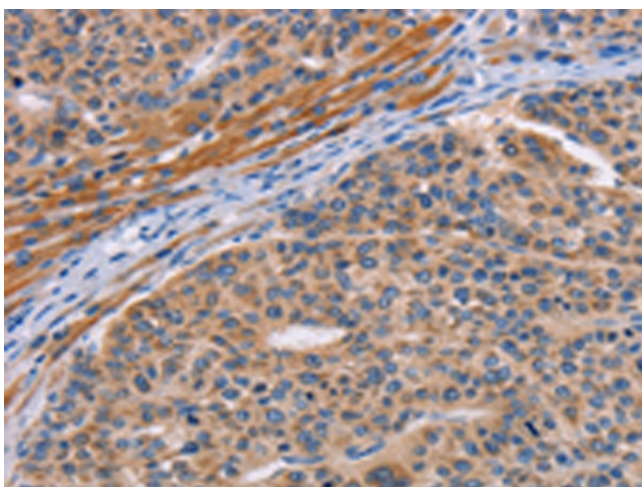
### Product images:



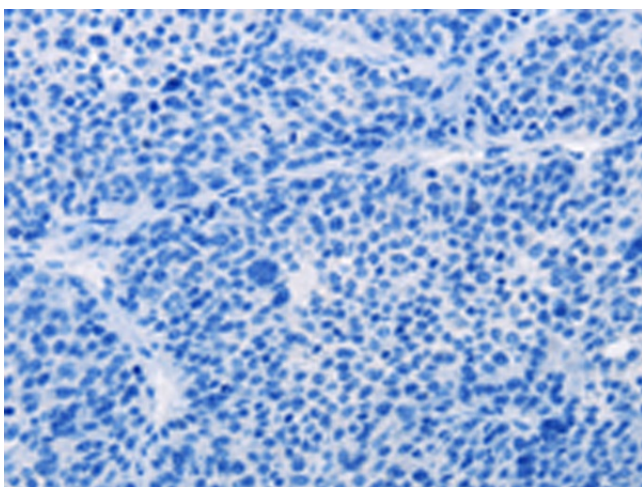
Immunohistochemistry of paraffin-embedded Human lymphoma tissue using TA322186 (ALG12 Antibody) at dilution 1/20 (Original magnification: ×200)



Immunohistochemistry of paraffin-embedded Human lymphoma tissue using TA322186 (ALG12 Antibody) at dilution 1/20, treated with fusion protein. (Original magnification: ×200)



Immunohistochemistry of paraffin-embedded Human liver cancer tissue using TA322186 (ALG12 Antibody) at dilution 1/20 (Original magnification:  $\times 200$ )



Immunohistochemistry of paraffin-embedded Human liver cancer tissue using TA322186 (ALG12 Antibody) at dilution 1/20, treated with fusion protein. (Original magnification:  $\times 200$ )