

Product datasheet for **TA322185**

ALG12 Rabbit Polyclonal Antibody

Product data:

Product Type:	Primary Antibodies
Applications:	IHC, WB
Recommended Dilution:	WB: 200-1000 WB positive control: PC3 cells IHC: 25-100 Positive control: Human thyroid cancer Predicted cell location: Cytoplasm
Reactivity:	Human, Mouse, Rat
Host:	Rabbit
Isotype:	IgG
Clonality:	Polyclonal
Immunogen:	Fusion protein corresponding to a region derived from 367-488 amino acids of human ALG12, alpha-1,6-mannosyltransferase
Formulation:	PBS pH7.3, 0.05% NaN ₃ , 50% glycerol
Concentration:	lot specific
Purification:	Antigen affinity purification
Conjugation:	Unconjugated
Storage:	Store at -20°C as received.
Stability:	Stable for 12 months from date of receipt.
Gene Name:	ALG12, alpha-1,6-mannosyltransferase
Database Link:	NP_077010 Entrez Gene 223774 Mouse Entrez Gene 315212 Rat Entrez Gene 79087 Human Q9BV10
Background:	This gene encodes a member of the glycosyltransferase 22 family. The encoded protein catalyzes the addition of the eighth mannose residue in an alpha-1,6 linkage onto the dolichol-PP-oligosaccharide precursor (dolichol-PP-Man(7)GlcNAc(2)) required for protein glycosylation. Mutations in this gene have been associated with congenital disorder of glycosylation type Ig (CDG-Ig) characterized by abnormal N-glycosylation.



[View online »](#)

Synonyms: CDG1G; ECM39; hALG12; PP14673

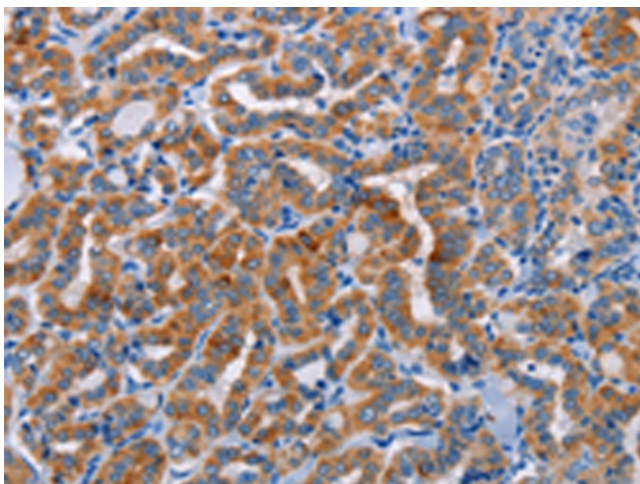
Protein Families: Transmembrane

Protein Pathways: Metabolic pathways, N-Glycan biosynthesis

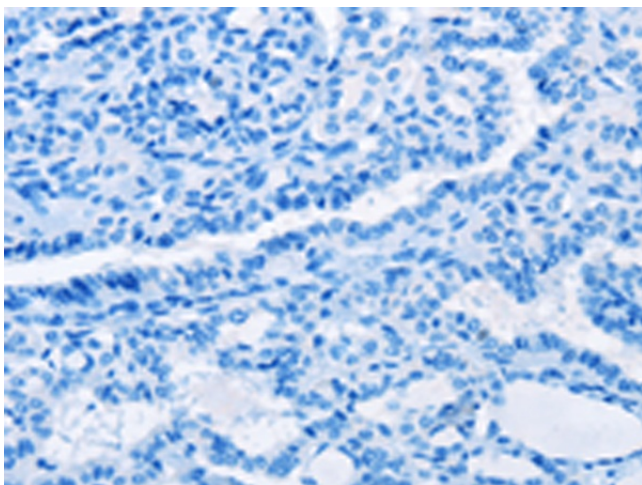
Product images:



Gel: 8%SDS-PAGE
Lysate: 40 µg
Lane: PC3 cells
Primary antibody: TA322185 (ALG12 Antibody) at dilution 1/200
Secondary antibody: Goat anti rabbit IgG at 1/8000 dilution
Exposure time: 10 seconds



Immunohistochemistry of paraffin-embedded Human thyroid cancer tissue using TA322185 (ALG12 Antibody) at dilution 1/20 (Original magnification: ×200)



Immunohistochemistry of paraffin-embedded Human thyroid cancer tissue using TA322185 (ALG12 Antibody) at dilution 1/20, treated with fusion protein. (Original magnification: ×200)