

Product datasheet for **TA322181S**

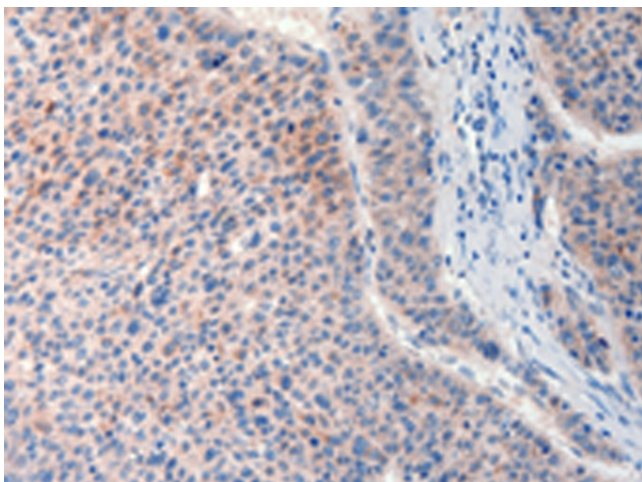
FAT4 Rabbit Polyclonal Antibody

Product data:

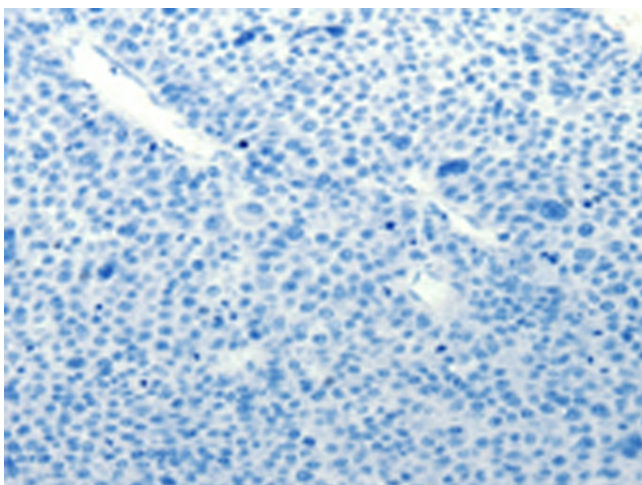
Product Type:	Primary Antibodies
Applications:	IHC
Recommended Dilution:	IHC: 25-100 Positive control: Human liver cancer Predicted cell location: Cytoplasm
Reactivity:	Human
Host:	Rabbit
Isotype:	IgG
Clonality:	Polyclonal
Immunogen:	Synthetic peptide TTKPVPKDGEAEQYV corresponding to a region derived from 4967-4981 amino acids of protocadherin Fat 4 isoform 3 precursor (NP_078858).
Formulation:	PBS pH7.3, 0.05% NaN ₃ , 50% glycerol
Purification:	Antigen affinity purification
Conjugation:	Unconjugated
Storage:	Store at -20°C as received.
Stability:	Stable for 12 months from date of receipt.
Gene Name:	FAT atypical cadherin 4
Database Link:	NP_078858 Entrez Gene 79633 Human Q6V0I7
Background:	FAT1; FAT2; FAT3 and FAT4 are human homologs of Drosophila Fat; which is involved in tumor suppression and planar cell polarity (PCP). FAT4 undergo the first proteolytic cleavage by Furin and are predicted to undergo the second cleavage by ??secretase to
Synonyms:	CDHF14; CDHR11; FAT-J; FATJ; HKLLS2; NBLA00548; VMLDS2
Protein Families:	Transmembrane



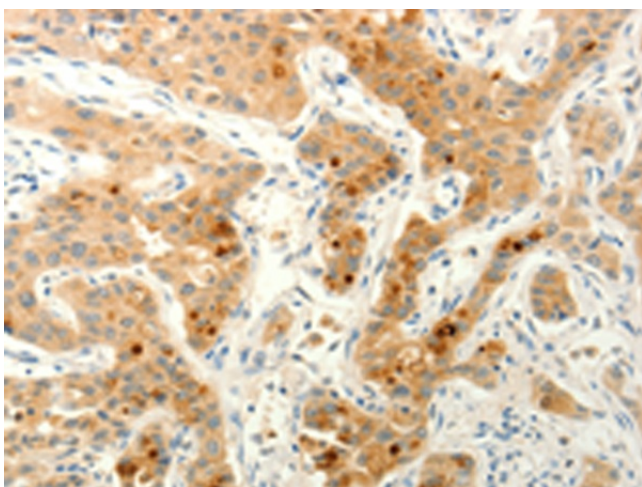
[View online »](#)

Product images:

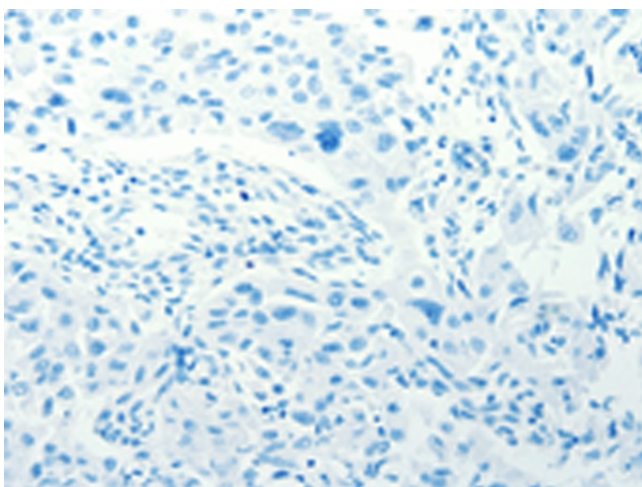
Immunohistochemistry of paraffin-embedded Human liver cancer tissue using [TA322181] (FAT4 Antibody) at dilution 1/20 (Original magnification: $\times 200$)



Immunohistochemistry of paraffin-embedded Human liver cancer tissue using [TA322181] (FAT4 Antibody) at dilution 1/20, treated with synthetic peptide. (Original magnification: $\times 200$)



Immunohistochemistry of paraffin-embedded Human lung cancer tissue using [TA322181] (FAT4 Antibody) at dilution 1/20 (Original magnification: $\times 200$)



Immunohistochemistry of paraffin-embedded Human lung cancer tissue using [TA322181] (FAT4 Antibody) at dilution 1/20, treated with synthetic peptide. (Original magnification: $\times 200$)