

Product datasheet for **TA322180S**

MUC16 Rabbit Polyclonal Antibody

Product data:

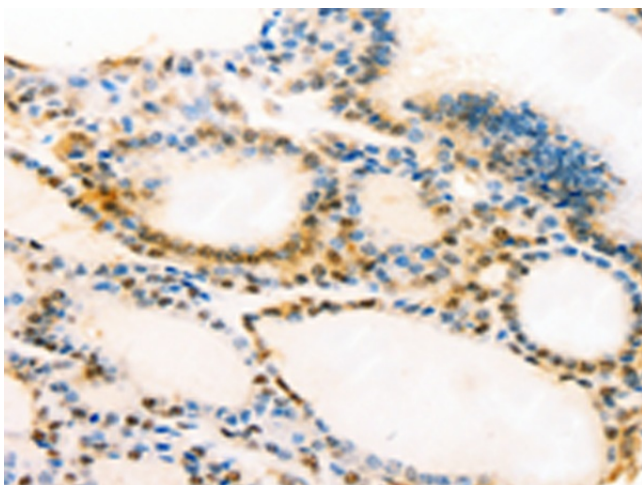
Product Type:	Primary Antibodies
Applications:	IHC
Recommended Dilution:	IHC: 15-50 Positive control: Human thyroid cancer Predicted cell location: cytoplasm, Nucleus
Reactivity:	Human
Host:	Rabbit
Isotype:	IgG
Clonality:	Polyclonal
Immunogen:	Synthetic peptide corresponding to a region derived from c-terminal 13 amino acids of Human Mucin 16, cell surface associated
Formulation:	PBS pH7.3, 0.05% NaN ₃ , 50% glycerol
Purification:	Antigen affinity purification
Conjugation:	Unconjugated
Storage:	Store at -20°C as received.
Stability:	Stable for 12 months from date of receipt.
Gene Name:	mucin 16, cell surface associated
Database Link:	NP_078966 Entrez Gene 94025 Human Q8WXI7
Background:	CA-125(cancer?antigen?125 or carbohydrate antigen 125) also known as?mucin 16?or? MUC16?is a?protein?that in humans is encoded by the?MUC16?gene. MUC16 is a member of the mucin family glycoproteins. CA-125 has found application as a tumor marker or biomarker that may be elevated in the blood of some patients with specific types of cancers;or other benign conditions. Expressed in corneal and conjunctival epithelia (at protein level). Overexpressed in ovarian carcinomas and ovarian low malignant potential (LMP) tumors as compared to the expression in normal ovarian tissue and ovarian adenomas.



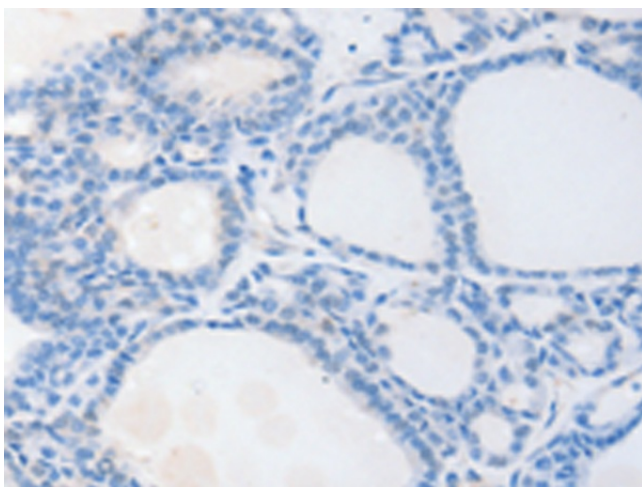
[View online »](#)

Synonyms: CA125

Product images:



Immunohistochemistry of paraffin-embedded Human thyroid cancer tissue using [TA322180] (MUC16 Antibody) at dilution 1/20 (Original magnification: $\times 200$)



Immunohistochemistry of paraffin-embedded Human thyroid cancer tissue using [TA322180] (MUC16 Antibody) at dilution 1/20, treated with synthetic peptide. (Original magnification: $\times 200$)