

Product datasheet for **TA322178**

AGBL2 Rabbit Polyclonal Antibody

Product data:

Product Type:	Primary Antibodies
Applications:	IHC, WB
Recommended Dilution:	WB: 200-1000 WB positive control: 293T cell IHC: 25-100 Positive control: Human gastric cancer Predicted cell location: Cytoplasm
Reactivity:	Human
Host:	Rabbit
Isotype:	IgG
Clonality:	Polyclonal
Immunogen:	Full length fusion protein
Formulation:	PBS pH7.3, 0.05% NaN ₃ , 50% glycerol
Concentration:	lot specific
Purification:	Antigen affinity purification
Conjugation:	Unconjugated
Storage:	Store at -20°C as received.
Stability:	Stable for 12 months from date of receipt.
Gene Name:	ATP/GTP binding protein-like 2
Database Link:	NP_079059 Entrez Gene 79841 Human Q5U5Z8



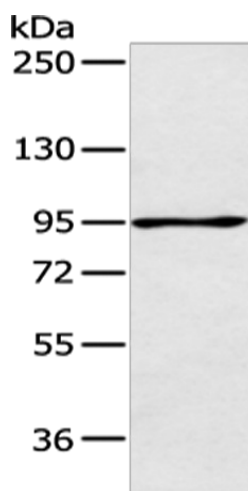
[View online »](#)

Background: Metalloprotease that may play a role in the processing of tubulin. Knockdown of AGBL2 results in a failure of the cell to dephosphorylate the C-terminal EEY region of α -tubulin and indicates that, it is a candidate for the long sought after tubulin tyrosine carboxypeptidase important in regulation of microtubule dynamics. RARRES1, its interacting partners AGBL2, Eg5/KIF11, another EEY bearing protein (EB1), and the microtubule tyrosination cycle are important in tumorigenesis and identify a novel area for therapeutic intervention.

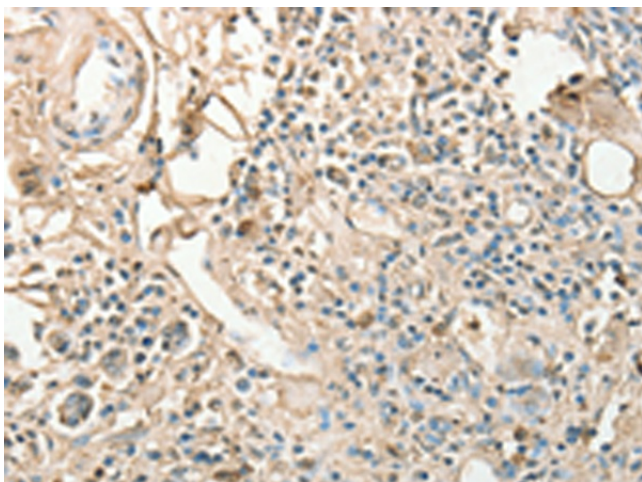
Synonyms: CCP2

Protein Families: Druggable Genome

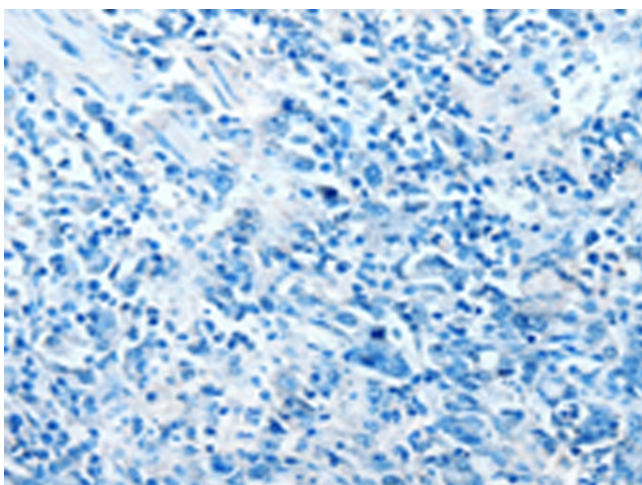
Product images:



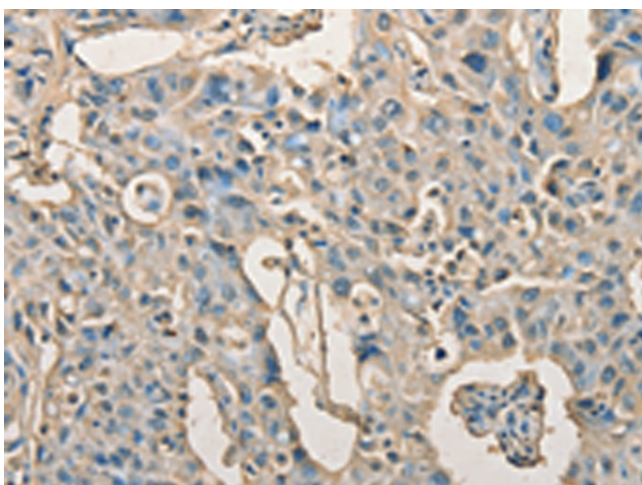
Gel: 6%SDS-PAGE
Lysate: 40 μ g
Lane: 293T cell
Primary antibody: TA322178 (AGBL2 Antibody) at dilution 1/200
Secondary antibody: Goat anti rabbit IgG at 1/8000 dilution
Exposure time: 1 minute



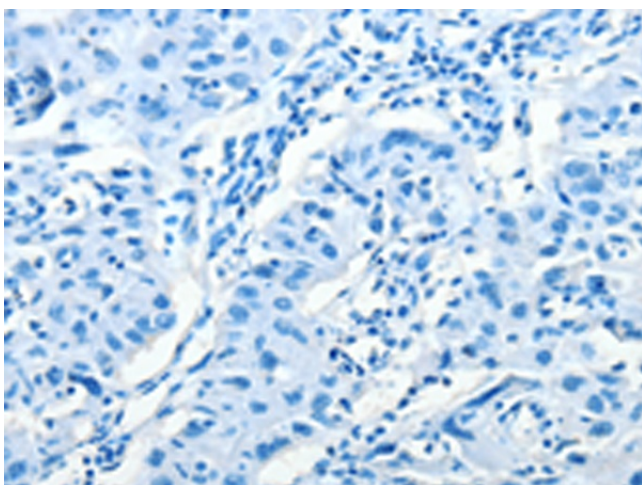
Immunohistochemistry of paraffin-embedded Human gastric cancer tissue using TA322178 (AGBL2 Antibody) at dilution 1/25 (Original magnification: \times 200)



Immunohistochemistry of paraffin-embedded Human gastric cancer tissue using TA322178 (AGBL2 Antibody) at dilution 1/25, treated with fusion protein. (Original magnification: ×200)



Immunohistochemistry of paraffin-embedded Human lung cancer tissue using TA322178 (AGBL2 Antibody) at dilution 1/25 (Original magnification: ×200)



Immunohistochemistry of paraffin-embedded Human lung cancer tissue using TA322178 (AGBL2 Antibody) at dilution 1/25, treated with fusion protein. (Original magnification: ×200)