

## Product datasheet for **TA322177**

### AGBL2 Rabbit Polyclonal Antibody

#### Product data:

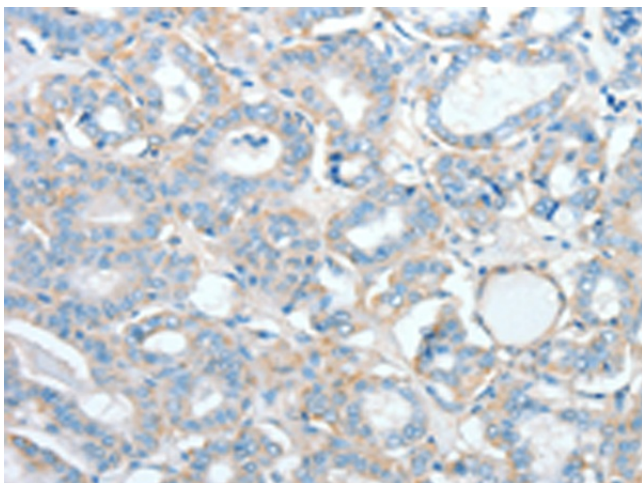
Product Type:	Primary Antibodies
Applications:	IHC
Recommended Dilution:	IHC: 25-100 Positive control: Human thyroid cancer Predicted cell location: Cytoplasm
Reactivity:	Human
Host:	Rabbit
Isotype:	IgG
Clonality:	Polyclonal
Immunogen:	Full length fusion protein
Formulation:	PBS pH7.3, 0.05% NaN <sub>3</sub> , 50% glycerol
Concentration:	lot specific
Purification:	Antigen affinity purification
Conjugation:	Unconjugated
Storage:	Store at -20°C as received.
Stability:	Stable for 12 months from date of receipt.
Gene Name:	ATP/GTP binding protein-like 2
Database Link:	<a href="#">NP_079059</a> <a href="#">Entrez Gene 79841 Human</a> <a href="#">Q5U5Z8</a>
Background:	Metalloprotease that may play a role in the processing of tubulin. Knockdown of AGBL2 results in a failure of the cell to dephosphorylate the C-terminal EEY region of $\alpha$ -tubulin and indicates that, it is a candidate for the long sought after tubulin tyrosine carboxypeptidase important in regulation of microtubule dynamics. RARRES1, its interacting partners AGBL2, Eg5/KIF11, another EEY bearing protein (EB1), and the microtubule tyrosination cycle are important in tumorigenesis and identify a novel area for therapeutic intervention.
Synonyms:	CCP2



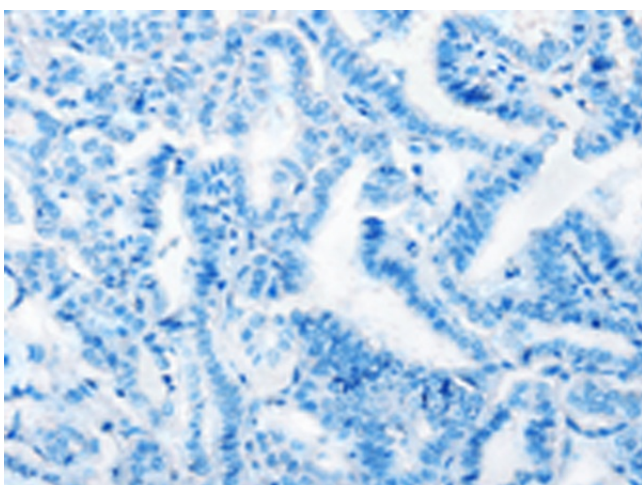
[View online »](#)

Protein Families: Druggable Genome

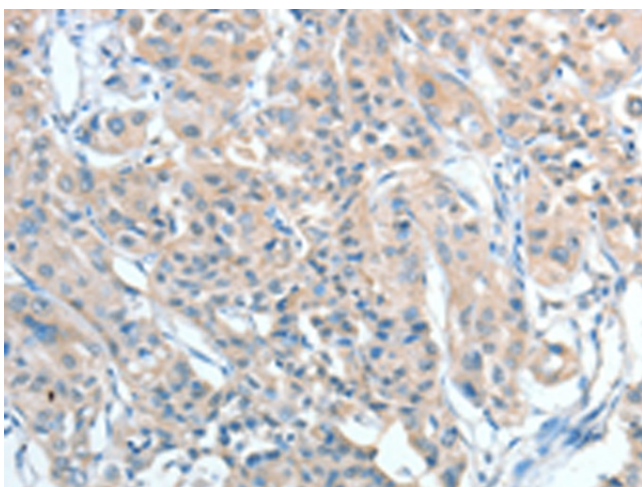
### Product images:



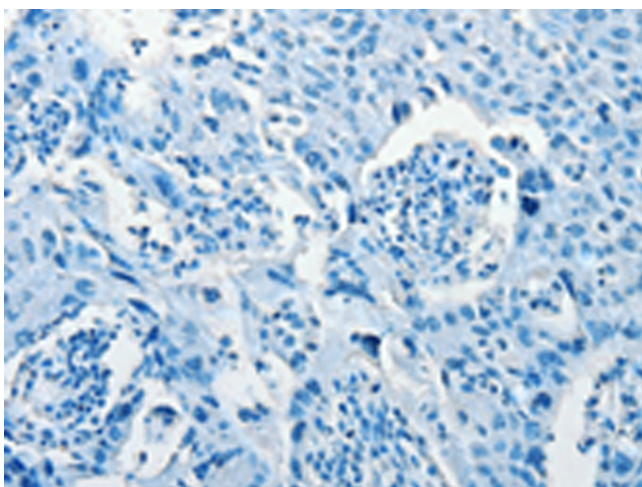
Immunohistochemistry of paraffin-embedded Human thyroid cancer tissue using TA322177 (AGBL2 Antibody) at dilution 1/25 (Original magnification:  $\times 200$ )



Immunohistochemistry of paraffin-embedded Human thyroid cancer tissue using TA322177 (AGBL2 Antibody) at dilution 1/25, treated with fusion protein. (Original magnification:  $\times 200$ )



Immunohistochemistry of paraffin-embedded Human lung cancer tissue using TA322177 (AGBL2 Antibody) at dilution 1/25 (Original magnification: ×200)



Immunohistochemistry of paraffin-embedded Human lung cancer tissue using TA322177 (AGBL2 Antibody) at dilution 1/25, treated with fusion protein. (Original magnification: ×200)