

Product datasheet for **TA322176**

NANOG Rabbit Polyclonal Antibody

Product data:

Product Type:	Primary Antibodies
Applications:	WB
Recommended Dilution:	WB: 1:500-1000
Reactivity:	Human, Mouse
Host:	Rabbit
Isotype:	IgG
Clonality:	Polyclonal
Immunogen:	Peptide sequence around aa.137~141 (K-Q-V-K-T) derived from Nano g
Formulation:	PBS pH7.3, 0.05% NaN ₃ , 50% glycerol
Concentration:	lot specific
Purification:	Antigen affinity purification
Conjugation:	Unconjugated
Storage:	Store at -20°C as received.
Stability:	Stable for 12 months from date of receipt.
Predicted Protein Size:	35 kDa
Gene Name:	Nanog homeobox
Database Link:	NP_079141 Entrez Gene 71950 Mouse Entrez Gene 79923 Human Q9H9S0

Background: Transcription regulator involved in inner cell mass and embryonic stem (ES) cells proliferation and self-renewal. Imposes pluripotency on ES cells and prevents their differentiation towards extraembryonic endoderm and trophoctoderm lineages. Blocks bone morphogenetic protein-induced mesoderm differentiation of ES cells by physically interacting with SMAD1 and interfering with the recruitment of coactivators to the active SMAD transcriptional complexes By similarity. Acts as a transcriptional activator or repressor By similarity. Binds optimally to the DNA consensus sequence 5'-TAAT[GT][GT]-3' or 5'-[CG][GA][CG]C[GC]ATTAN[GC]-3' By similarity. When overexpressed, promotes cells to enter into S phase and proliferation

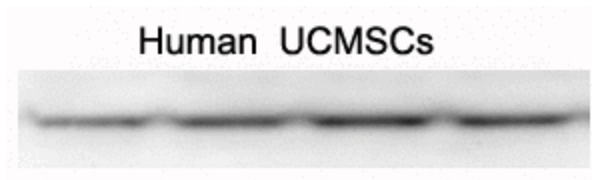


[View online »](#)

Synonyms: homeobox transcription factor Nanog; homeobox transcription factor Nanog-delta 48; Nanog homeobox

Protein Families: Cancer stem cells, Embryonic stem cells, ES Cell Differentiation/IPS, Induced pluripotent stem cells, Stem cell - Pluripotency

Product images:



Predicted band size: 35 kDa. Positive control: Human Umbilical cord mesenchymal stem cell lysate. Recommended dilution: 1/ 500-1000. (Gel: 10%SDS-PAGE All lane: Human Umbilical cord mesenchymal stem cell Lysates: 30 ug per lane Primary antibody: 1/500 dilution Secondary antibody: Goat anti Rabbit IgG - H&L (HRP) at 1/10000 dilution Exposure time: 1 minute)