

Product datasheet for **TA322173S**

PIF1 Rabbit Polyclonal Antibody

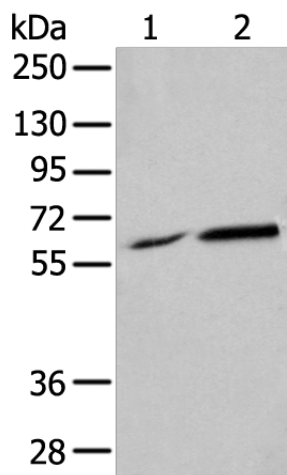
Product data:

Product Type:	Primary Antibodies
Applications:	IHC, WB
Recommended Dilution:	WB: 200-1000 WB positive control: 293T and RAW264.7 cell lysates IHC: 25-100 Positive control: Human ovarian cancer Predicted cell location: Nucleus
Reactivity:	Human, Mouse
Host:	Rabbit
Isotype:	IgG
Clonality:	Polyclonal
Immunogen:	Synthetic peptide corresponding to a region derived from 9-28 amino acids of Human ATP-dependent DNA helicase PIF1
Formulation:	PBS pH7.3, 0.05% NaN ₃ , 50% glycerol
Purification:	Antigen affinity purification
Conjugation:	Unconjugated
Storage:	Store at -20°C as received.
Stability:	Stable for 12 months from date of receipt.
Predicted Protein Size:	70 kDa
Gene Name:	PIF1 5'-to-3' DNA helicase
Database Link:	NP_079325 Entrez Gene 208084 Mouse Entrez Gene 80119 Human Q9H611
Background:	PIF1 is a 5-prime-to-3-prime DNA helicase that negatively regulates telomerase (see TERT; MIM 187270); a reverse transcriptase that maintains telomere length. Tightly cell cycle regulated and expressed in late S/G2 phase.
Synonyms:	C15orf20; PIF

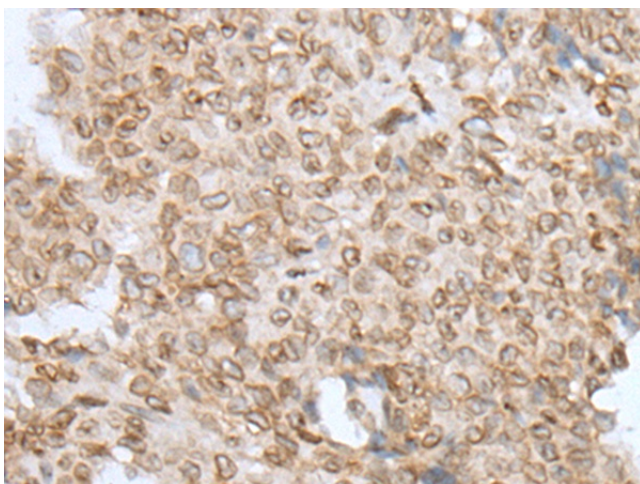


[View online »](#)

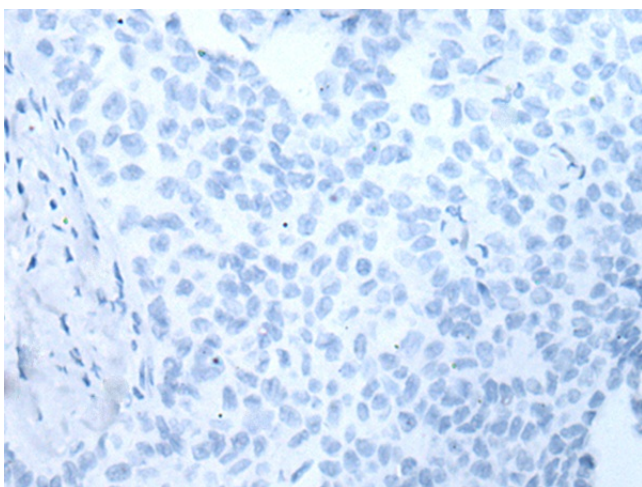
Product images:



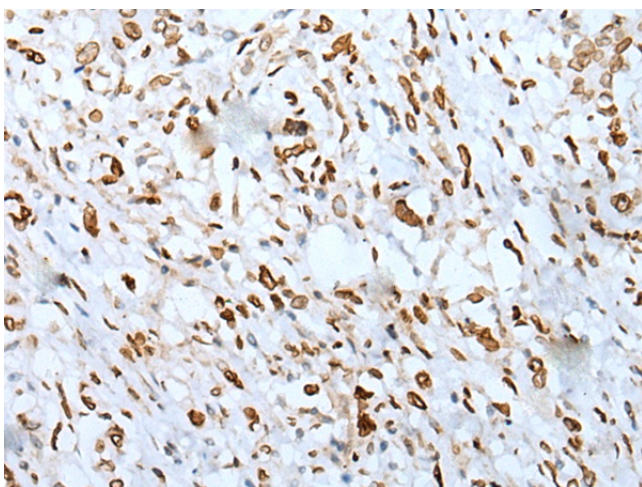
Gel: 8%SDS-PAGE
Lysate: 40 μ g
Lane 1-2: 293T and RAW264.7 cell lysates
Primary antibody: [TA322173] (PIF1 Antibody) at dilution 1/200
Secondary antibody: Goat anti rabbit IgG at 1/8000 dilution
Exposure time: 20 seconds



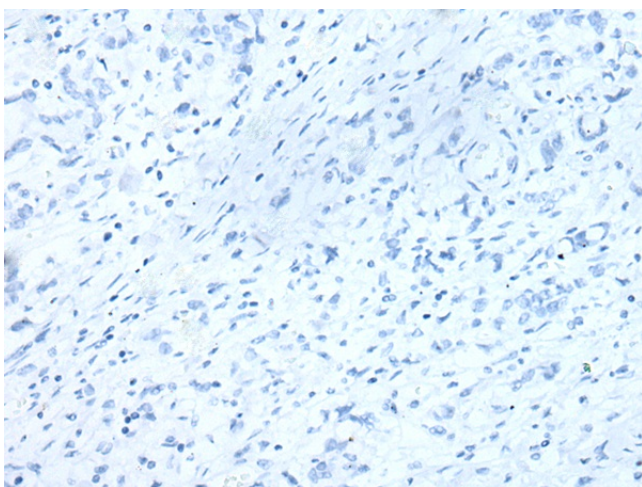
Immunohistochemistry of paraffin-embedded Human ovarian cancer tissue using [TA322173] (PIF1 Antibody) at dilution 1/35 (Original magnification: \times 200)



Immunohistochemistry of paraffin-embedded Human ovarian cancer tissue using [TA322173] (PIF1 Antibody) at dilution 1/35, treated with synthetic peptide. (Original magnification: $\times 200$)



Immunohistochemistry of paraffin-embedded Human gastric cancer tissue using [TA322173] (PIF1 Antibody) at dilution 1/35 (Original magnification: $\times 200$)



Immunohistochemistry of paraffin-embedded Human gastric cancer tissue using [TA322173] (PIF1 Antibody) at dilution 1/35, treated with synthetic peptide. (Original magnification: $\times 200$)