

Product datasheet for **TA322171**

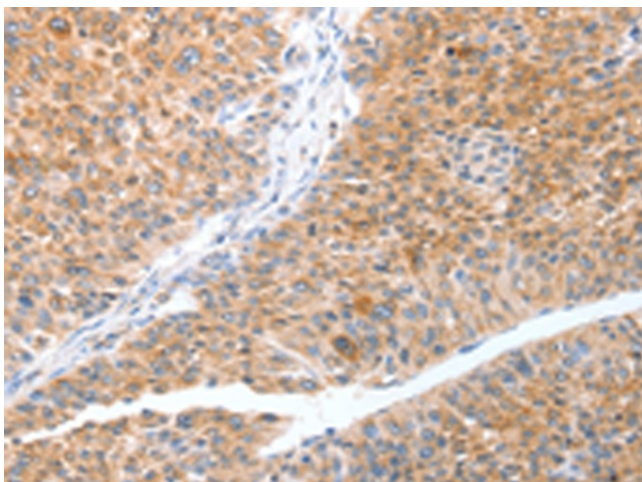
TRAF3IP3 Rabbit Polyclonal Antibody

Product data:

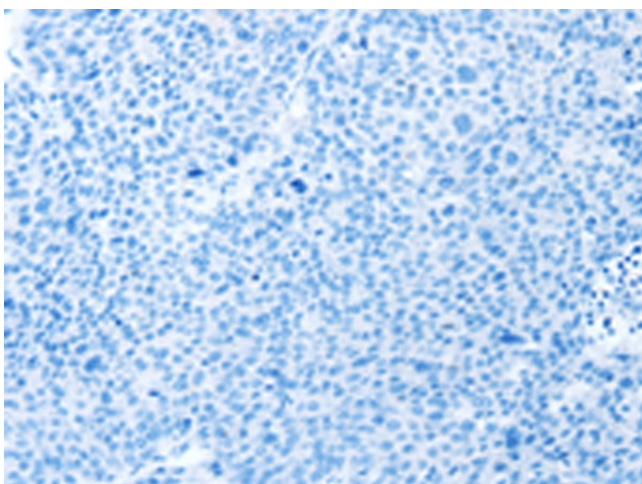
Product Type:	Primary Antibodies
Applications:	IHC
Recommended Dilution:	IHC: 25-100 Positive control: Human liver cancer Predicted cell location: Cytoplasm
Reactivity:	Human, Mouse
Host:	Rabbit
Isotype:	IgG
Clonality:	Polyclonal
Immunogen:	Fusion protein corresponding to a region derived from 240-436 amino acids of human TRAF3 interacting protein 3
Formulation:	PBS pH7.3, 0.05% NaN ₃ , 50% glycerol
Concentration:	lot specific
Purification:	Antigen affinity purification
Conjugation:	Unconjugated
Storage:	Store at -20°C as received.
Stability:	Stable for 12 months from date of receipt.
Gene Name:	TRAF3 interacting protein 3
Database Link:	NP_079504 Entrez Gene 215243 Mouse Entrez Gene 80342 Human Q9Y228
Background:	The gene encodes a protein that mediates cell growth by modulating the c-Jun N-terminal kinase signal transduction pathway. The encoded protein may also interact with a large multiprotein assembly containing the phosphatase 2A catalytic subunit.
Synonyms:	T3JAM
Protein Families:	Druggable Genome, Transmembrane



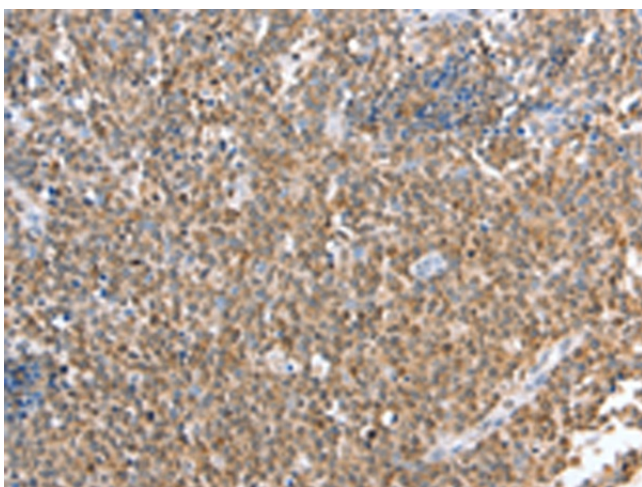
[View online »](#)

Product images:

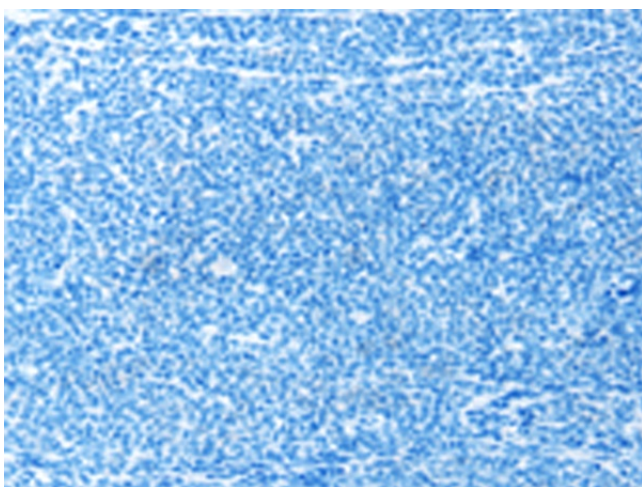
Immunohistochemistry of paraffin-embedded Human liver cancer tissue using TA322171 (TRAF3IP3 Antibody) at dilution 1/20 (Original magnification: $\times 200$)



Immunohistochemistry of paraffin-embedded Human liver cancer tissue using TA322171 (TRAF3IP3 Antibody) at dilution 1/20, treated with fusion protein. (Original magnification: $\times 200$)



Immunohistochemistry of paraffin-embedded Human lymphoma tissue using TA322171 (TRAF3IP3 Antibody) at dilution 1/20 (Original magnification: $\times 200$)



Immunohistochemistry of paraffin-embedded Human lymphoma tissue using TA322171 (TRAF3IP3 Antibody) at dilution 1/20, treated with fusion protein. (Original magnification: $\times 200$)