

Product datasheet for **TA322168**

BPIL1 (BPIFB2) Rabbit Polyclonal Antibody

Product data:

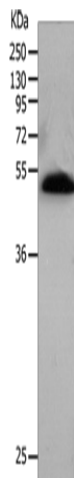
| | |
|--------------------------------|--|
| Product Type: | Primary Antibodies |
| Applications: | IHC, WB |
| Recommended Dilution: | WB: 1000-5000 WB positive control: Human lung tissue IHC: 25-100 Positive control: Human breast cancer Predicted cell location: Cytoplasm |
| Reactivity: | Human, Mouse |
| Host: | Rabbit |
| Isotype: | IgG |
| Clonality: | Polyclonal |
| Immunogen: | Synthetic peptide corresponding to a region derived from 37-50 amino acids of human BPI fold containing family B, member 2 |
| Formulation: | PBS pH7.3, 0.05% NaN ₃ , 50% glycerol |
| Concentration: | lot specific |
| Purification: | Antigen affinity purification |
| Conjugation: | Unconjugated |
| Storage: | Store at -20°C as received. |
| Stability: | Stable for 12 months from date of receipt. |
| Predicted Protein Size: | 49 kDa |
| Gene Name: | BPI fold containing family B member 2 |
| Database Link: | NP_079503 Entrez Gene 66557 Mouse Entrez Gene 80341 Human Q8N4F0 |
| Background: | This gene encodes a member of the lipid transfer/lipopolysaccharide binding protein (LT/LBP) gene family. It is highly expressed in hypertrophic tonsils. This gene and three other members of the LT/LBP gene family form a cluster on the long arm of chromosome 20. |
| Synonyms: | BPIL1; C20orf184; dj726C3.2; LPLUNC2; RYSR |



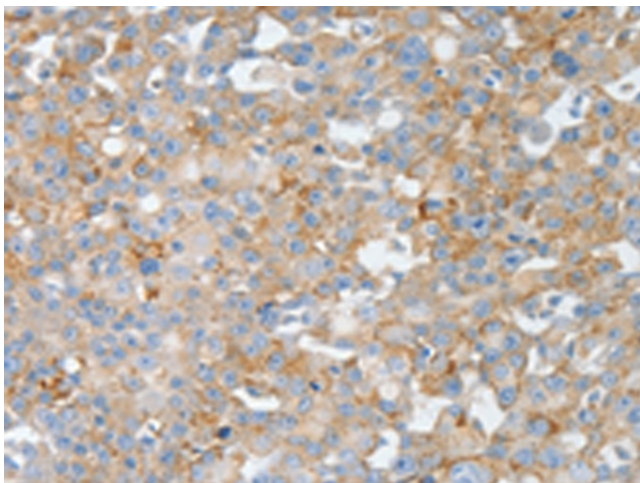
[View online »](#)

Protein Families: Druggable Genome, Secreted Protein, Transmembrane

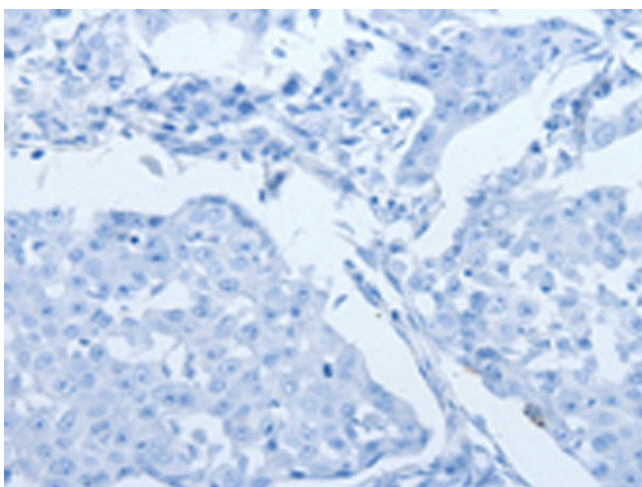
Product images:



Gel: 10%SDS-PAGE
Lysate: 80 µg
Lane: Human lung tissue
Primary antibody: TA322168 (BPIFB2 Antibody) at dilution 1/530
Secondary antibody: Goat anti rabbit IgG at 1/8000 dilution
Exposure time: 10 minutes



Immunohistochemistry of paraffin-embedded Human breast cancer tissue using TA322168 (BPIFB2 Antibody) at dilution 1/50 (Original magnification: ×200)



Immunohistochemistry of paraffin-embedded Human breast cancer tissue using TA322168 (BPIFB2 Antibody) at dilution 1/50, treated with synthetic peptide. (Original magnification: ×200)