

Product datasheet for **TA322167**

EDG8 (S1PR5) Rabbit Polyclonal Antibody

Product data:

Product Type:	Primary Antibodies
Applications:	WB
Recommended Dilution:	WB: 500-2000 WB positive control: Human fetal brain tissue lysate
Reactivity:	Human, Mouse, Rat
Host:	Rabbit
Isotype:	IgG
Clonality:	Polyclonal
Immunogen:	Synthetic peptide corresponding to a region derived from 25-39 amino acids of human sphingosine-1-phosphate receptor 5
Formulation:	PBS pH7.3, 0.05% NaN ₃ , 50% glycerol
Concentration:	lot specific
Purification:	Antigen affinity purification
Conjugation:	Unconjugated
Storage:	Store at -20°C as received.
Stability:	Stable for 12 months from date of receipt.
Predicted Protein Size:	42 kDa
Gene Name:	sphingosine-1-phosphate receptor 5
Database Link:	NP_110387 Entrez Gene 60399 Rat Entrez Gene 94226 Mouse Entrez Gene 53637 Human Q9H228
Background:	The lysosphingolipid sphingosine 1-phosphate (S1P) regulates cell proliferation; apoptosis; motility; and neurite retraction. Its actions may be both intracellular as a second messenger and extracellular as a receptor ligand. S1P and the structurally related lysolipid mediator lysophosphatidic acid (LPA) signal cells through a set of G protein-coupled receptors known as EDG receptors. Some EDG receptors are S1P receptors; others are LPA receptors.
Synonyms:	Edg-8; EDG8; S1P5; SPPR-1; SPPR-2

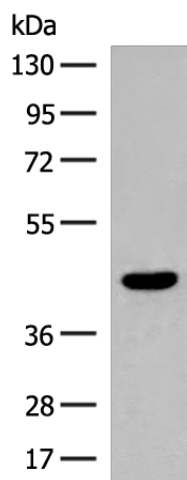


[View online »](#)

Protein Families: Druggable Genome, GPCR, Transmembrane

Protein Pathways: Neuroactive ligand-receptor interaction

Product images:



Gel: 8%SDS-PAGE

Lysate: 40 μ g

Lane: Human fetal brain tissue lysate

Primary antibody: TA322167 (S1PR5 Antibody) at dilution 1/200

Secondary antibody: Goat anti rabbit IgG at 1/8000 dilution

Exposure time: 30 seconds