

Product datasheet for **TA322163**

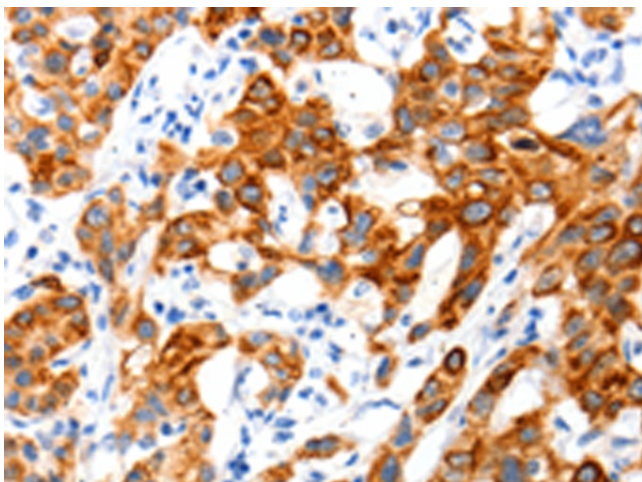
SLC2A11 Rabbit Polyclonal Antibody

Product data:

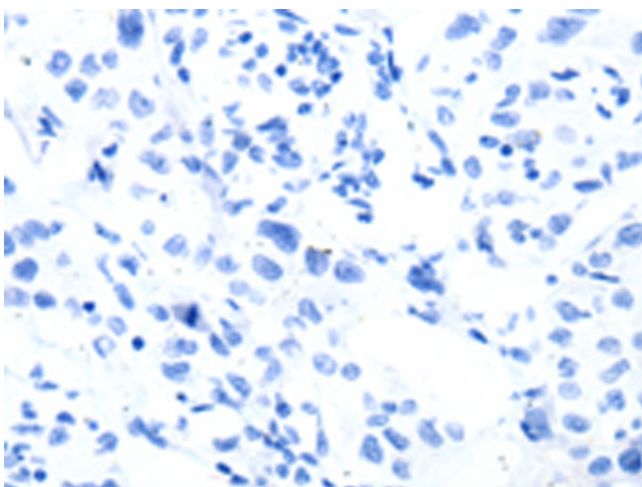
Product Type:	Primary Antibodies
Applications:	IHC
Recommended Dilution:	IHC: 100-300 Positive control: Human lung cancer Predicted cell location: Cytoplasm, Cell membrane
Reactivity:	Human
Host:	Rabbit
Isotype:	IgG
Clonality:	Polyclonal
Immunogen:	Synthetic peptide peptide corresponding to a region derived from 468-481 amino acids of human solute carrier family 2 (facilitated glucose transporter), member 11
Formulation:	PBS pH7.3, 0.05% NaN ₃ , 50% glycerol
Concentration:	lot specific
Purification:	Antigen affinity purification
Conjugation:	Unconjugated
Storage:	Store at -20°C as received.
Stability:	Stable for 12 months from date of receipt.
Gene Name:	solute carrier family 2 member 11
Database Link:	NP_110434 Entrez Gene 66035 Human Q9BYW1
Background:	Solute carrier family 2; facilitated glucose transporter member 11?(SLC2A11) also known as? glucose transporter type 10/11?(GLUT-10/11) is a?protein?that in humans is encoded by the SLC2A11?gene. SLC2A11 belongs to a family of plasma membrane proteins that mediate transport of sugars across the membrane by facilitative diffusion.
Synonyms:	GLUT10; GLUT11
Protein Families:	Transmembrane



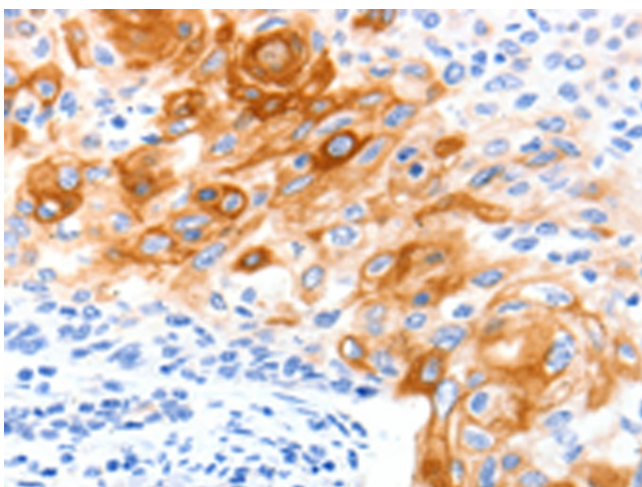
[View online »](#)

Product images:

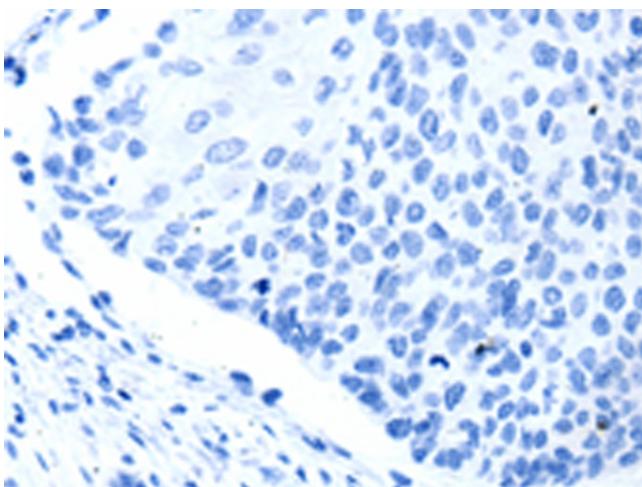
Immunohistochemistry of paraffin-embedded Human lung cancer tissue using TA322163 (SLC2A11 Antibody) at dilution 1/140 (Original magnification: $\times 200$)



Immunohistochemistry of paraffin-embedded Human lung cancer tissue using TA322163 (SLC2A11 Antibody) at dilution 1/140, treated with synthetic peptide. (Original magnification: $\times 200$)



Immunohistochemistry of paraffin-embedded Human cervical cancer tissue using TA322163 (SLC2A11 Antibody) at dilution 1/140 (Original magnification: $\times 200$)



Immunohistochemistry of paraffin-embedded Human cervical cancer tissue using TA322163 (SLC2A11 Antibody) at dilution 1/140, treated with synthetic peptide. (Original magnification: $\times 200$)