

Product datasheet for **TA322162**

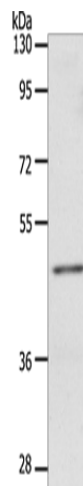
WBSCR16 (RCC1L) Rabbit Polyclonal Antibody

Product data:

Product Type:	Primary Antibodies
Applications:	WB
Recommended Dilution:	WB: 200-1000 WB positive control: Jurkat cells
Reactivity:	Human, Mouse
Host:	Rabbit
Isotype:	IgG
Clonality:	Polyclonal
Immunogen:	Synthetic peptide corresponding to a region derived from 24-42 amino acids of human Williams-Beuren syndrome chromosome region 16
Formulation:	PBS pH7.3, 0.05% NaN ₃ , 50% glycerol
Concentration:	lot specific
Purification:	Antigen affinity purification
Conjugation:	Unconjugated
Storage:	Store at -20°C as received.
Stability:	Stable for 12 months from date of receipt.
Predicted Protein Size:	50 kDa
Gene Name:	RCC1 like
Database Link:	NP_110425 Entrez Gene 94254 Mouse Entrez Gene 81554 Human Q96I51
Background:	This gene encodes an RCC1-like G-exchanging factor. It is deleted in Williams syndrome; a multisystem developmental disorder caused by the deletion of contiguous genes at 7q11.23.
Synonyms:	DKFZp434D0421; MGC44931; MGC189739



[View online »](#)

Product images:


Gel: 10%SDS-PAGE

Lysate: 40 µg

Lane: Jurkat cells

Primary antibody: TA322162 (RCC1L Antibody) at dilution 1/100

Secondary antibody: Goat anti rabbit IgG at 1/8000 dilution

Exposure time: 2 minutes