

Product datasheet for **TA322159**

ADAMTS10 Rabbit Polyclonal Antibody

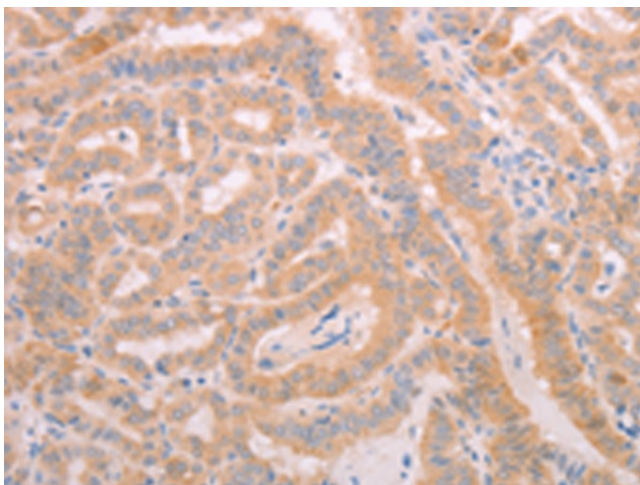
Product data:

Product Type:	Primary Antibodies
Applications:	IHC
Recommended Dilution:	IHC: 25-100 Positive control: Human thyroid cancer Predicted cell location: Cytoplasm
Reactivity:	Human, Mouse
Host:	Rabbit
Isotype:	IgG
Clonality:	Polyclonal
Immunogen:	Synthetic peptide corresponding to a region derived from 1047-1074 amino acids of human ADAM metalloproteinase with thrombospondin type 1 motif, 10
Formulation:	PBS pH7.3, 0.05% NaN ₃ , 50% glycerol
Concentration:	lot specific
Purification:	Antigen affinity purification
Conjugation:	Unconjugated
Storage:	Store at -20°C as received.
Stability:	Stable for 12 months from date of receipt.
Gene Name:	ADAM metalloproteinase with thrombospondin type 1 motif 10
Database Link:	NP_112219 Entrez Gene 224697 Mouse Entrez Gene 81794 Human Q9H324

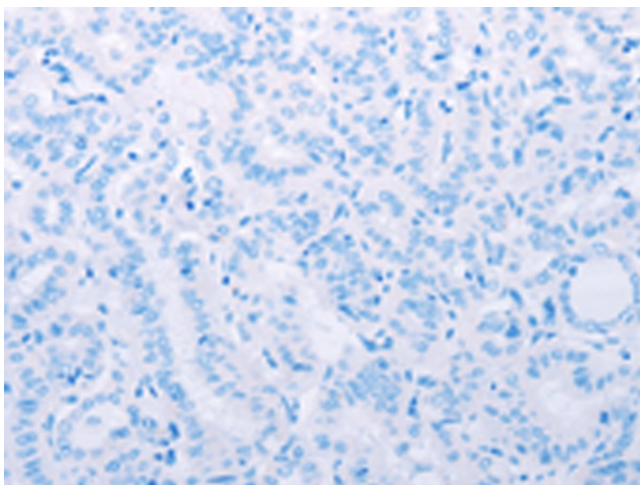


[View online »](#)

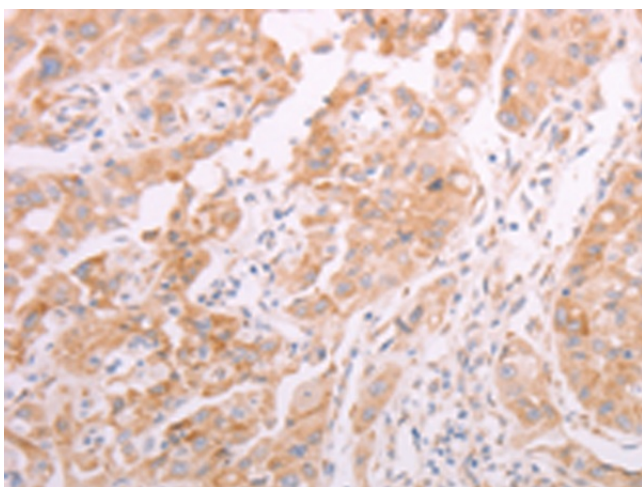
- Background:** This gene belongs to the ADAMTS (a disintegrin and metalloproteinase domain with thrombospondin type-1 motifs) family of zinc-dependent proteases. ADAMTS proteases are complex secreted enzymes containing a prometalloprotease domain of the reprotolysin type attached to an ancillary domain with a highly conserved structure that includes at least one thrombospondin type 1 repeat. They have been demonstrated to have important roles in connective tissue organization; coagulation; inflammation; arthritis; angiogenesis and cell migration. The product of this gene plays a major role in growth and in skin; lens; and heart development. It is also a candidate gene for autosomal recessive Weill-Marchesani syndrome.
- Synonyms:** ADAM-TS10; ADAMTS-10; WMS; WMS1
- Protein Families:** Druggable Genome, Secreted Protein

Product images:

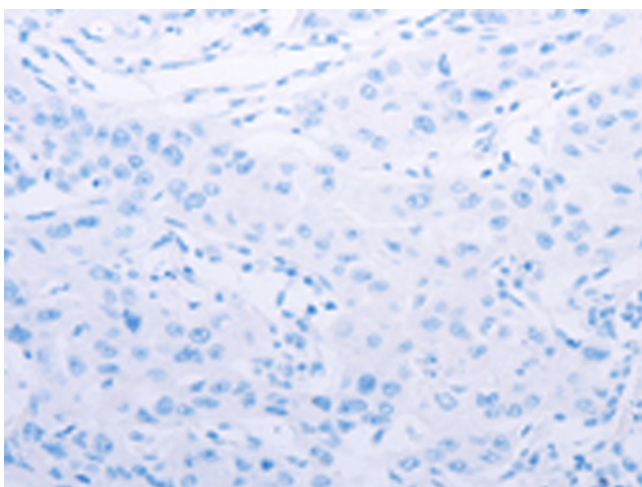
Immunohistochemistry of paraffin-embedded Human thyroid cancer tissue using TA322159 (ADAMTS10 Antibody) at dilution 1/20 (Original magnification: $\times 200$)



Immunohistochemistry of paraffin-embedded Human thyroid cancer tissue using TA322159 (ADAMTS10 Antibody) at dilution 1/20, treated with synthetic peptide. (Original magnification: $\times 200$)



Immunohistochemistry of paraffin-embedded Human lung cancer tissue using TA322159 (ADAMTS10 Antibody) at dilution 1/20 (Original magnification: ×200)



Immunohistochemistry of paraffin-embedded Human lung cancer tissue using TA322159 (ADAMTS10 Antibody) at dilution 1/20, treated with synthetic peptide. (Original magnification: ×200)