

## Product datasheet for **TA322158**

### Alkaline Phosphatase (ALPPL2) Rabbit Polyclonal Antibody

#### Product data:

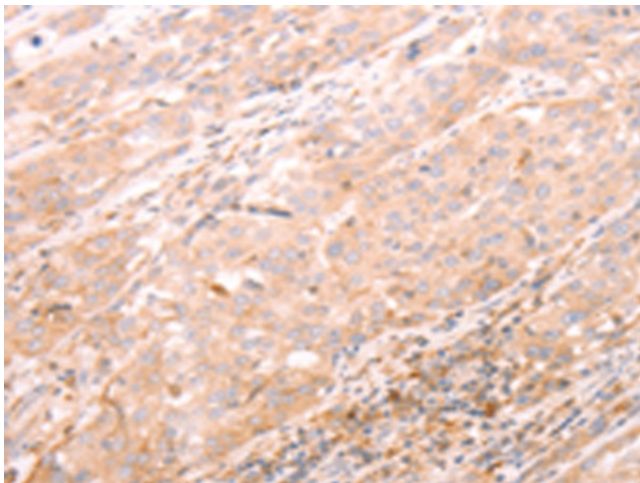
Product Type:	Primary Antibodies
Applications:	IHC
Recommended Dilution:	IHC: 25-100 Positive control: Human esophagus cancer Predicted cell location: Cytoplasm
Reactivity:	Human
Host:	Rabbit
Isotype:	IgG
Clonality:	Polyclonal
Immunogen:	Synthetic peptide corresponding to a region derived from 420-434 amino acids of human alkaline phosphatase, placental-like 2
Formulation:	PBS pH7.3, 0.05% NaN <sub>3</sub> , 50% glycerol
Concentration:	lot specific
Purification:	Antigen affinity purification
Conjugation:	Unconjugated
Storage:	Store at -20°C as received.
Stability:	Stable for 12 months from date of receipt.
Gene Name:	alkaline phosphatase, placental like 2
Database Link:	<a href="#">NP_112603</a> <a href="#">Entrez Gene 251 Human</a> <a href="#">P10696</a>
Background:	There are at least four distinct but related alkaline phosphatases: intestinal; placental; placental-like; and liver/bone/kidney (tissue non-specific). The product of this gene is a membrane bound glycosylated enzyme; localized to testis; thymus and certain germ cell tumors; that is closely related to both the placental and intestinal forms of alkaline phosphatase.
Synonyms:	ALPG; ALPPL; GCAP
Protein Families:	Druggable Genome



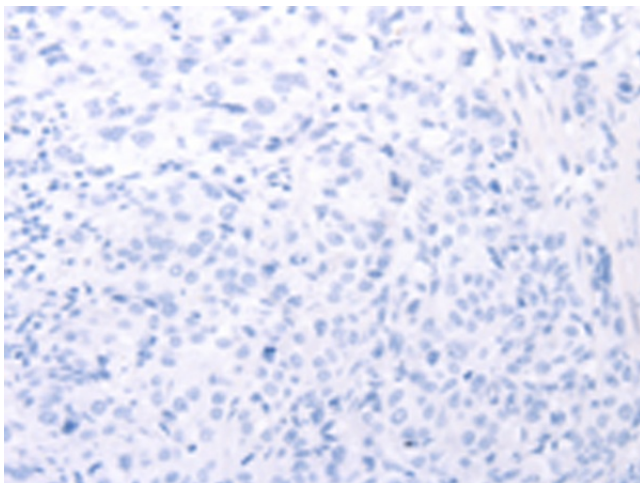
[View online »](#)

Protein Pathways: Folate biosynthesis, Metabolic pathways

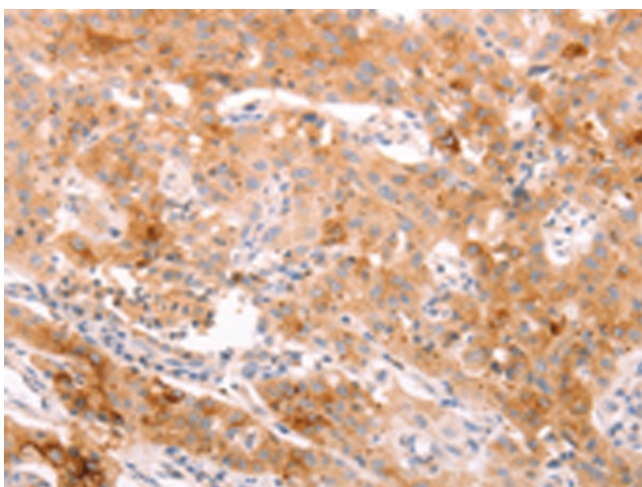
### Product images:



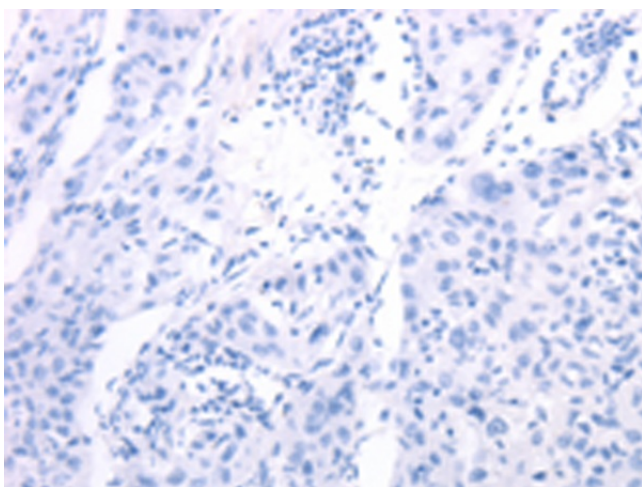
Immunohistochemistry of paraffin-embedded Human esophagus cancer tissue using TA322158 (ALPG Antibody) at dilution 1/20 (Original magnification:  $\times 200$ )



Immunohistochemistry of paraffin-embedded Human esophagus cancer tissue using TA322158 (ALPG Antibody) at dilution 1/20, treated with synthetic peptide. (Original magnification:  $\times 200$ )



Immunohistochemistry of paraffin-embedded Human lung cancer tissue using TA322158 (ALPG Antibody) at dilution 1/20 (Original magnification: ×200)



Immunohistochemistry of paraffin-embedded Human lung cancer tissue using TA322158 (ALPG Antibody) at dilution 1/20, treated with synthetic peptide. (Original magnification: ×200)