

Product datasheet for **TA322157**

SOX7 Rabbit Polyclonal Antibody

Product data:

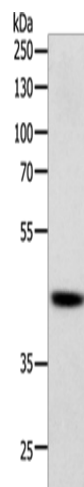
Product Type:	Primary Antibodies
Applications:	WB
Recommended Dilution:	WB: 500-2000 WB positive control: Human lymphoma tissue
Reactivity:	Human, Mouse
Host:	Rabbit
Isotype:	IgG
Clonality:	Polyclonal
Immunogen:	Fusion protein corresponding to a region derived from 268-388 amino acids of human SRY (sex determining region Y)-box 7
Formulation:	PBS pH7.3, 0.05% NaN ₃ , 50% glycerol
Concentration:	lot specific
Purification:	Antigen affinity purification
Conjugation:	Unconjugated
Storage:	Store at -20°C as received.
Stability:	Stable for 12 months from date of receipt.
Predicted Protein Size:	42 kDa
Gene Name:	SRY-box 7
Database Link:	NP_113627 Entrez Gene 20680 Mouse Entrez Gene 83595 Human Q9BT81
Background:	This gene encodes a member of the SOX (SRY-related HMG-box) family of transcription factors involved in the regulation of embryonic development and in the determination of the cell fate. The encoded protein may act as a transcriptional regulator after forming a protein complex with other proteins. The protein may play a role in tumorigenesis. A similar protein in mice is involved in the regulation of the wntless-type MMTV integration site family (Wnt) pathway.
Synonyms:	MGC10895



[View online »](#)

Protein Families: ES Cell Differentiation/IPS, Induced pluripotent stem cells, Transcription Factors

Product images:



Gel: 10%SDS-PAGE
Lysate: 40 µg
Lane: Human lymphoma tissue
Primary antibody: TA322157 (SOX7 Antibody) at dilution 1/750
Secondary antibody: Goat anti rabbit IgG at 1/8000 dilution
Exposure time: 30 seconds