

## Product datasheet for **TA322155S**

### Frizzled 8 (FZD8) Rabbit Polyclonal Antibody

#### Product data:

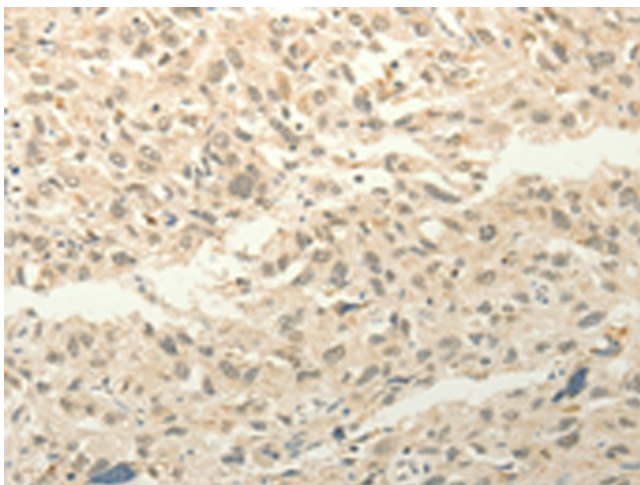
Product Type:	Primary Antibodies
Applications:	IHC
Recommended Dilution:	IHC: 50-200 Positive control: Human esophagus cancer Predicted cell location: Cytoplasm
Reactivity:	Human, Mouse, Rat
Host:	Rabbit
Isotype:	IgG
Clonality:	Polyclonal
Immunogen:	Synthetic peptide corresponding to a region derived from 680-694 amino acids of human frizzled family receptor 8
Formulation:	PBS pH7.3, 0.05% NaN <sub>3</sub> , 50% glycerol
Purification:	Antigen affinity purification
Conjugation:	Unconjugated
Storage:	Store at -20°C as received.
Stability:	Stable for 12 months from date of receipt.
Gene Name:	frizzled class receptor 8
Database Link:	<a href="#">NP_114072</a> <a href="#">Entrez Gene 14370 Mouse</a> <a href="#">Entrez Gene 364754 Rat</a> <a href="#">Entrez Gene 8325 Human</a> <a href="#">Q9H461</a>
Background:	This intronless gene is a member of the frizzled gene family. Members of this family encode seven-transmembrane domain proteins that are receptors for the Wingless type MMTV integration site family of signaling proteins. Most frizzled receptors are coupled to the beta-catenin canonical signaling pathway. This gene is highly expressed in two human cancer cell lines; indicating that it may play a role in several types of cancer. The crystal structure of the extracellular cysteine-rich domain of a similar mouse protein has been determined.
Synonyms:	FZ-8; hFZ8
Protein Families:	Druggable Genome, Transmembrane



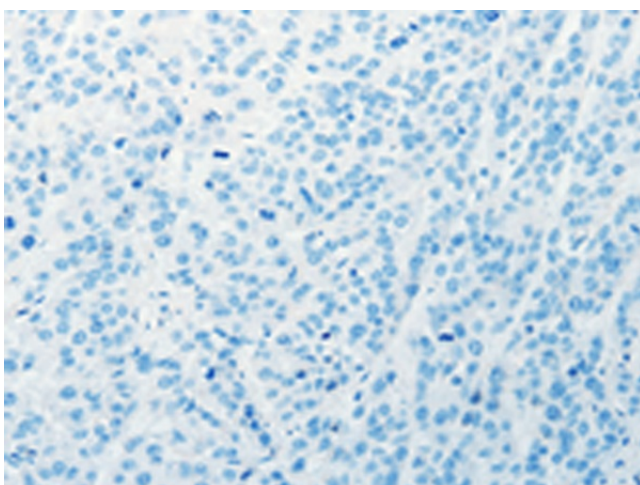
[View online »](#)

**Protein Pathways:** Basal cell carcinoma, Colorectal cancer, Melanogenesis, Pathways in cancer, Wnt signaling pathway

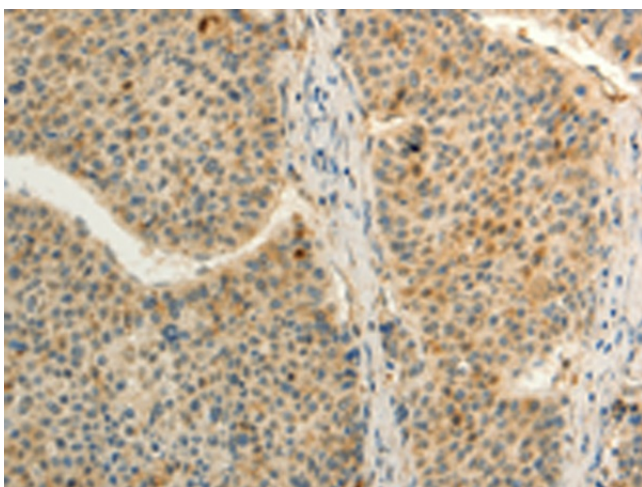
**Product images:**



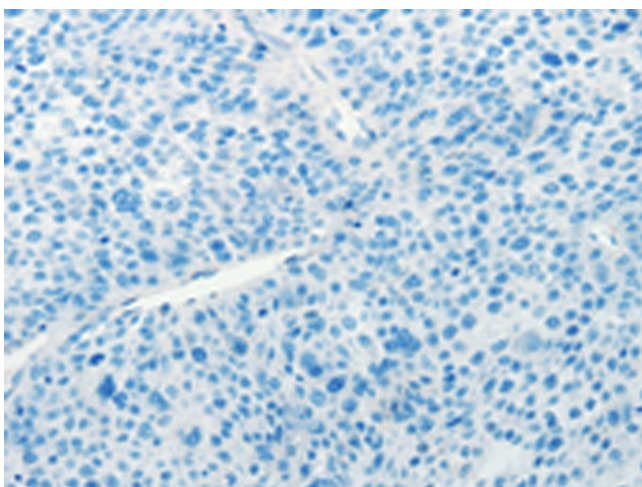
Immunohistochemistry of paraffin-embedded Human esophagus cancer tissue using [TA322155] (FZD8 Antibody) at dilution 1/50 (Original magnification:  $\times 200$ )



Immunohistochemistry of paraffin-embedded Human esophagus cancer tissue using [TA322155] (FZD8 Antibody) at dilution 1/50, treated with synthetic peptide. (Original magnification:  $\times 200$ )



Immunohistochemistry of paraffin-embedded Human liver cancer tissue using [TA322155] (FZD8 Antibody) at dilution 1/50 (Original magnification:  $\times 200$ )



Immunohistochemistry of paraffin-embedded Human liver cancer tissue using [TA322155] (FZD8 Antibody) at dilution 1/50, treated with synthetic peptide. (Original magnification:  $\times 200$ )