

Product datasheet for **TA322152**

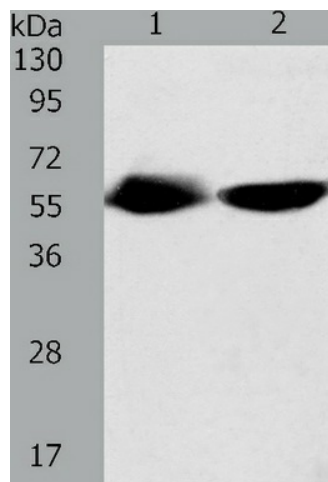
TEKT3 Rabbit Polyclonal Antibody

Product data:

Product Type:	Primary Antibodies
Applications:	WB
Recommended Dilution:	ELISA: 1:1000-2000, WB: 1:200-1000
Reactivity:	Human, Mouse, Rat
Host:	Rabbit
Isotype:	IgG
Clonality:	Polyclonal
Immunogen:	Fusion protein corresponding to C terminal 300 amino acids of human tektin 3
Formulation:	PBS pH7.3, 0.05% NaN ₃ , 50% glycerol
Concentration:	lot specific
Purification:	Antigen affinity purification
Conjugation:	Unconjugated
Storage:	Store at -20°C as received.
Stability:	Stable for 12 months from date of receipt.
Predicted Protein Size:	57 kDa
Gene Name:	tektin 3
Database Link:	NP_114104 Entrez Gene 71062 MouseEntrez Gene 287392 RatEntrez Gene 64518 Human Q9BXF9
Background:	This gene product belongs to the tektin family of proteins. Tektins comprise a family of filament-forming proteins that are coassembled with tubulins to form ciliary and flagellar microtubules. The exact function of this gene is not known. Structural component of ciliary and flagellar microtubules. Forms filamentous polymers in the walls of ciliary and flagellar microtubules. Required for progressive sperm mobility.
Synonyms:	FLJ32828



[View online »](#)

Product images:

Predicted band size: 57 kDa. Positive control: Human fetal muscle tissue and Lncap cell lysate. Recommended dilution: 1/200-1000. (Gel: 10%SDS-PAGE Lane 1: Human fetal muscle tissue lysate Lane 2: Lncap cell lysate Lysates: 40 ug per lane Primary antibody: 1/550 dilution Secondary antibody: Goat anti Rabbit IgG - H&L (HRP) at 1/10000 dilution Exposure time: 30 minutes)