

## Product datasheet for **TA322151S**

### Cyclin B1 (CCNB1) Rabbit Polyclonal Antibody

#### Product data:

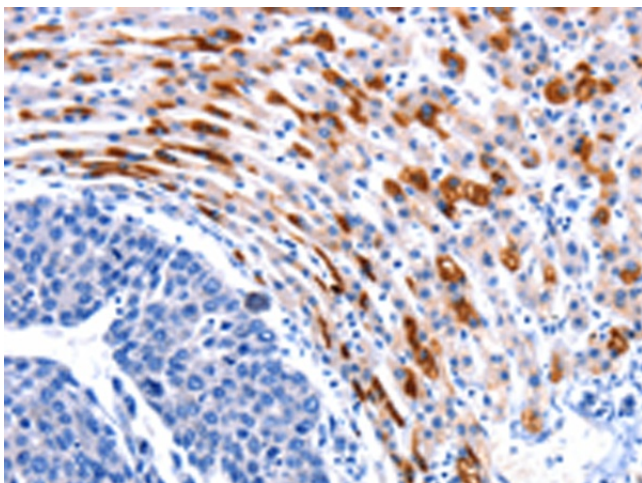
Product Type:	Primary Antibodies
Applications:	IHC
Recommended Dilution:	IHC: 25-100 Positive control: Human liver cancer Predicted cell location: Cytoplasm
Reactivity:	Human
Host:	Rabbit
Isotype:	IgG
Clonality:	Polyclonal
Immunogen:	Synthetic peptide corresponding to a region derived from 61-74 amino acids of Human cyclin B1
Formulation:	PBS pH7.3, 0.05% NaN <sub>3</sub> , 50% glycerol
Purification:	Antigen affinity purification
Conjugation:	Unconjugated
Storage:	Store at -20°C as received.
Stability:	Stable for 12 months from date of receipt.
Gene Name:	cyclin B1
Database Link:	<a href="#">NP_114172</a> <a href="#">Entrez Gene 891 Human</a> <a href="#">P14635</a>
Background:	G2/mitotic-specific cyclin-B1 is a protein that in humans is encoded by the CCNB1 gene. The protein encoded by this gene is a regulatory protein involved in mitosis. The gene product complexes with p34(cdc2) to form the maturation-promoting factor (MPF). Two alternative transcripts have been found; a constitutively expressed transcript and a cell cycle-regulated transcript; that is expressed predominantly during G2/M phase. The different transcripts result from the use of alternate transcription initiation sites.
Synonyms:	CCNB
Protein Families:	Druggable Genome, Stem cell - Pluripotency



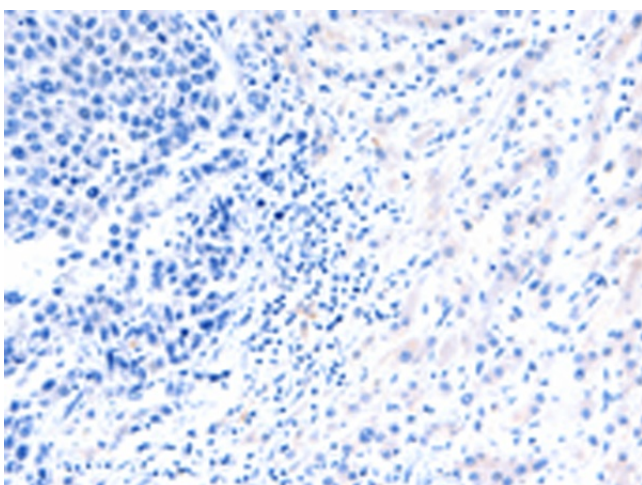
[View online »](#)

Protein Pathways: Cell cycle, Oocyte meiosis, p53 signaling pathway, Progesterone-mediated oocyte maturation

### Product images:



Immunohistochemistry of paraffin-embedded Human liver cancer tissue using [TA322151] (CCNB1 Antibody) at dilution 1/20 (Original magnification:  $\times 200$ )



Immunohistochemistry of paraffin-embedded Human liver cancer tissue using [TA322151] (CCNB1 Antibody) at dilution 1/20, treated with synthetic peptide. (Original magnification:  $\times 200$ )