

Product datasheet for **TA322151**

Cyclin B1 (CCNB1) Rabbit Polyclonal Antibody

Product data:

Product Type:	Primary Antibodies
Applications:	IHC
Recommended Dilution:	IHC: 25-100 Positive control: Human liver cancer Predicted cell location: Cytoplasm
Reactivity:	Human
Host:	Rabbit
Isotype:	IgG
Clonality:	Polyclonal
Immunogen:	Synthetic peptide corresponding to a region derived from 61-74 amino acids of Human cyclin B1
Formulation:	PBS pH7.3, 0.05% NaN ₃ , 50% glycerol
Concentration:	lot specific
Purification:	Antigen affinity purification
Conjugation:	Unconjugated
Storage:	Store at -20°C as received.
Stability:	Stable for 12 months from date of receipt.
Gene Name:	cyclin B1
Database Link:	NP_114172 Entrez Gene 891 Human P14635
Background:	G2/mitotic-specific cyclin-B1 is a protein that in humans is encoded by the CCNB1 gene. The protein encoded by this gene is a regulatory protein involved in mitosis. The gene product complexes with p34(cdc2) to form the maturation-promoting factor (MPF). Two alternative transcripts have been found; a constitutively expressed transcript and a cell cycle-regulated transcript; that is expressed predominantly during G2/M phase. The different transcripts result from the use of alternate transcription initiation sites.
Synonyms:	CCNB

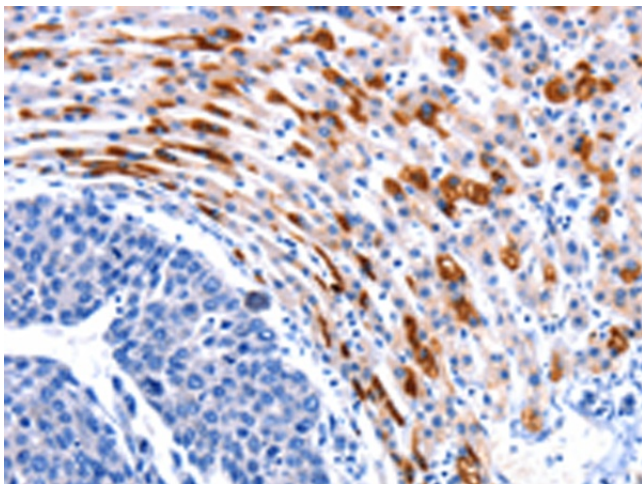


[View online »](#)

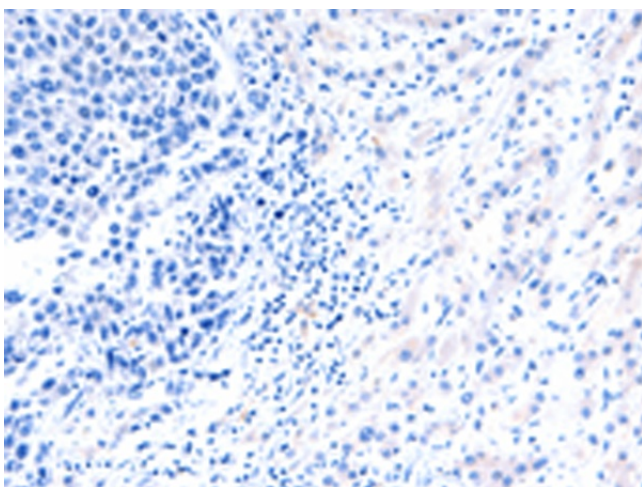
Protein Families: Druggable Genome, Stem cell - Pluripotency

Protein Pathways: Cell cycle, Oocyte meiosis, p53 signaling pathway, Progesterone-mediated oocyte maturation

Product images:



Immunohistochemistry of paraffin-embedded Human liver cancer tissue using TA322151 (CCNB1 Antibody) at dilution 1/20 (Original magnification: ×200)



Immunohistochemistry of paraffin-embedded Human liver cancer tissue using TA322151 (CCNB1 Antibody) at dilution 1/20, treated with synthetic peptide. (Original magnification: ×200)