

Product datasheet for **TA322147S**

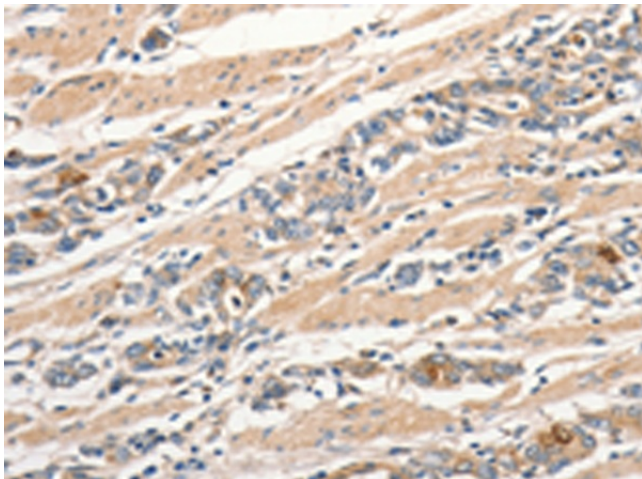
SLC41A2 Rabbit Polyclonal Antibody

Product data:

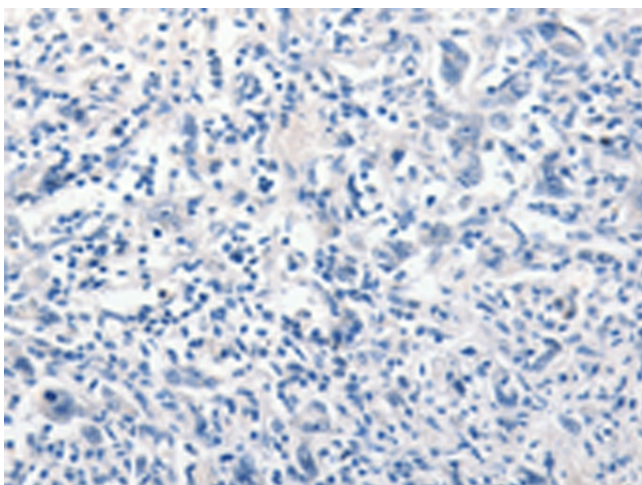
| | |
|-----------------------|--|
| Product Type: | Primary Antibodies |
| Applications: | IHC |
| Recommended Dilution: | IHC: 25-100 Positive control: Human gastric cancer Predicted cell location: Cytoplasm |
| Reactivity: | Human |
| Host: | Rabbit |
| Isotype: | IgG |
| Clonality: | Polyclonal |
| Immunogen: | Synthetic peptide corresponding to a region derived from 1-15 amino acids of Human solute carrier family 41, member 2 |
| Formulation: | PBS pH7.3, 0.05% NaN ₃ , 50% glycerol |
| Purification: | Antigen affinity purification |
| Conjugation: | Unconjugated |
| Storage: | Store at -20°C as received. |
| Stability: | Stable for 12 months from date of receipt. |
| Gene Name: | solute carrier family 41 member 2 |
| Database Link: | NP_115524 Entrez Gene 84102 Human Q96JW4 |
| Background: | This gene belongs to the SLC41A transporter family. It acts as a plasma-membrane magnesium transporter. SLC41A2 functions as a plasma-membrane Mg ²⁺ transporter in vertebrate cells. |
| Synonyms: | SLC41A1-L1 |
| Protein Families: | Transmembrane |



[View online »](#)

Product images:

Immunohistochemistry of paraffin-embedded Human gastric cancer tissue using [TA322147] (SLC41A2 Antibody) at dilution 1/30 (Original magnification: $\times 200$)



Immunohistochemistry of paraffin-embedded Human gastric cancer tissue using [TA322147] (SLC41A2 Antibody) at dilution 1/30, treated with synthetic peptide. (Original magnification: $\times 200$)