

Product datasheet for **TA322147**

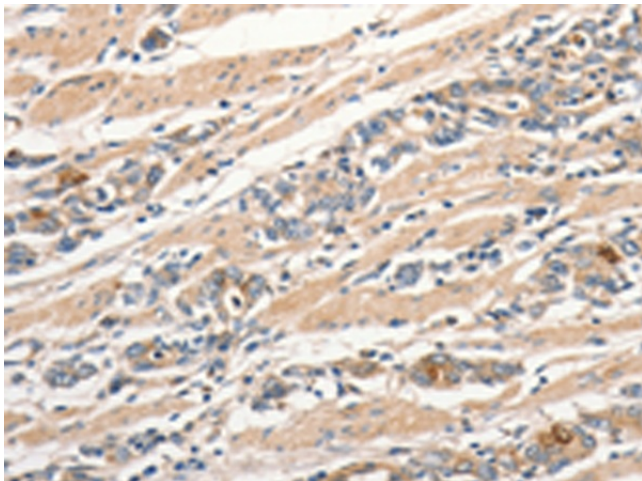
SLC41A2 Rabbit Polyclonal Antibody

Product data:

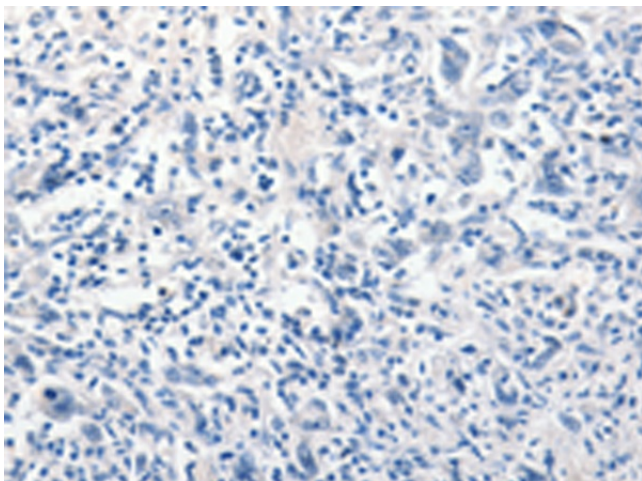
Product Type:	Primary Antibodies
Applications:	IHC
Recommended Dilution:	IHC: 25-100 Positive control: Human gastric cancer Predicted cell location: Cytoplasm
Reactivity:	Human
Host:	Rabbit
Isotype:	IgG
Clonality:	Polyclonal
Immunogen:	Synthetic peptide corresponding to a region derived from 1-15 amino acids of Human solute carrier family 41, member 2
Formulation:	PBS pH7.3, 0.05% NaN ₃ , 50% glycerol
Concentration:	lot specific
Purification:	Antigen affinity purification
Conjugation:	Unconjugated
Storage:	Store at -20°C as received.
Stability:	Stable for 12 months from date of receipt.
Gene Name:	solute carrier family 41 member 2
Database Link:	NP_115524 Entrez Gene 84102 Human Q96JW4
Background:	This gene belongs to the SLC41A transporter family. It acts as a plasma-membrane magnesium transporter. SLC41A2 functions as a plasma-membrane Mg ²⁺ transporter in vertebrate cells.
Synonyms:	SLC41A1-L1
Protein Families:	Transmembrane



[View online »](#)

Product images:

Immunohistochemistry of paraffin-embedded Human gastric cancer tissue using TA322147 (SLC41A2 Antibody) at dilution 1/30 (Original magnification: $\times 200$)



Immunohistochemistry of paraffin-embedded Human gastric cancer tissue using TA322147 (SLC41A2 Antibody) at dilution 1/30, treated with synthetic peptide. (Original magnification: $\times 200$)