

Product datasheet for **TA322146**

ACAD11 Rabbit Polyclonal Antibody

Product data:

Product Type:	Primary Antibodies
Applications:	IHC, WB
Recommended Dilution:	WB: 500-2000 WB positive control: Mouse kidney tissue, Mouse heart tissue lysates IHC: 50-200 Positive control: Human esophagus cancer Predicted cell location: Cytoplasm and Cell membrane
Reactivity:	Human, Mouse, Rat
Host:	Rabbit
Isotype:	IgG
Clonality:	Polyclonal
Immunogen:	Fusion protein corresponding to a region derived from 121-400 amino acids of human acyl-CoA dehydrogenase family, member 11
Formulation:	PBS pH7.3, 0.05% NaN ₃ , 50% glycerol
Concentration:	lot specific
Purification:	Antigen affinity purification
Conjugation:	Unconjugated
Storage:	Store at -20°C as received.
Stability:	Stable for 12 months from date of receipt.
Predicted Protein Size:	87 kDa
Gene Name:	acyl-CoA dehydrogenase family member 11
Database Link:	NP_115545 Entrez Gene 102632 Mouse Entrez Gene 315973 Rat Entrez Gene 84129 Human Q709F0



[View online »](#)

Background:

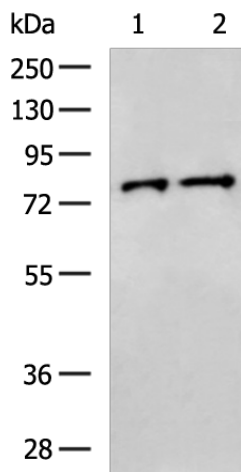
The deduced full-length ACAD11 protein contains an N-terminal aminoglycoside phosphotransferase domain, followed by a mitochondria localization signal and ACAD N-terminal, middle, and C-terminal domains. It also has a glycosylation site and a C-terminal peroxisome-targeting signal. The ACAD domain contains a catalytic aspartate rather than the catalytic glutamate found in most other ACADs. Real-time RT-PCR detected ACAD11 expression in all tissues examined, with highest expression in adult brain, followed by heart, liver, spinal cord, and kidney. Western blot analysis of fractionated human cerebellum and kidney revealed that ACAD11 associated with mitochondrial membranes, but not mitochondrial matrix. Immunohistochemical analysis showed that ACAD11 colocalized with a mitochondrial marker in human neuroblastoma cells.

Synonyms:

ACAD-11

Protein Families:

Druggable Genome

Product images:

Gel: 8%SDS-PAGE

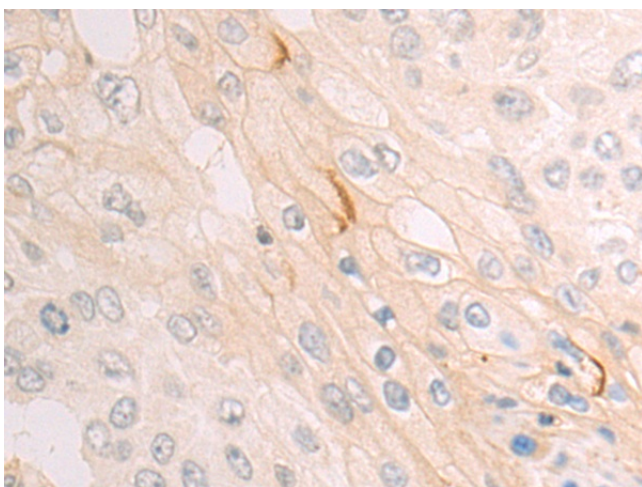
Lysate: 40 µg

Lane 1-2: Mouse kidney tissue

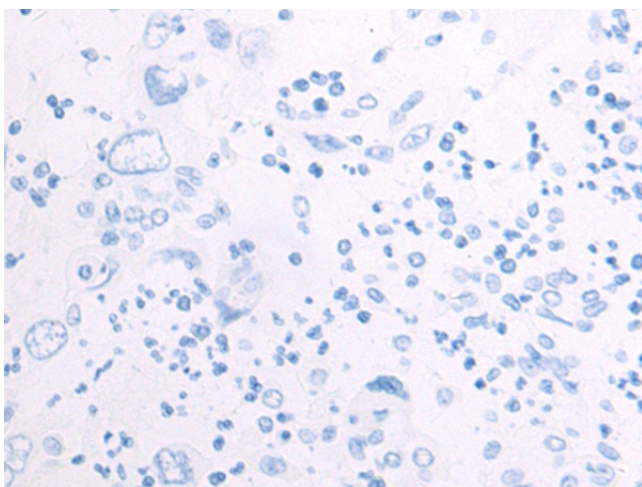
Mouse heart tissue lysates

Primary antibody: TA322146 (ACAD11 Antibody)
at dilution 1/800Secondary antibody: Goat anti rabbit IgG at
1/5000 dilution

Exposure time: 1 minute



Immunohistochemistry of paraffin-embedded Human esophagus cancer tissue using TA322146 (ACAD11 Antibody) at dilution 1/55 (Original magnification: $\times 200$)



Immunohistochemistry of paraffin-embedded Human esophagus cancer tissue using TA322146 (ACAD11 Antibody) at dilution 1/55, treated with fusion protein. (Original magnification: $\times 200$)