

Product datasheet for **TA322144**

ZNRF1 Rabbit Polyclonal Antibody

Product data:

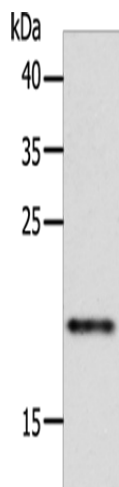
Product Type:	Primary Antibodies
Applications:	WB
Recommended Dilution:	WB: 200-1000 WB positive control: Hela cells
Reactivity:	Human, Mouse
Host:	Rabbit
Isotype:	IgG
Clonality:	Polyclonal
Immunogen:	Synthetic peptide corresponding to a region derived from 65-86 amino acids of human zinc and ring finger 1, E3 ubiquitin protein ligase
Formulation:	PBS pH7.3, 0.05% NaN ₃ , 50% glycerol
Concentration:	lot specific
Purification:	Antigen affinity purification
Conjugation:	Unconjugated
Storage:	Store at -20°C as received.
Stability:	Stable for 12 months from date of receipt.
Predicted Protein Size:	24 kDa
Gene Name:	zinc and ring finger 1, E3 ubiquitin protein ligase
Database Link:	NP_115644 Entrez Gene 170737 Mouse Entrez Gene 84937 Human Q8ND25
Background:	This gene encodes an E3 ubiquitin-protein ligase that plays a role in neural-cell differentiation. Overexpression of this gene causes neurite-like elongation. The encoded protein contains both a zinc finger and a RING finger motif and is localized in the endosome/lysosome compartment; indicating that it may be involved in ubiquitin-mediated protein modification; and in synaptic vesicle membranes in neurons.
Synonyms:	NIN283



[View online »](#)

Protein Families: Druggable Genome

Product images:



Gel: 10%SDS-PAGE
Lysate: 30 μ g
Lane: HeLa cells
Primary antibody: TA322144 (ZNRF1 Antibody) at dilution 1/500
Secondary antibody: Goat anti rabbit IgG at 1/8000 dilution
Exposure time: 10 seconds