

Product datasheet for **TA322142S**

MCM8 Rabbit Polyclonal Antibody

Product data:

Product Type:	Primary Antibodies
Applications:	WB
Recommended Dilution:	WB: 200-1000 WB positive control: Jurkat cells
Reactivity:	Human, Mouse, Rat
Host:	Rabbit
Isotype:	IgG
Clonality:	Polyclonal
Immunogen:	Fusion protein corresponding to C terminal 300 amino acids of human minichromosome maintenance complex component 8
Formulation:	PBS pH7.3, 0.05% NaN ₃ , 50% glycerol
Purification:	Antigen affinity purification
Conjugation:	Unconjugated
Storage:	Store at -20°C as received.
Stability:	Stable for 12 months from date of receipt.
Predicted Protein Size:	94 kDa
Gene Name:	minichromosome maintenance 8 homologous recombination repair factor
Database Link:	NP_115874 Entrez Gene 66634 Mouse Entrez Gene 296178 Rat Entrez Gene 84515 Human Q9UJA3



[View online »](#)

Background:

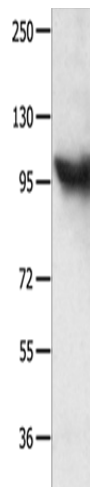
The protein encoded by this gene is one of the highly conserved mini-chromosome maintenance proteins (MCM) that are essential for the initiation of eukaryotic genome replication. The hexameric protein complex formed by the MCM proteins is a key component of the pre-replication complex (pre_RC) and may be involved in the formation of replication forks and in the recruitment of other DNA replication related proteins. This protein contains the central domain that is conserved among the MCM proteins. This protein has been shown to co-immunoprecipitate with MCM4; 6 and 7; which suggests that it may interact with other MCM proteins and play a role in DNA replication. Alternatively spliced transcript variants encoding distinct isoforms have been described.

Synonyms:

C20orf154; dj967N21.5; POF10

Protein Families:

Transcription Factors

Product images:

Gel: 10%SDS-PAGE

Lysate: 40 µg

Lane: Jurkat cells

Primary antibody: [TA322142] (MCM8 Antibody)
at dilution 1/300

Secondary antibody: Goat anti rabbit IgG at
1/8000 dilution

Exposure time: 1 minute