

## Product datasheet for **TA322135S**

### **MURF1 (TRIM63) Rabbit Polyclonal Antibody**

#### **Product data:**

<b>Product Type:</b>	Primary Antibodies
<b>Applications:</b>	IHC, WB
<b>Recommended Dilution:</b>	WB: 500-2000 WB positive control: Rat skeletal muscle tissue lysate IHC: 50-200 Positive control: Human colorectal cancer Predicted cell location: Nucleus
<b>Reactivity:</b>	Human, Rat
<b>Host:</b>	Rabbit
<b>Isotype:</b>	IgG
<b>Clonality:</b>	Polyclonal
<b>Immunogen:</b>	Synthetic peptide peptide corresponding to a region derived from 2-14 amino acids of human tripartite motif containing 63, E3 ubiquitin protein ligase
<b>Formulation:</b>	PBS pH7.3, 0.05% NaN <sub>3</sub> , 50% glycerol
<b>Purification:</b>	Antigen affinity purification
<b>Conjugation:</b>	Unconjugated
<b>Storage:</b>	Store at -20°C as received.
<b>Stability:</b>	Stable for 12 months from date of receipt.
<b>Predicted Protein Size:</b>	40 kDa
<b>Gene Name:</b>	tripartite motif containing 63
<b>Database Link:</b>	<a href="#">NP_115977</a> <a href="#">Entrez Gene 140939 Rat</a> <a href="#">Entrez Gene 84676 Human</a> <a href="#">Q969Q1</a>

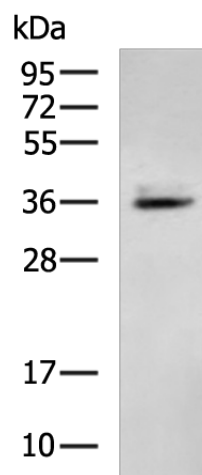
**Background:** This gene encodes a member of the RING zinc finger protein family found in striated muscle and iris. The product of this gene is an E3 ubiquitin ligase that localizes to the Z-line and M-line lattices of myofibrils. This protein plays an important role in the atrophy of skeletal and cardiac muscle and is required for the degradation of myosin heavy chain proteins; myosin light chain; myosin binding protein; and for muscle-type creatine kinase.



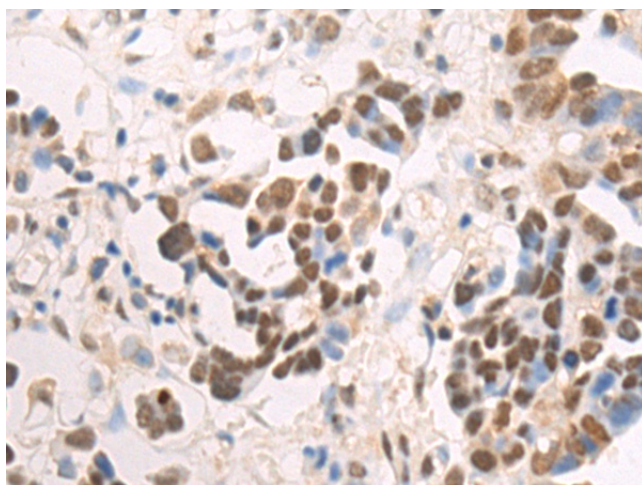
[View online »](#)

Synonyms: IRF; MURF1; MURF2; RNF28; SMRZ

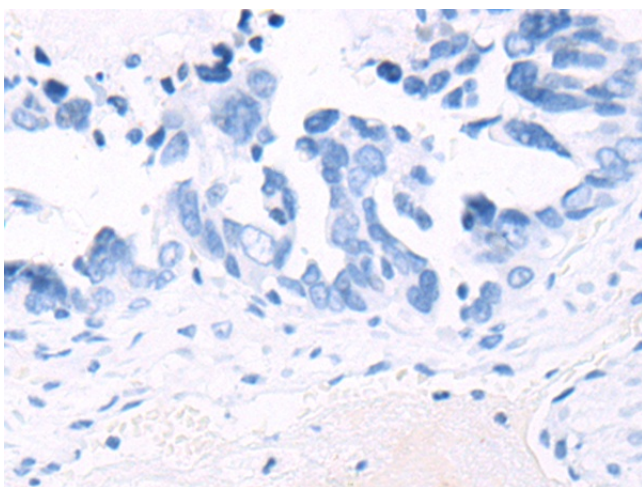
### Product images:



Gel: 12%SDS-PAGE  
Lysate: 40 µg  
Lane: Rat skeletal muscle tissue lysate  
Primary antibody: [TA322135] (TRIM63 Antibody) at dilution 1/800  
Secondary antibody: Goat anti rabbit IgG at 1/5000 dilution  
Exposure time: 1 minute



Immunohistochemistry of paraffin-embedded Human colorectal cancer tissue using [TA322135] (TRIM63 Antibody) at dilution 1/50 (Original magnification: ×200)



Immunohistochemistry of paraffin-embedded Human colorectal cancer tissue using [TA322135] (TRIM63 Antibody) at dilution 1/50, treated with synthetic peptide. (Original magnification: ×200)