

Product datasheet for **TA322135**

MURF1 (TRIM63) Rabbit Polyclonal Antibody

Product data:

Product Type:	Primary Antibodies
Applications:	IHC, WB
Recommended Dilution:	WB: 500-2000 WB positive control: Rat skeletal muscle tissue lysate IHC: 50-200 Positive control: Human colorectal cancer Predicted cell location: Nucleus
Reactivity:	Human, Rat
Host:	Rabbit
Isotype:	IgG
Clonality:	Polyclonal
Immunogen:	Synthetic peptide peptide corresponding to a region derived from 2-14 amino acids of human tripartite motif containing 63, E3 ubiquitin protein ligase
Formulation:	PBS pH7.3, 0.05% NaN ₃ , 50% glycerol
Concentration:	lot specific
Purification:	Antigen affinity purification
Conjugation:	Unconjugated
Storage:	Store at -20°C as received.
Stability:	Stable for 12 months from date of receipt.
Predicted Protein Size:	40 kDa
Gene Name:	tripartite motif containing 63
Database Link:	NP_115977 Entrez Gene 140939 Rat Entrez Gene 84676 Human Q969Q1



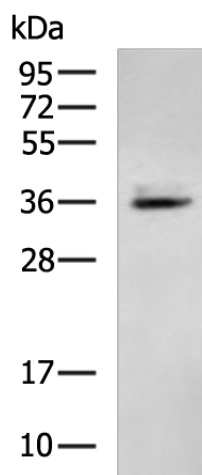
[View online »](#)

Background:

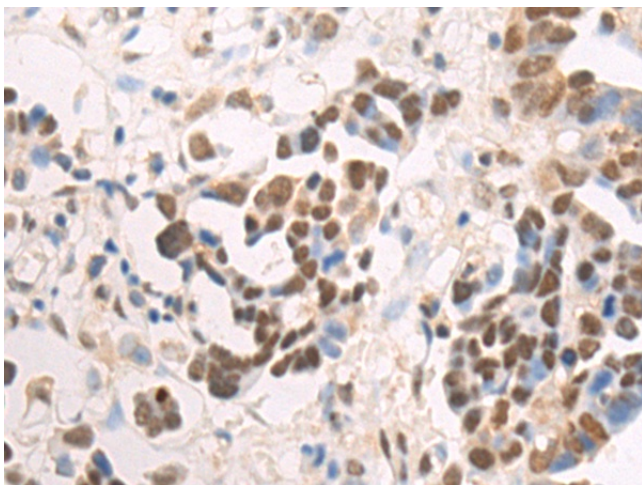
This gene encodes a member of the RING zinc finger protein family found in striated muscle and iris. The product of this gene is an E3 ubiquitin ligase that localizes to the Z-line and M-line lattices of myofibrils. This protein plays an important role in the atrophy of skeletal and cardiac muscle and is required for the degradation of myosin heavy chain proteins; myosin light chain; myosin binding protein; and for muscle-type creatine kinase.

Synonyms:

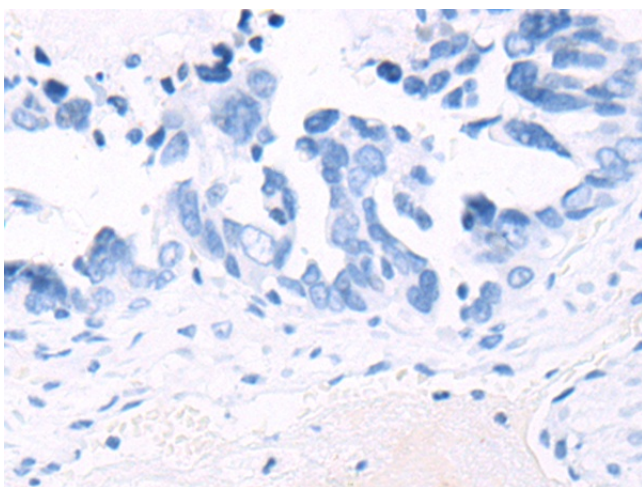
IRF; MURF1; MURF2; RNF28; SMRZ

Product images:

Gel: 12%SDS-PAGE
Lysate: 40 µg
Lane: Rat skeletal muscle tissue lysate
Primary antibody: TA322135 (TRIM63 Antibody) at dilution 1/800
Secondary antibody: Goat anti rabbit IgG at 1/5000 dilution
Exposure time: 1 minute



Immunohistochemistry of paraffin-embedded Human colorectal cancer tissue using TA322135 (TRIM63 Antibody) at dilution 1/50 (Original magnification: ×200)



Immunohistochemistry of paraffin-embedded Human colorectal cancer tissue using TA322135 (TRIM63 Antibody) at dilution 1/50, treated with synthetic peptide. (Original magnification: $\times 200$)