

## Product datasheet for **TA322134**

### **MURF1 (TRIM63) Rabbit Polyclonal Antibody**

#### **Product data:**

Product Type:	Primary Antibodies
Applications:	IHC, WB
Recommended Dilution:	WB: 1000-5000 WB positive control: NIH/3T3 cells and human fetal muscle tissue IHC: 50-200 Positive control: Human cervical cancer Predicted cell location: cytoplasm, Nucleus
Reactivity:	Human, Mouse
Host:	Rabbit
Isotype:	IgG
Clonality:	Polyclonal
Immunogen:	Synthetic peptide peptide corresponding to a region derived from 2-14 amino acids of human tripartite motif containing 63, E3 ubiquitin protein ligase
Formulation:	PBS pH7.3, 0.05% NaN <sub>3</sub> , 50% glycerol
Concentration:	lot specific
Purification:	Antigen affinity purification
Conjugation:	Unconjugated
Storage:	Store at -20°C as received.
Stability:	Stable for 12 months from date of receipt.
Predicted Protein Size:	40 kDa
Gene Name:	tripartite motif containing 63
Database Link:	<a href="#">NP_115977</a> <a href="#">Entrez Gene 433766 Mouse</a> <a href="#">Entrez Gene 84676 Human</a> <a href="#">Q969Q1</a>



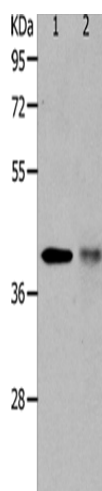
[View online »](#)

**Background:**

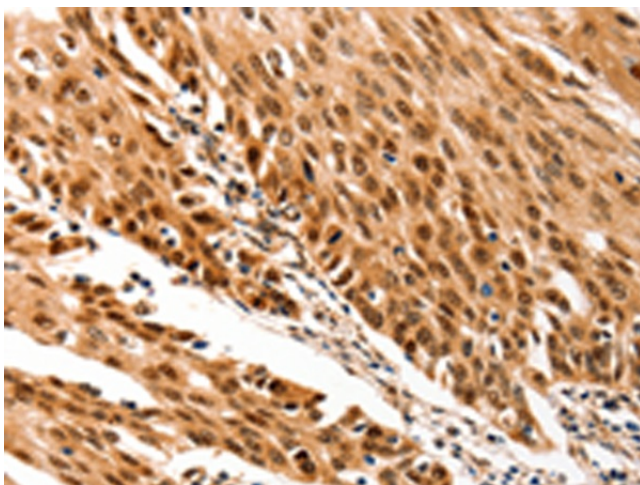
This gene encodes a member of the RING zinc finger protein family found in striated muscle and iris. The product of this gene is an E3 ubiquitin ligase that localizes to the Z-line and M-line lattices of myofibrils. This protein plays an important role in the atrophy of skeletal and cardiac muscle and is required for the degradation of myosin heavy chain proteins; myosin light chain; myosin binding protein; and for muscle-type creatine kinase.

**Synonyms:**

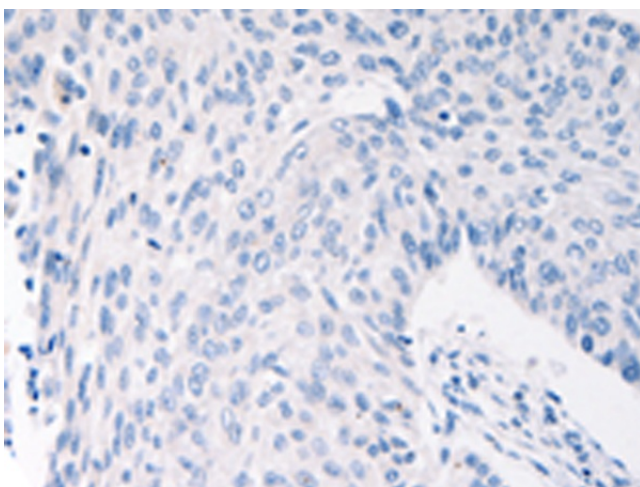
IRF; MURF1; MURF2; RNF28; SMRZ

**Product images:**

Gel: 10%SDS-PAGE  
Lysate: 40  $\mu$ g  
Lane 1-2: NIH/3T3 cells  
human fetal muscle tissue  
Primary antibody: TA322134 (TRIM63 Antibody)  
at dilution 1/1200  
Secondary antibody: Goat anti rabbit IgG at  
1/8000 dilution  
Exposure time: 50 seconds



Immunohistochemistry of paraffin-embedded  
Human cervical cancer tissue using TA322134  
(TRIM63 Antibody) at dilution 1/70 (Original  
magnification:  $\times$ 200)



Immunohistochemistry of paraffin-embedded Human cervical cancer tissue using TA322134 (TRIM63 Antibody) at dilution 1/70, treated with synthetic peptide. (Original magnification:  $\times 200$ )