

## Product datasheet for **TA322131**

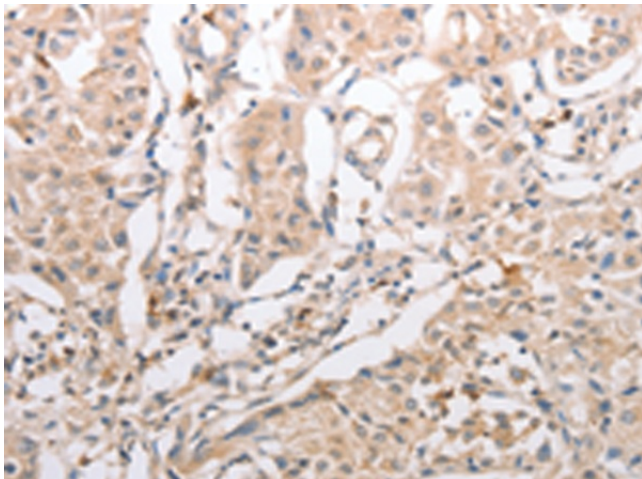
### alpha Internexin (INA) Rabbit Polyclonal Antibody

#### Product data:

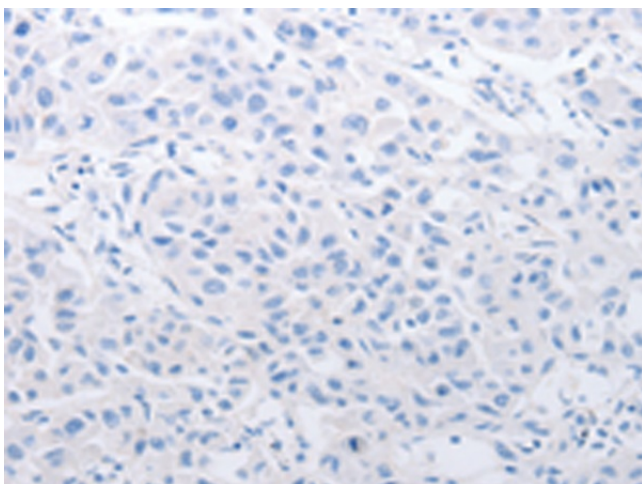
Product Type:	Primary Antibodies
Applications:	IHC
Recommended Dilution:	IHC: 25-100 Positive control: Human lung cancer Predicted cell location: Cytoplasm
Reactivity:	Human
Host:	Rabbit
Isotype:	IgG
Clonality:	Polyclonal
Immunogen:	Synthetic peptide corresponding to a region derived from 486-499 amino acids of Human internexin neuronal intermediate filament protein, alpha
Formulation:	PBS pH7.3, 0.05% NaN <sub>3</sub> , 50% glycerol
Concentration:	lot specific
Purification:	Antigen affinity purification
Conjugation:	Unconjugated
Storage:	Store at -20°C as received.
Stability:	Stable for 12 months from date of receipt.
Gene Name:	internexin neuronal intermediate filament protein alpha
Database Link:	<a href="#">NP_116116</a> <a href="#">Entrez Gene 9118 Human</a> <a href="#">Q16352</a>
Background:	Neurofilaments are type IV intermediate filament heteropolymers composed of light; medium; and heavy chains. Neurofilaments comprise the axoskeleton and they functionally maintain the neuronal caliber. They may also play a role in intracellular transport to axons and dendrites. This gene is a member of the intermediate filament family and is involved in the morphogenesis of neurons.
Synonyms:	NEF5; NF-66; TXBP-1



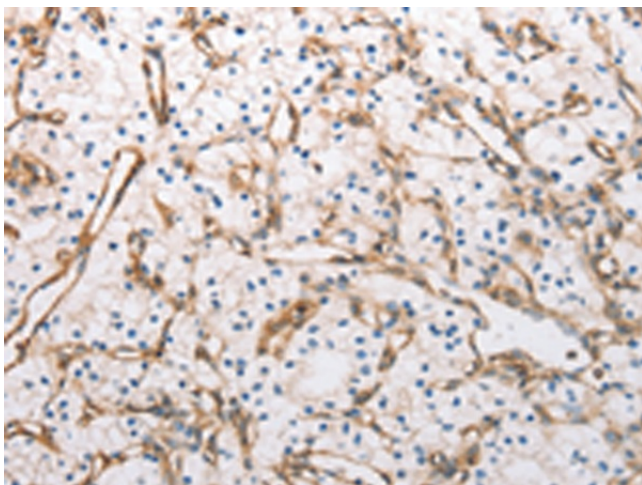
[View online »](#)

**Product images:**

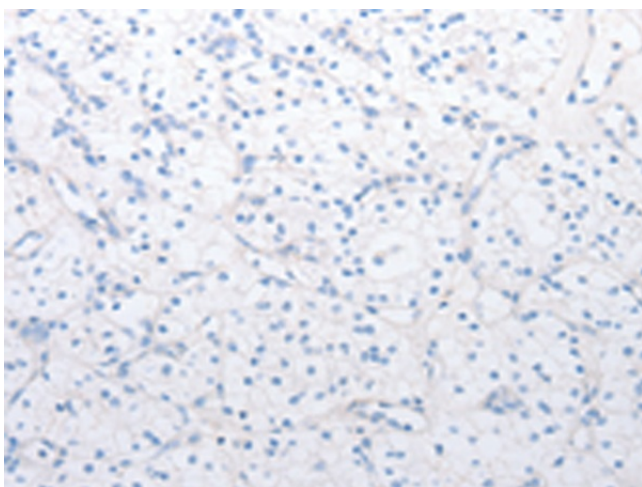
Immunohistochemistry of paraffin-embedded Human lung cancer tissue using TA322131 (INA Antibody) at dilution 1/30 (Original magnification: ×200)



Immunohistochemistry of paraffin-embedded Human lung cancer tissue using TA322131 (INA Antibody) at dilution 1/30, treated with synthetic peptide. (Original magnification: ×200)



Immunohistochemistry of paraffin-embedded Human renal cancer tissue using TA322131 (INA Antibody) at dilution 1/30 (Original magnification: ×200)



Immunohistochemistry of paraffin-embedded Human renal cancer tissue using TA322131 (INA Antibody) at dilution 1/30, treated with synthetic peptide. (Original magnification: ×200)