

Product datasheet for **TA322126**

Macrophage inflammatory protein 5 (CCL15) Rabbit Polyclonal Antibody

Product data:

Product Type:	Primary Antibodies
Applications:	IHC
Recommended Dilution:	IHC: 25-100 Positive control: Human breast cancer Predicted cell location: Cytoplasm
Reactivity:	Human
Host:	Rabbit
Isotype:	IgG
Clonality:	Polyclonal
Immunogen:	Synthetic peptide corresponding to a region derived from 94-103 amino acids of Human chemokine (C-C motif) ligand 15
Formulation:	PBS pH7.3, 0.05% NaN ₃ , 50% glycerol
Concentration:	lot specific
Purification:	Antigen affinity purification
Conjugation:	Unconjugated
Storage:	Store at -20°C as received.
Stability:	Stable for 12 months from date of receipt.
Gene Name:	C-C motif chemokine ligand 15
Database Link:	NP_004158 Entrez Gene 6359 Human Q16663
Background:	This gene; chemokine (C-C motif) ligand 15; is one of several CC cytokine genes clustered on 17q11.2. The CC cytokines are secreted proteins characterized by two adjacent cysteines. The cytokine encoded by this gene is chemotactic for T cells and monocytes and induces N-acetyl-beta-D-glucosaminidase release in monocytes. It induces changes in intracellular calcium concentration in monocytes and is thought to act through the CCR1 receptor. Read-through transcripts are expressed that include exons from the downstream cytokine gene; chemokine (C-C motif) ligand 14; and are represented as GeneID: 348249.



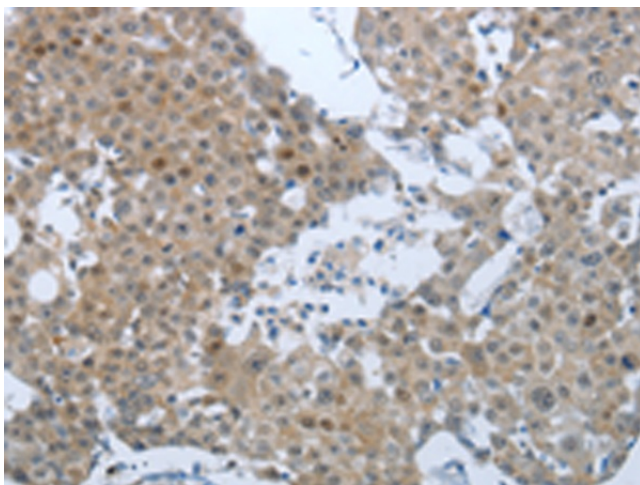
[View online »](#)

Synonyms: HCC-2; HMRP-2B; Lkn-1; LKN1; MIP-1d; MIP-5; NCC-3; NCC3; SCYA15; SCYL3; SY15

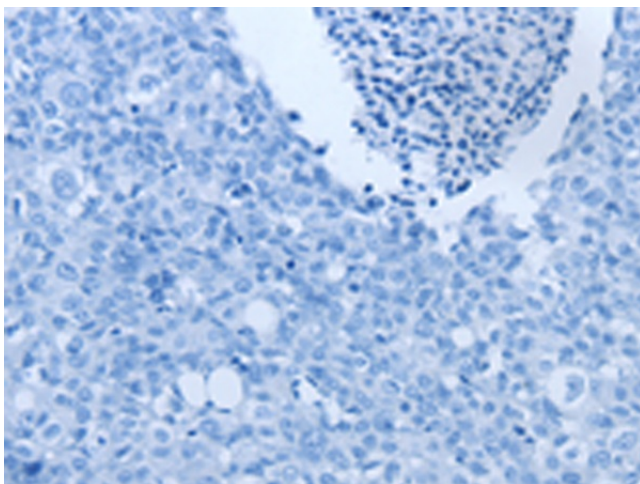
Protein Families: Druggable Genome, Secreted Protein, Transmembrane

Protein Pathways: Chemokine signaling pathway, Cytokine-cytokine receptor interaction

Product images:



Immunohistochemistry of paraffin-embedded Human breast cancer tissue using TA322126 (CCL15 Antibody) at dilution 1/25 (Original magnification: ×200)



Immunohistochemistry of paraffin-embedded Human breast cancer tissue using TA322126 (CCL15 Antibody) at dilution 1/25, treated with synthetic peptide. (Original magnification: ×200)