

Product datasheet for **TA322125**

Caspase 10 (CASP10) Rabbit Polyclonal Antibody

Product data:

Product Type:	Primary Antibodies
Applications:	IHC, WB
Recommended Dilution:	WB: 500-2000 WB positive control: Human liver cancer tissue IHC: 25-100 Positive control: Human brain Predicted cell location: Cytoplasm
Reactivity:	Human
Host:	Rabbit
Isotype:	IgG
Clonality:	Polyclonal
Immunogen:	Synthetic peptide corresponding to a region derived from 485-499 amino acids of Human caspase 10, apoptosis-related cysteine peptidase
Formulation:	PBS pH7.3, 0.05% NaN ₃ , 50% glycerol
Concentration:	lot specific
Purification:	Antigen affinity purification
Conjugation:	Unconjugated
Storage:	Store at -20°C as received.
Stability:	Stable for 12 months from date of receipt.
Predicted Protein Size:	54 kDa
Gene Name:	caspase 10
Database Link:	NP_116759 Entrez Gene 843 Human Q92851



[View online »](#)

Background:

This gene encodes a protein which is a member of the cysteine-aspartic acid protease (caspase) family. Sequential activation of caspases plays a central role in the execution-phase of cell apoptosis. Caspases exist as inactive proenzymes which undergo proteolytic processing at conserved aspartic residues to produce two subunits; large and small; that dimerize to form the active enzyme. This protein cleaves and activates caspases 3 and 7; and the protein itself is processed by caspase 8. Mutations in this gene are associated with type IIA autoimmune lymphoproliferative syndrome; non-Hodgkin lymphoma and gastric cancer. Alternatively spliced transcript variants encoding different isoforms have been described for this gene.

Synonyms:

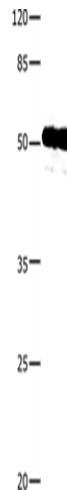
ALPS2; FLICE2; MCH4

Protein Families:

Druggable Genome, Protease

Protein Pathways:

Apoptosis, RIG-I-like receptor signaling pathway

Product images:

Gel: 10%SDS-PAGE

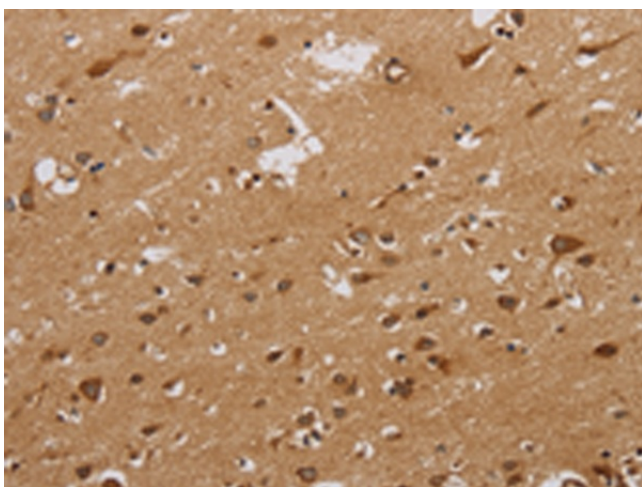
Lysate: 30 µg

Lane: Human liver cancer tissue

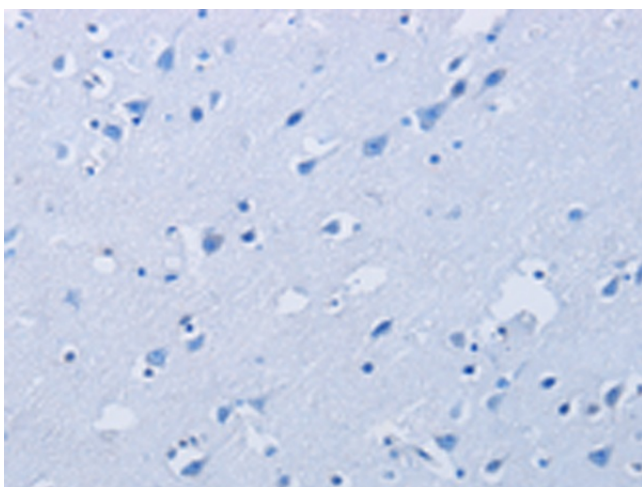
Primary antibody: TA322125 (CASP10 Antibody)
at dilution 1/300

Secondary antibody: Goat anti rabbit IgG at
1/8000 dilution

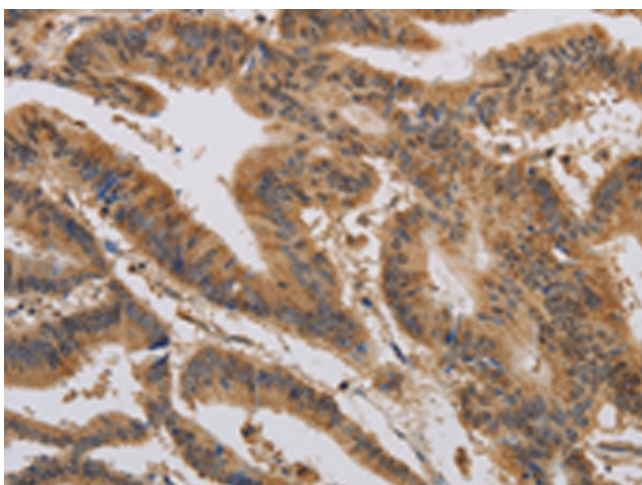
Exposure time: 20 minutes



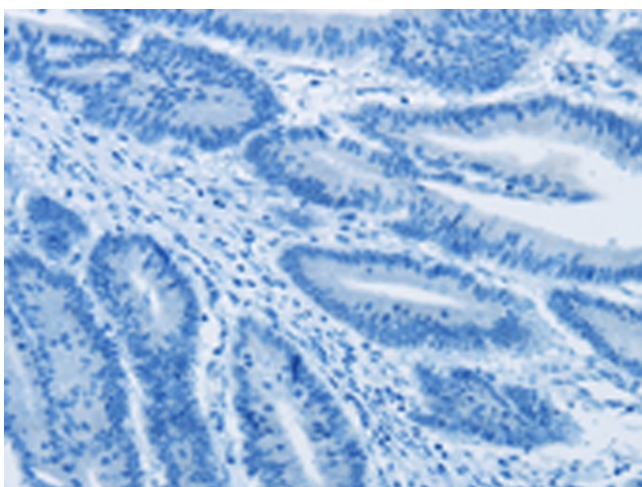
Immunohistochemistry of paraffin-embedded Human brain tissue using TA322125 (CASP10 Antibody) at dilution 1/20 (Original magnification: $\times 200$)



Immunohistochemistry of paraffin-embedded Human brain tissue using TA322125 (CASP10 Antibody) at dilution 1/20, treated with synthetic peptide. (Original magnification: $\times 200$)



Immunohistochemistry of paraffin-embedded Human colon cancer tissue using TA322125 (CASP10 Antibody) at dilution 1/20 (Original magnification: $\times 200$)



Immunohistochemistry of paraffin-embedded Human colon cancer tissue using TA322125 (CASP10 Antibody) at dilution 1/20, treated with synthetic peptide. (Original magnification: $\times 200$)