

## Product datasheet for **TA322120S**

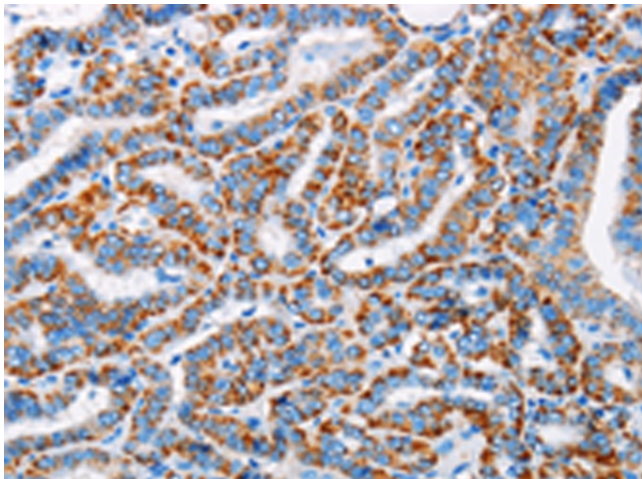
### ALG2 Rabbit Polyclonal Antibody

#### Product data:

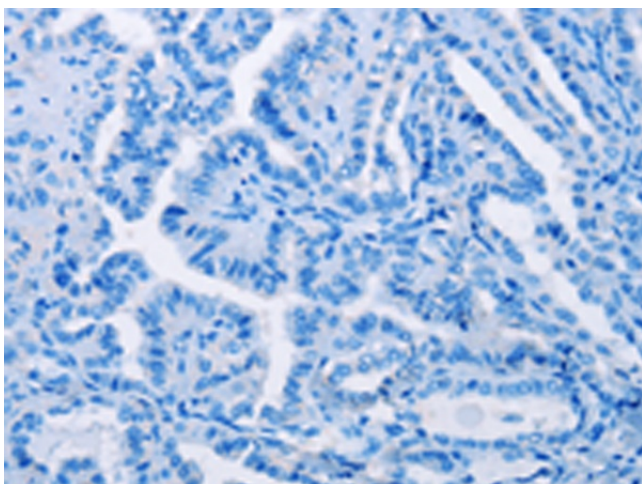
Product Type:	Primary Antibodies
Applications:	IHC
Recommended Dilution:	IHC: 25-100 Positive control: Human thyroid cancer Predicted cell location: Cytoplasm
Reactivity:	Human, Mouse
Host:	Rabbit
Isotype:	IgG
Clonality:	Polyclonal
Immunogen:	Fusion protein corresponding to C terminal 300 amino acids of human ALG2, alpha-1,3/1,6-mannosyltransferase
Formulation:	PBS pH7.3, 0.05% NaN <sub>3</sub> , 50% glycerol
Purification:	Antigen affinity purification
Conjugation:	Unconjugated
Storage:	Store at -20°C as received.
Stability:	Stable for 12 months from date of receipt.
Gene Name:	ALG2, alpha-1,3/1,6-mannosyltransferase
Database Link:	<a href="#">NP_149078</a> <a href="#">Entrez Gene 56737 Mouse</a> <a href="#">Entrez Gene 85365 Human</a> <a href="#">Q9H553</a>
Background:	This gene encodes a member of the glycosyltransferase 1 family. The encoded protein acts as an alpha 1,3 mannosyltransferase, mannosylating Man(2)GlcNAc(2)-dolichol diphosphate and Man(1)GlcNAc(2)-dolichol diphosphate to form Man(3)GlcNAc(2)-dolichol diphosphate. Defects in this gene have been associated with congenital disorder of glycosylation type I <sub>h</sub> (CDG-I <sub>h</sub> ). Alternative splicing results in multiple transcript variants.
Synonyms:	CDGII; hALPG2; NET38
Protein Pathways:	Metabolic pathways, N-Glycan biosynthesis



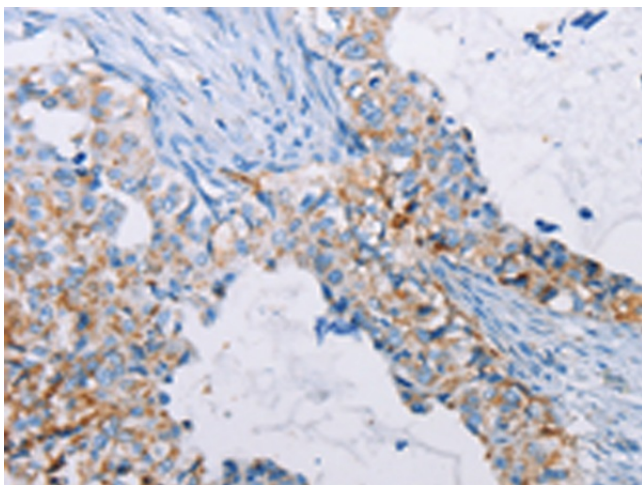
[View online »](#)

**Product images:**

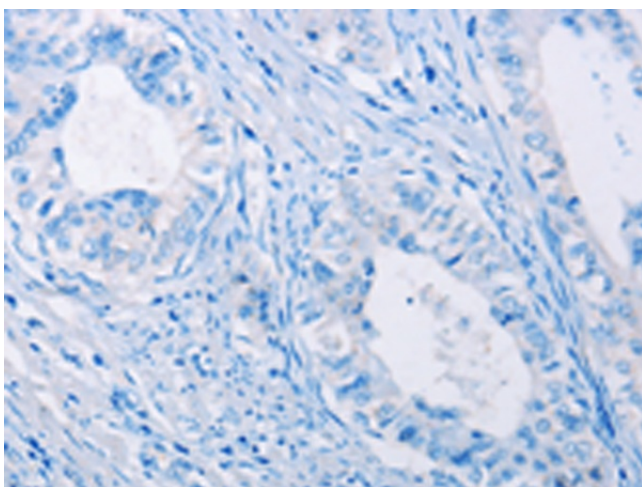
Immunohistochemistry of paraffin-embedded Human thyroid cancer tissue using [TA322120] (ALG2 Antibody) at dilution 1/20 (Original magnification: x200)



Immunohistochemistry of paraffin-embedded Human thyroid cancer tissue using [TA322120] (ALG2 Antibody) at dilution 1/20, treated with fusion protein. (Original magnification: x200)



Immunohistochemistry of paraffin-embedded Human cervical cancer tissue using [TA322120] (ALG2 Antibody) at dilution 1/20 (Original magnification:  $\times 200$ )



Immunohistochemistry of paraffin-embedded Human cervical cancer tissue using [TA322120] (ALG2 Antibody) at dilution 1/20, treated with fusion protein. (Original magnification:  $\times 200$ )