

## Product datasheet for **TA322119S**

### FGF8 Rabbit Polyclonal Antibody

#### Product data:

Product Type:	Primary Antibodies
Applications:	WB
Recommended Dilution:	WB: 200-1000 WB positive control: RAW264.7 cell lysate
Reactivity:	Human, Mouse
Host:	Rabbit
Isotype:	IgG
Clonality:	Polyclonal
Immunogen:	Synthetic peptide corresponding to a region derived from 230-244 amino acids of Human Fibroblast growth factor 8
Formulation:	PBS pH7.3, 0.05% NaN <sub>3</sub> , 50% glycerol
Purification:	Antigen affinity purification
Conjugation:	Unconjugated
Storage:	Store at -20°C as received.
Stability:	Stable for 12 months from date of receipt.
Predicted Protein Size:	27 kDa
Gene Name:	fibroblast growth factor 8
Database Link:	<a href="#">NP_149353</a> <a href="#">Entrez Gene 14179 Mouse</a> <a href="#">Entrez Gene 2253 Human</a> <a href="#">P55075</a>



[View online »](#)

**Background:**

The protein encoded by this gene is a member of the fibroblast growth factor (FGF) family. FGF family members possess broad mitogenic and cell survival activities; and are involved in a variety of biological processes; including embryonic development; cell growth; morphogenesis; tissue repair; tumor growth and invasion. This protein is known to be a factor that supports androgen and anchorage independent growth of mammary tumor cells. Overexpression of this gene has been shown to increase tumor growth and angiogenesis. The adult expression of this gene is restricted to testes and ovaries. Temporal and spatial pattern of this gene expression suggests its function as an embryonic epithelial factor. Studies of the mouse and chick homologs revealed roles in midbrain and limb development; organogenesis; embryo gastrulation and left-right axis determination. The alternative splicing of this gene results in four transcript variants.

**Synonyms:**

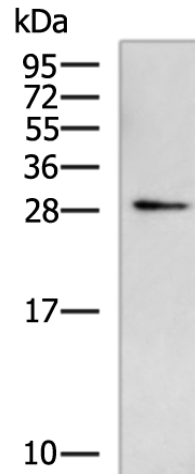
AIGF; FGF-8; HBGF-8; HH6; KAL6

**Protein Families:**

Druggable Genome, Secreted Protein

**Protein Pathways:**

MAPK signaling pathway, Melanoma, Pathways in cancer, Regulation of actin cytoskeleton

**Product images:**

Gel: 12%SDS-PAGE

Lysate: 40 µg

Lane: RAW264.7 cell lysate

Primary antibody: [TA322119] (FGF8 Antibody) at dilution 1/400

Secondary antibody: Goat anti rabbit IgG at 1/5000 dilution

Exposure time: 5 minutes