

Product datasheet for **TA322118**

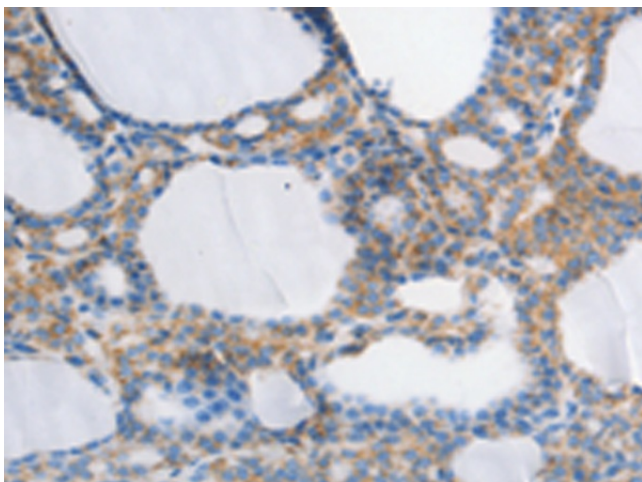
MUC13 Rabbit Polyclonal Antibody

Product data:

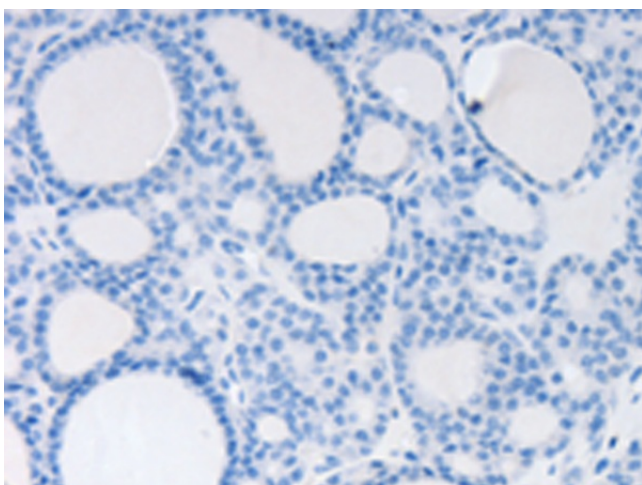
Product Type:	Primary Antibodies
Applications:	IHC
Recommended Dilution:	IHC: 25-100 Positive control: Human thyroid cancer Predicted cell location: Cytoplasm
Reactivity:	Human
Host:	Rabbit
Isotype:	IgG
Clonality:	Polyclonal
Immunogen:	Synthetic peptide corresponding to a region derived from 500-512 amino acids of human mucin 13, cell surface associated
Formulation:	PBS pH7.3, 0.05% NaN ₃ , 50% glycerol
Concentration:	lot specific
Purification:	Antigen affinity purification
Conjugation:	Unconjugated
Storage:	Store at -20°C as received.
Stability:	Stable for 12 months from date of receipt.
Gene Name:	mucin 13, cell surface associated
Database Link:	NP_149038 Entrez Gene 56667 Human Q9H3R2
Background:	Epithelial mucins; such as MUC13; are a family of secreted and cell surface glycoproteins expressed by ductal and glandular epithelial tissues (
Synonyms:	DRCC1; MUC-13
Protein Families:	Transmembrane



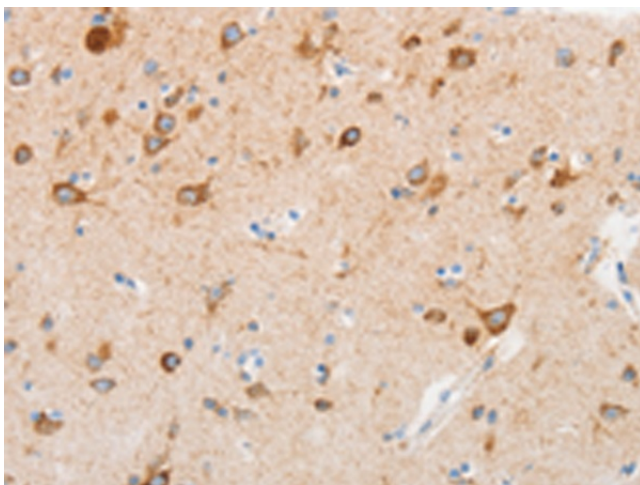
[View online »](#)

Product images:

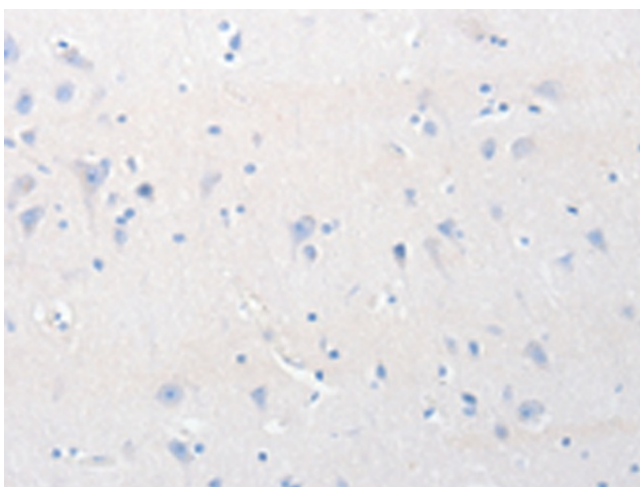
Immunohistochemistry of paraffin-embedded Human thyroid cancer tissue using TA322118 (MUC13 Antibody) at dilution 1/30 (Original magnification: $\times 200$)



Immunohistochemistry of paraffin-embedded Human thyroid cancer tissue using TA322118 (MUC13 Antibody) at dilution 1/30, treated with synthetic peptide. (Original magnification: $\times 200$)



Immunohistochemistry of paraffin-embedded Human brain tissue using TA322118 (MUC13 Antibody) at dilution 1/30 (Original magnification: ×200)



Immunohistochemistry of paraffin-embedded Human brain tissue using TA322118 (MUC13 Antibody) at dilution 1/30, treated with synthetic peptide. (Original magnification: ×200)