

## Product datasheet for **TA322117**

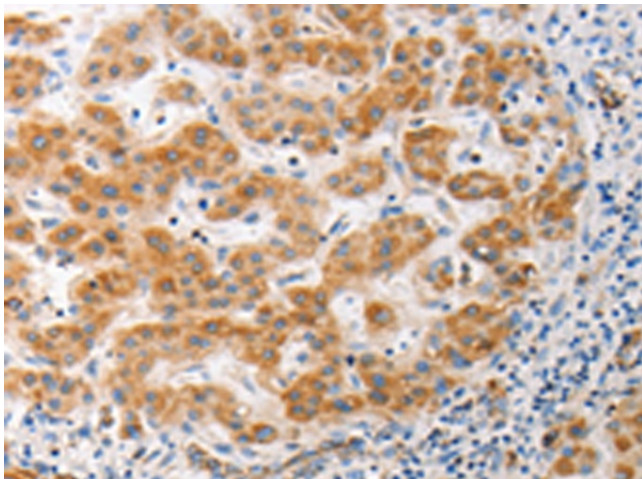
### MUC13 Rabbit Polyclonal Antibody

#### Product data:

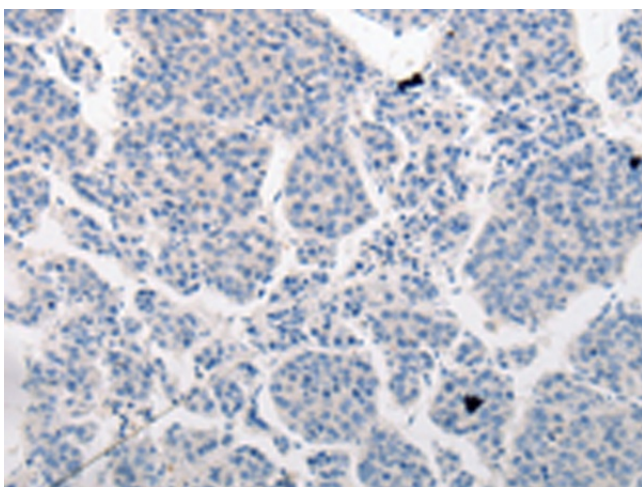
Product Type:	Primary Antibodies
Applications:	IHC
Recommended Dilution:	IHC: 15-50 Positive control: Human liver cancer Predicted cell location: Cytoplasm
Reactivity:	Human
Host:	Rabbit
Isotype:	IgG
Clonality:	Polyclonal
Immunogen:	Synthetic peptide corresponding to a region derived from 500-512 amino acids of human mucin 13, cell surface associated
Formulation:	PBS pH7.3, 0.05% NaN <sub>3</sub> , 50% glycerol
Concentration:	lot specific
Purification:	Antigen affinity purification
Conjugation:	Unconjugated
Storage:	Store at -20°C as received.
Stability:	Stable for 12 months from date of receipt.
Gene Name:	mucin 13, cell surface associated
Database Link:	<a href="#">NP_149038</a> <a href="#">Entrez Gene 56667 Human</a> <a href="#">Q9H3R2</a>
Background:	Epithelial mucins; such as MUC13; are a family of secreted and cell surface glycoproteins expressed by ductal and glandular epithelial tissues (
Synonyms:	DRCC1; MUC-13
Protein Families:	Transmembrane



[View online »](#)

**Product images:**

Immunohistochemistry of paraffin-embedded Human liver cancer tissue using TA322117 (MUC13 Antibody) at dilution 1/15 (Original magnification:  $\times 200$ )



Immunohistochemistry of paraffin-embedded Human liver cancer tissue using TA322117 (MUC13 Antibody) at dilution 1/15, treated with synthetic peptide. (Original magnification:  $\times 200$ )