

Product datasheet for **TA322115**

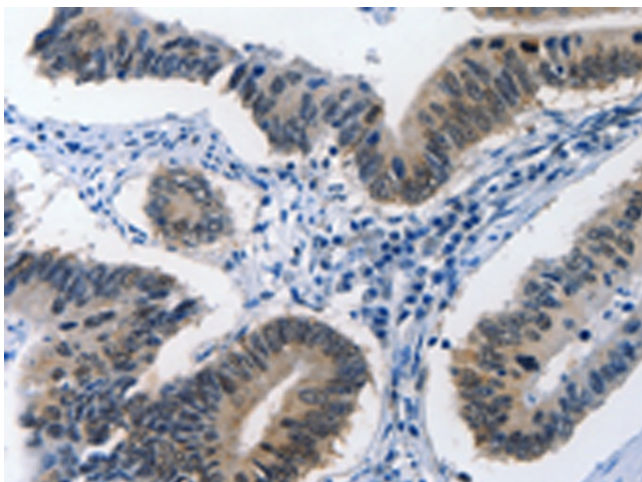
C20orf114 (BPIFB1) Rabbit Polyclonal Antibody

Product data:

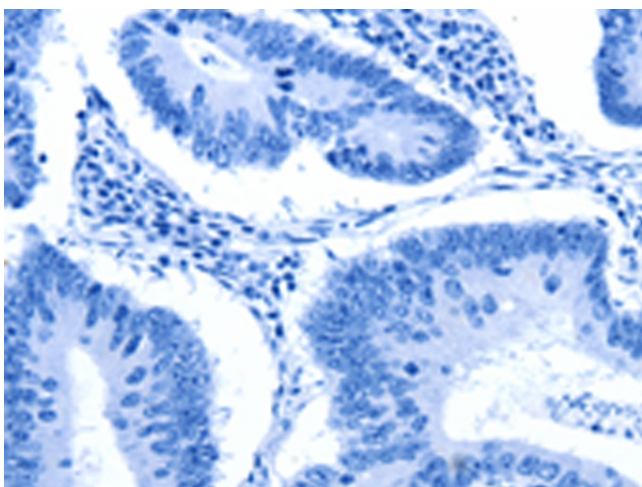
| | |
|------------------------------|---|
| Product Type: | Primary Antibodies |
| Applications: | IHC |
| Recommended Dilution: | IHC: 25-100 Positive control: Human colon cancer Predicted cell location: Cytoplasm, Nucleus |
| Reactivity: | Human |
| Host: | Rabbit |
| Isotype: | IgG |
| Clonality: | Polyclonal |
| Immunogen: | Synthetic peptide corresponding to a region derived from 140-153 amino acids of Human BPI fold containing family B, member 1 |
| Formulation: | PBS pH7.3, 0.05% NaN ₃ , 50% glycerol |
| Concentration: | lot specific |
| Purification: | Antigen affinity purification |
| Conjugation: | Unconjugated |
| Storage: | Store at -20°C as received. |
| Stability: | Stable for 12 months from date of receipt. |
| Gene Name: | BPI fold containing family B member 1 |
| Database Link: | NP_149974 Entrez Gene 92747 Human Q8TDL5 |
| Background: | The protein encoded by this gene may be involved in the innate immune response to bacterial exposure in the mouth; nasal cavities; and lungs. The encoded protein is secreted and is a member of the BPI/LBP/PLUNC protein superfamily. This gene is found with other members of the superfamily in a cluster on chromosome 20. |
| Synonyms: | C20orf114; LPLUNC1 |
| Protein Families: | Druggable Genome, Secreted Protein, Transmembrane |



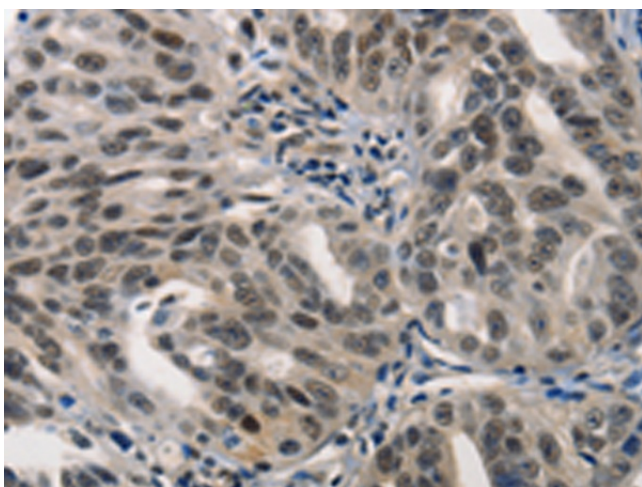
[View online »](#)

Product images:

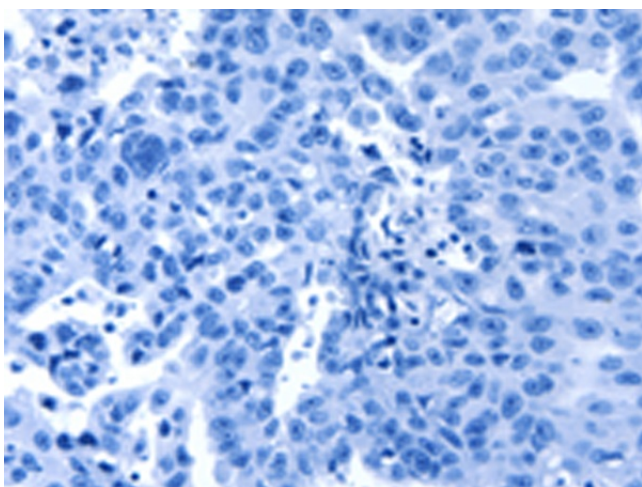
Immunohistochemistry of paraffin-embedded Human colon cancer tissue using TA322115 (BPIFB1 Antibody) at dilution 1/40 (Original magnification: $\times 200$)



Immunohistochemistry of paraffin-embedded Human colon cancer tissue using TA322115 (BPIFB1 Antibody) at dilution 1/40, treated with synthetic peptide. (Original magnification: $\times 200$)



Immunohistochemistry of paraffin-embedded Human ovarian cancer tissue using TA322115 (BPIFB1 Antibody) at dilution 1/40 (Original magnification: $\times 200$)



Immunohistochemistry of paraffin-embedded Human ovarian cancer tissue using TA322115 (BPIFB1 Antibody) at dilution 1/40, treated with synthetic peptide. (Original magnification: $\times 200$)