

## Product datasheet for **TA322114**

### ABCC12 Rabbit Polyclonal Antibody

#### Product data:

Product Type:	Primary Antibodies
Applications:	IHC
Recommended Dilution:	IHC: 15-50 Positive control: Human thyroid cancer Predicted cell location: Cytoplasm
Reactivity:	Human, Mouse, Rat
Host:	Rabbit
Isotype:	IgG
Clonality:	Polyclonal
Immunogen:	Synthetic peptide corresponding to a region derived from 11-25 amino acids of human ATP-binding cassette, sub-family C (CFTR/MRP), member 12
Formulation:	PBS pH7.3, 0.05% NaN <sub>3</sub> , 50% glycerol
Concentration:	lot specific
Purification:	Antigen affinity purification
Conjugation:	Unconjugated
Storage:	Store at -20°C as received.
Stability:	Stable for 12 months from date of receipt.
Gene Name:	ATP binding cassette subfamily C member 12
Database Link:	<a href="#">NP_150229</a> <a href="#">Entrez Gene 244562 Mouse</a> <a href="#">Entrez Gene 291923 Rat</a> <a href="#">Entrez Gene 94160 Human</a> <a href="#">Q96J65</a>

**Background:** This gene is a member of the superfamily of ATP-binding cassette (ABC) transporters and the encoded protein contains two ATP-binding domains and 12 transmembrane regions. ABC proteins transport various molecules across extra- and intracellular membranes. ABC genes are divided into seven distinct subfamilies: ABC1; MDR/TAP; MRP; ALD; OABP; GCN20; and White. This gene is a member of the MRP subfamily which is involved in multi-drug resistance. This gene and another subfamily member are arranged head-to-tail on chromosome 16q12.1. Increased expression of this gene is associated with breast cancer.



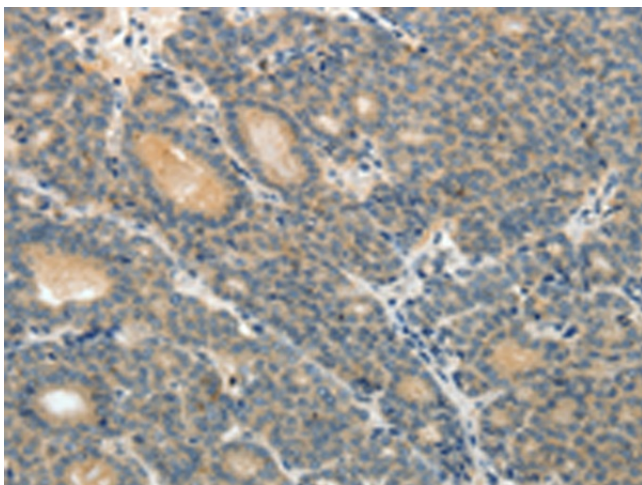
[View online »](#)

Synonyms: MRP9

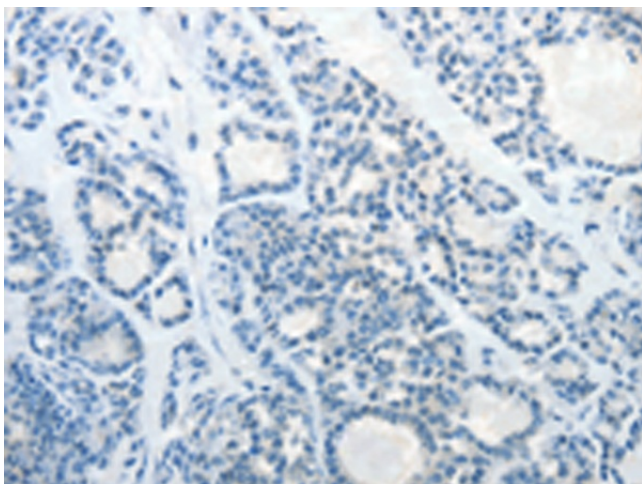
Protein Families: Druggable Genome, Transmembrane

Protein Pathways: ABC transporters

### Product images:



Immunohistochemistry of paraffin-embedded Human thyroid cancer tissue using TA322114 (ABCC12 Antibody) at dilution 1/10 (Original magnification:  $\times 200$ )



Immunohistochemistry of paraffin-embedded Human thyroid cancer tissue using TA322114 (ABCC12 Antibody) at dilution 1/10, treated with synthetic peptide. (Original magnification:  $\times 200$ )