

Product datasheet for **TA322113**

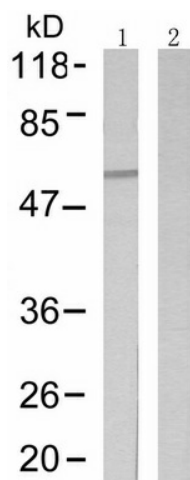
CAMK2N2 Rabbit Polyclonal Antibody

Product data:

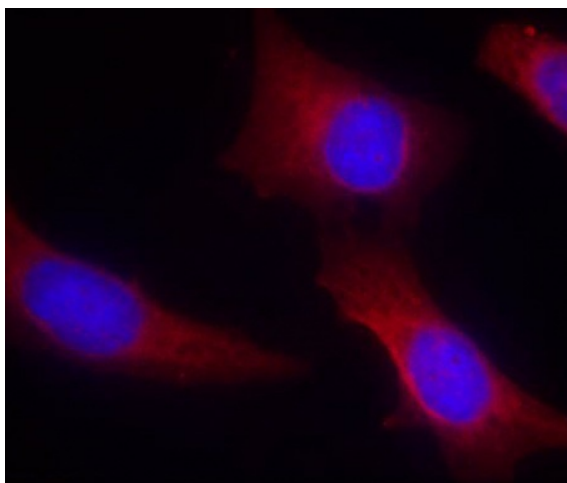
Product Type:	Primary Antibodies
Applications:	IF, WB
Recommended Dilution:	WB: 1:500-1000, IF: 1:100-200
Reactivity:	Human, Mouse, Rat
Host:	Rabbit
Isotype:	IgG
Clonality:	Polyclonal
Immunogen:	Peptide sequence around aa.284~288 (Q-E-T-V-D) derived from Human CaMKII.
Formulation:	PBS pH7.3, 0.05% NaN ₃ , 50% glycerol
Concentration:	lot specific
Purification:	Antigen affinity purification
Conjugation:	Unconjugated
Storage:	Store at -20°C as received.
Stability:	Stable for 12 months from date of receipt.
Predicted Protein Size:	54 kDa
Gene Name:	calcium/calmodulin dependent protein kinase II inhibitor 2
Database Link:	NP_150284 Entrez Gene 59314 Rat Entrez Gene 73047 Mouse Entrez Gene 94032 Human Q96S95
Background:	CaM-kinase II (CAMK2) is a prominent kinase in the central nervous system that may function in long-term potentiation and neurotransmitter release. Member of the NMDAR signaling complex in excitatory synapses it may regulate NMDAR-dependent potentiation of the AMPAR and synaptic plasticity
Synonyms:	CAM-KIIN; CAMKIIN



[View online »](#)

Product images:

Predicted band size: 54 kDa. Positive control: Hela cells lysate. Recommended dilution: 1/ 500-1000. (Gel: 10%SDS-PAGE Lane 1: Hela cells lysate Lane 2: Treated with the peptide Lysates: 30 ug per lane Primary antibody: 1/500 dilution Secondary antibody: Goat anti Rabbit IgG - H&L (HRP) at 1/10000 dilution Exposure time: 1 minute)



Predicted cell location: Cytoplasm. Positive control: Human hippocampal region tissue from the falling sickness disease. Recommended dilution: 1/ 100-200. The image is immunofluorescence of methanol-fixed Human hippocampal region tissue from the falling sickness disease using CAMK2N2 antibody at dilution 1/100. (Original magnification: ×200)