

## Product datasheet for **TA322110S**

### Profilin 2 (PFN2) Rabbit Polyclonal Antibody

#### Product data:

Product Type:	Primary Antibodies
Applications:	IHC, WB
Recommended Dilution:	WB: 500-2000 WB positive control: Human fetal brain tissue IHC: 25-100 Positive control: Human brain Predicted cell location: Cytoplasm
Reactivity:	Human, Mouse, Rat
Host:	Rabbit
Isotype:	IgG
Clonality:	Polyclonal
Immunogen:	Synthetic peptide corresponding to a region derived from 128-140 amino acids of Human profilin 2
Formulation:	PBS pH7.3, 0.05% NaN <sub>3</sub> , 50% glycerol
Purification:	Antigen affinity purification
Conjugation:	Unconjugated
Storage:	Store at -20°C as received.
Stability:	Stable for 12 months from date of receipt.
Predicted Protein Size:	15 kDa
Gene Name:	profilin 2
Database Link:	<a href="#">NP_444252</a> <a href="#">Entrez Gene 18645 MouseEntrez Gene 81531 RatEntrez Gene 5217 Human P35080</a>



[View online »](#)

**Background:**

The protein encoded by this gene is a ubiquitous actin monomer-binding protein belonging to the profilin family. It is thought to regulate actin polymerization in response to extracellular signals. There are two alternatively spliced transcript variants encoding different isoforms described for this gene. Binds to actin and affects the structure of the cytoskeleton. At high concentrations; profilin prevents the polymerization of actin; whereas it enhances it at low concentrations. By binding to PIP2; it inhibits the formation of IP3 and DG.

**Synonyms:**

D3S1319E; PFL

**Protein Families:**

Druggable Genome

**Protein Pathways:**

Regulation of actin cytoskeleton

**Product images:**

Gel: 10%SDS-PAGE

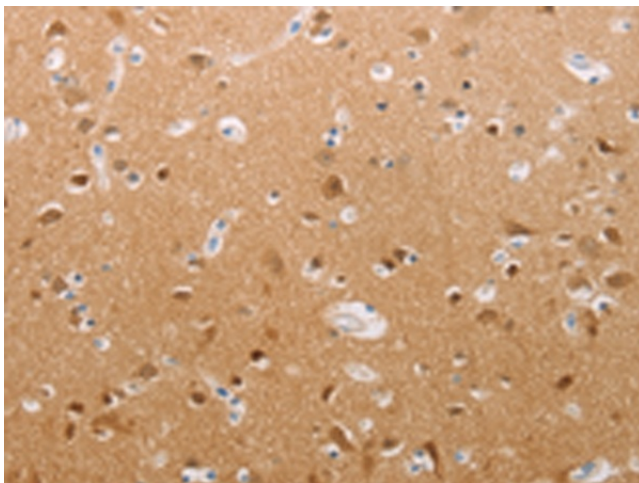
Lysate: 40 µg

Lane: Human fetal brain tissue

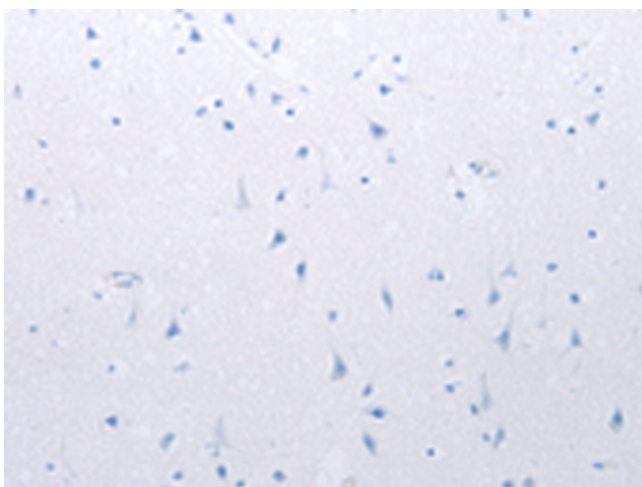
Primary antibody: [TA322110] (PFN2 Antibody) at dilution 1/450

Secondary antibody: Goat anti rabbit IgG at 1/8000 dilution

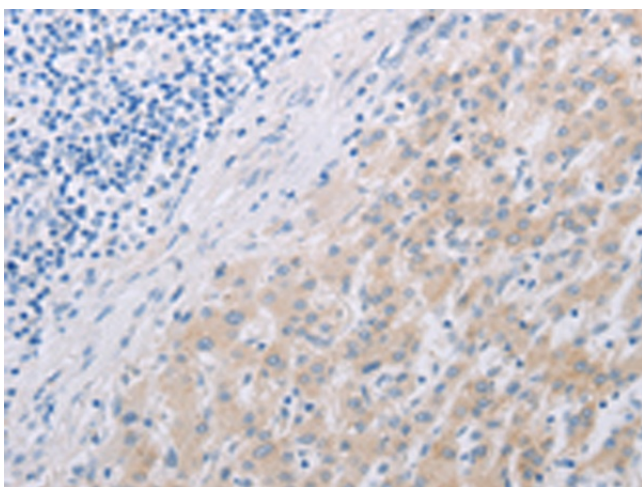
Exposure time: 3 minutes



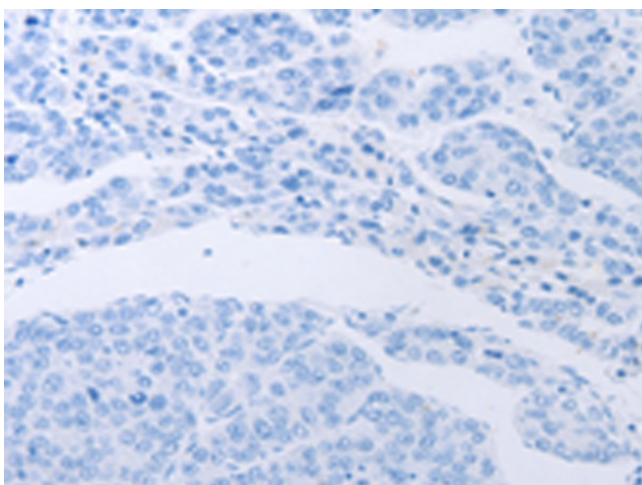
Immunohistochemistry of paraffin-embedded Human brain tissue using [TA322110] (PFN2 Antibody) at dilution 1/30 (Original magnification: ×200)



Immunohistochemistry of paraffin-embedded Human brain tissue using [TA322110] (PFN2 Antibody) at dilution 1/30, treated with synthetic peptide. (Original magnification:  $\times 200$ )



Immunohistochemistry of paraffin-embedded Human liver cancer tissue using [TA322110] (PFN2 Antibody) at dilution 1/30 (Original magnification:  $\times 200$ )



Immunohistochemistry of paraffin-embedded Human liver cancer tissue using [TA322110] (PFN2 Antibody) at dilution 1/30, treated with synthetic peptide. (Original magnification:  $\times 200$ )