

Product datasheet for **TA322109**

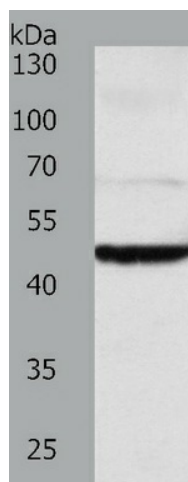
TEKT1 Rabbit Polyclonal Antibody

Product data:

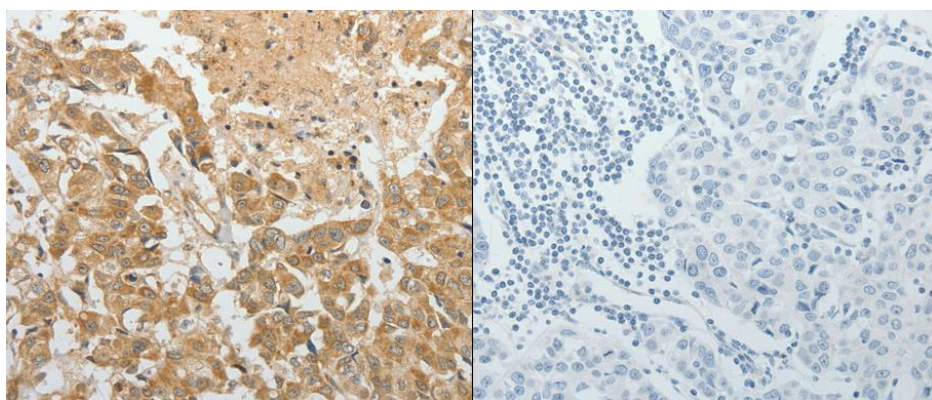
| | |
|-------------------------|---|
| Product Type: | Primary Antibodies |
| Applications: | IHC, WB |
| Recommended Dilution: | ELISA: 1:1000-2000, WB: 1:200-1000, IHC: 1:25-100 |
| Reactivity: | Human, Mouse, Rat |
| Host: | Rabbit |
| Isotype: | IgG |
| Clonality: | Polyclonal |
| Immunogen: | Fusion protein corresponding to C terminal 300 amino acids of human tektin 1 |
| Formulation: | PBS pH7.3, 0.05% NaN ₃ , 50% glycerol |
| Concentration: | lot specific |
| Purification: | Antigen affinity purification |
| Conjugation: | Unconjugated |
| Storage: | Store at -20°C as received. |
| Stability: | Stable for 12 months from date of receipt. |
| Predicted Protein Size: | 48 kDa |
| Gene Name: | tektin 1 |
| Database Link: | NP_444515 Entrez Gene 21689 MouseEntrez Gene 85270 RatEntrez Gene 83659 Human Q969V4 |
| Background: | This gene product belongs to the tektin family of proteins. Tektins comprise a family of filament-forming proteins that are coassembled with tubulins to form ciliary and flagellar microtubules. This gene is predominantly expressed in the testis and in mouse; tektin 1 mRNA was localized to the spermatocytes and round spermatids in the seminiferous tubules; indicating that it may play a role in spermatogenesis.? |
| Synonyms: | tektin 1 |



[View online »](#)

Product images:

Predicted band size: 48 kDa. Positive control: Mouse brain tissue lysate. Recommended dilution: 1/200-1000. (Gel: 10%SDS-PAGE Lysate: 40 ug per lane Primary antibody: 1/500 dilution Secondary antibody: Goat anti Rabbit IgG - H&L (HRP) at 1/10000 dilution Exposure time: 10 minutes)



Predicted cell location: Cytoplasm. Positive control: Human breast cancer tissue. Recommended dilution: 1/25-100 The image on the left is immunohistochemistry of paraffin-embedded human breast cancer tissue using TEKT1 antibody at dilution 1/30, on the right is treated with the fusion protein. (Original magnification:x200)