

## Product datasheet for **TA322108**

### TEKT1 Rabbit Polyclonal Antibody

#### Product data:

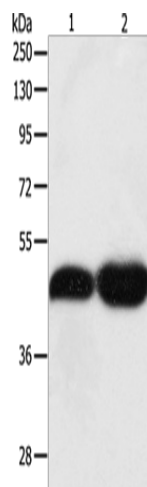
Product Type:	Primary Antibodies
Applications:	IHC, WB
Recommended Dilution:	WB: 500-2000 WB positive control: NIH/3T3 and Lncap cells IHC: 50-200 Positive control: Human lymphoma Predicted cell location: Cytoplasm
Reactivity:	Human, Mouse, Rat
Host:	Rabbit
Isotype:	IgG
Clonality:	Polyclonal
Immunogen:	Fusion protein corresponding to C terminal 300 amino acids of human tektin 1
Formulation:	PBS pH7.3, 0.05% NaN <sub>3</sub> , 50% glycerol
Concentration:	lot specific
Purification:	Antigen affinity purification
Conjugation:	Unconjugated
Storage:	Store at -20°C as received.
Stability:	Stable for 12 months from date of receipt.
Predicted Protein Size:	48 kDa
Gene Name:	tektin 1
Database Link:	<a href="#">NP_444515</a> <a href="#">Entrez Gene 21689 Mouse</a> <a href="#">Entrez Gene 85270 Rat</a> <a href="#">Entrez Gene 83659 Human</a> <a href="#">Q969V4</a>
Background:	This gene product belongs to the tektin family of proteins. Tektins comprise a family of filament-forming proteins that are coassembled with tubulins to form ciliary and flagellar microtubules. This gene is predominantly expressed in the testis and in mouse; tektin 1 mRNA was localized to the spermatocytes and round spermatids in the seminiferous tubules; indicating that it may play a role in spermatogenesis.?



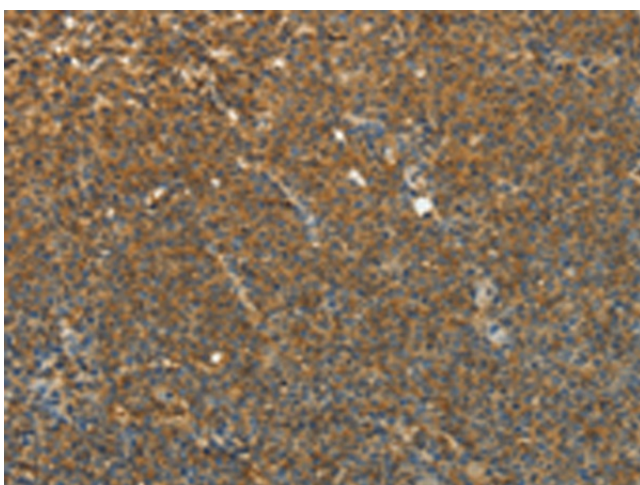
[View online »](#)

Synonyms: tektin 1

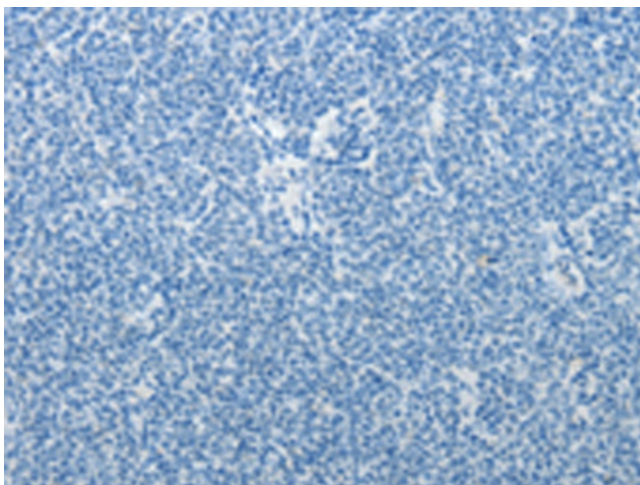
### Product images:



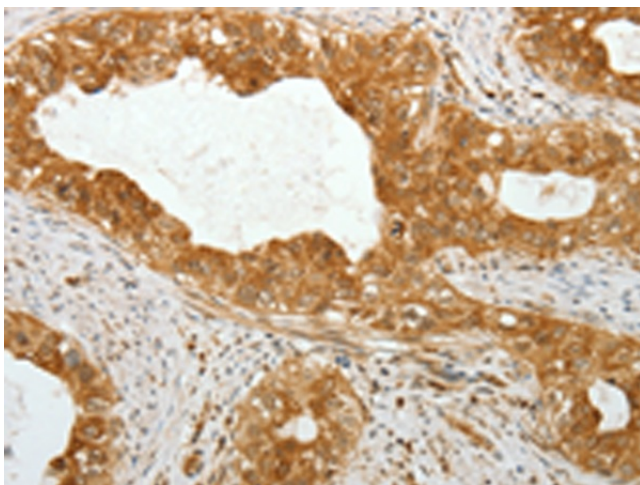
Gel: 10%SDS-PAGE  
Lysate: 40  $\mu$ g  
Lane 1-2: NIH/3T3 cells  
Lncap cells  
Primary antibody: TA322108 (TEKT1 Antibody) at dilution 1/500  
Secondary antibody: Goat anti rabbit IgG at 1/8000 dilution  
Exposure time: 10 minutes



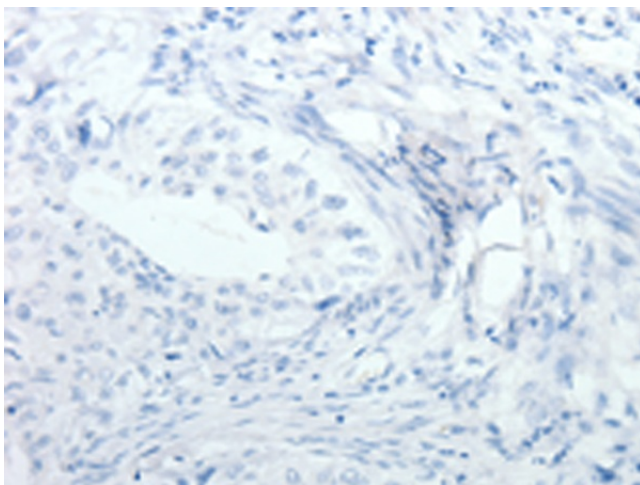
Immunohistochemistry of paraffin-embedded Human lymphoma tissue using TA322108 (TEKT1 Antibody) at dilution 1/30 (Original magnification:  $\times$ 200)



Immunohistochemistry of paraffin-embedded Human lymphoma tissue using TA322108 (TEKT1 Antibody) at dilution 1/30, treated with fusion protein. (Original magnification:  $\times 200$ )



Immunohistochemistry of paraffin-embedded Human cervical cancer tissue using TA322108 (TEKT1 Antibody) at dilution 1/30 (Original magnification:  $\times 200$ )



Immunohistochemistry of paraffin-embedded Human cervical cancer tissue using TA322108 (TEKT1 Antibody) at dilution 1/30, treated with fusion protein. (Original magnification:  $\times 200$ )