

Product datasheet for **TA322105**

CLEC4D Rabbit Polyclonal Antibody

Product data:

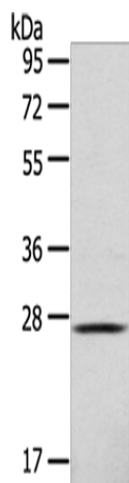
Product Type:	Primary Antibodies
Applications:	WB
Recommended Dilution:	WB: 500-2000 WB positive control: 293T cells
Reactivity:	Human
Host:	Rabbit
Isotype:	IgG
Clonality:	Polyclonal
Immunogen:	Fusion protein corresponding to a region derived from 39-215 amino acids of human C-type lectin domain family 4, member D
Formulation:	PBS pH7.3, 0.05% NaN ₃ , 50% glycerol
Concentration:	lot specific
Purification:	Antigen affinity purification
Conjugation:	Unconjugated
Storage:	Store at -20°C as received.
Stability:	Stable for 12 months from date of receipt.
Predicted Protein Size:	25 kDa
Gene Name:	C-type lectin domain family 4 member D
Database Link:	NP_525126 Entrez Gene 338339 Human Q8WXI8
Background:	This gene encodes a member of the C-type lectin/C-type lectin-like domain (CTL/CTLD) superfamily. Members of this family share a common protein fold and have diverse functions; such as cell adhesion; cell-cell signalling; glycoprotein turnover; and roles in inflammation and immune response. This gene is closely linked to other CTL/CTLD superfamily members on chromosome 12p13 in the natural killer gene complex region.
Synonyms:	CD368; CLEC-6; CLEC6; CLECSF8; MCL; MPCL



[View online »](#)

Protein Families: Druggable Genome, Transmembrane

Product images:



Gel: 10%SDS-PAGE
Lysate: 40 μ g
Lane: 293T cells
Primary antibody: TA322105 (CLEC4D Antibody)
at dilution 1/123
Secondary antibody: Goat anti rabbit IgG at
1/8000 dilution
Exposure time: 1 minute