

Product datasheet for **TA322100**

SLC32A1 Rabbit Polyclonal Antibody

Product data:

Product Type:	Primary Antibodies
Applications:	IHC, WB
Recommended Dilution:	WB: 500-2000 WB positive control: Mouse eyes tissue IHC: 50-200 Positive control: Human colon cancer Predicted cell location: Cytoplasm
Reactivity:	Human, Mouse, Rat
Host:	Rabbit
Isotype:	IgG
Clonality:	Polyclonal
Immunogen:	Synthetic peptide corresponding to a region derived from 63-76 amino acids of human solute carrier family 32 (GABA vesicular transporter), member 1
Formulation:	PBS pH7.3, 0.05% NaN ₃ , 50% glycerol
Concentration:	lot specific
Purification:	Antigen affinity purification
Conjugation:	Unconjugated
Storage:	Store at -20°C as received.
Stability:	Stable for 12 months from date of receipt.
Predicted Protein Size:	57 kDa
Gene Name:	solute carrier family 32 member 1
Database Link:	NP_542119 Entrez Gene 22348 Mouse Entrez Gene 83612 Rat Entrez Gene 140679 Human Q9H598
Background:	Vesicular inhibitory amino acid transporter is a protein that in humans is encoded by the SLC32A1 gene. The protein encoded by this gene is an integral membrane protein involved in gamma-aminobutyric acid (GABA) and glycine uptake into synaptic vesicles. The encoded protein is a member of amino acid/polyamine transporter family II.



[View online »](#)

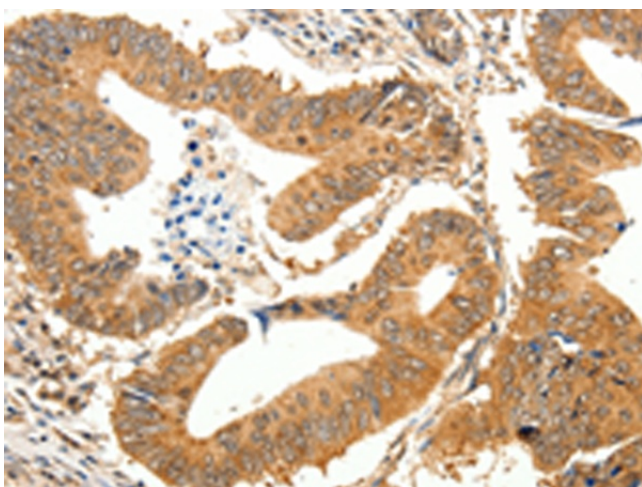
Synonyms: VGAT; VIAAT

Protein Families: Transmembrane

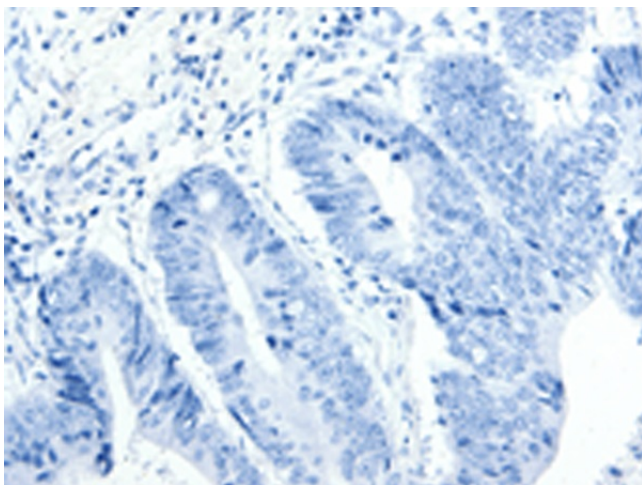
Product images:



Gel: 10%SDS-PAGE
Lysate: 40 µg
Lane: Mouse eyes tissue
Primary antibody: TA322100 (SLC32A1 Antibody) at dilution 1/500
Secondary antibody: Goat anti rabbit IgG at 1/8000 dilution
Exposure time: 20 seconds



Immunohistochemistry of paraffin-embedded Human colon cancer tissue using TA322100 (SLC32A1 Antibody) at dilution 1/35 (Original magnification: ×200)



Immunohistochemistry of paraffin-embedded Human colon cancer tissue using TA322100 (SLC32A1 Antibody) at dilution 1/35, treated with synthetic peptide. (Original magnification: ×200)